

**AGENDA of the
Portfolio Committee : Protection Services
1 November 2022
(Also the agenda for the Mayoral Committee Meeting : 16 November 2022)**

**5.
OVERSTRAND FESTIVE SEASON PLAN FOR FIRE & EMERGENCY SERVICES,
DISASTER MANAGEMENT AND SECURITY SERVICES**

17/8/B

NJ Michaels

Director: Protection Services

16 September 2022

(028) 313 8054

1. Executive Summary

The purpose of this report is to take note of the Festive Season Plan for Overstrand Fire & Emergency Services, Disaster Management and Security Services department.

2. Service Delivery and Budget Implementation Plan - IGNITE

Directorate: Protection Services
Fire & Emergency Services, Disaster Management and Security Services

3. Compliance with Strategic Priorities

Provision of democratic, accountable and ethical governance
Provision and maintenance of municipal services
Creation and maintenance of a safe and healthy environment

4. Delegated Authority

Executive Mayor

5. Legal Requirements

Constitution of the Republic of South Africa, 1996
SANS 10090: Community Protection Against Fires
Fire Brigade Services Act, No 99 of 1987
Community Fire Safety By-law, P.N 6454/2007
By-laws of the Overstrand Municipality
Service Delivery and Budget Implementation Plan (SDBIP)

6. Background/Discussion/Evaluation/Conclusion

Background

For 2019/20 the estimated population for Overstrand Municipality was between 104 748 – 04985 (own calculation based on the average growth rate from 2001 – 2011 census figures). During festivals and festive seasons, the influx of

**AGENDA of the
Portfolio Committee : Protection Services
1 November 2022
(Also the agenda for the Mayoral Committee Meeting : 16 November 2022)**

visitors can increase the population with up to 50%. During these festivals and festive seasons, the jurisdiction is at its busiest.

Discussion

The Festive Season Plan highlights the operational readiness and response during the festive season, between 3 December 2022 and 8 January 2023. The aim of the festive season plan is to identify, reduce or prevent incidents from happening and soften the impacts of those incidents that are inevitable.

7. Financial Implications

In accordance with budget provision.

8. Staff Implications

None

9. Comments from other Departments, Divisions and Administrations

None

10. Annexures

Annexure A: Fire & Emergency Services, Disaster Management and Security Services Festive Season Plan 2022/23

RECOMMENDATION :

that the Overstrand Fire & Emergency Services, Disaster Management and Security Services Festive Season Plan 2022/23 **be noted**.

RESPONSIBLE OFFICIAL :

**NJ MICHAELS
L SMITH**

TARGET DATE FOR IMPLEMENTATION :

30 NOVEMBER 2022

**AGENDA of the
Portfolio Committee: Protection Services
1 November 2022
(Also the agenda for the Mayoral Committee Meeting: 16 November 2022)**

**5.
OVERSTRAND FESTIVE SEASON PLAN FOR FIRE & EMERGENCY SERVICES,
DISASTER MANAGEMENT AND SECURITY SERVICES**

17/8/B

NJ Michaels

Director: Protection Services

16 September 2022

(028) 313 8054

**THIS MATTER SERVED BEFORE THE PROTECTION SERVICES PORTFOLIO
COMMITTEE ON 1 NOVEMBER 2022, WHICH COMMITTEE SUPPORTED THE
RECOMMENDATION**

RESPONSIBLE OFFICIAL :

**NJ MICHAELS
L SMITH**

TARGET DATE FOR IMPLEMENTATION :

30 NOVEMBER 2022



FESTIVE SEASON PLAN

2022 - 2023



Overstrand Fire & Emergency Services, Disaster Management and Security Services Festive Season Plan

L. Smith
Senior Manager

Contents

1. PURPOSE.....	2
2. AIM.....	2
3. OBJECTIVES.....	2
4. DEFINITIONS.....	2
5. OVERSTRAND FIRE & EMERGENCY SERVICES ORGANOGRAM.....	3
6. OVERSTRAND FIRE & EMERGENCY SERVICES FLEET	12
7. SWOT ANALYSIS	14
8. HERMANUS, KLEINMOND & GANSBAAI FIRE STATIONS	15
9. SAFETY AND SECURITY AND CCTV	16
10. DISASTER MANAGEMENT	17
11. FIRE SAFETY	17
12. INCIDENT COMMAND AND EMERGENCY CONTROL.....	18
13. SENIOR DUTY OFFICER.....	18
14. CALL OUT PROCEDURES	21
15. FESTIVE SEASON MITIGATION STRATEGY	22
16. POSSIBLE FUNDING IMPLICATIONS & DEVIATION FROM NORMAL SUPPLY CHAIN PROCEDURE DURING EMERGENCIES	23

1. PURPOSE

The purpose of this strategy is to focus on the management of potential emergency threats.

2. AIM

To identify, reduce or prevent incidents from happening and soften the impact of those incidents that are inevitable.

3. OBJECTIVES

To improve emergency incidents from happening and soften the impact of those incidents that are inevitable.

4. DEFINITIONS

Disaster: means a progressive or sudden, widespread or localized, natural or human-caused occurrence which

a) Causes or threatens to cause

- i. Death, injury or disease;
- ii. Damage to property, infrastructure or the environment or;
- iii. Disruption to the life of a community; and

b) Is of a magnitude that exceeds the ability of those affected by the disaster to cope with its effects using only their own resources(refer to disaster management)

Disaster Management: means a continuous and integrated multi-sectoral, multi-disciplinary process of planning and implementation of measures aimed at:

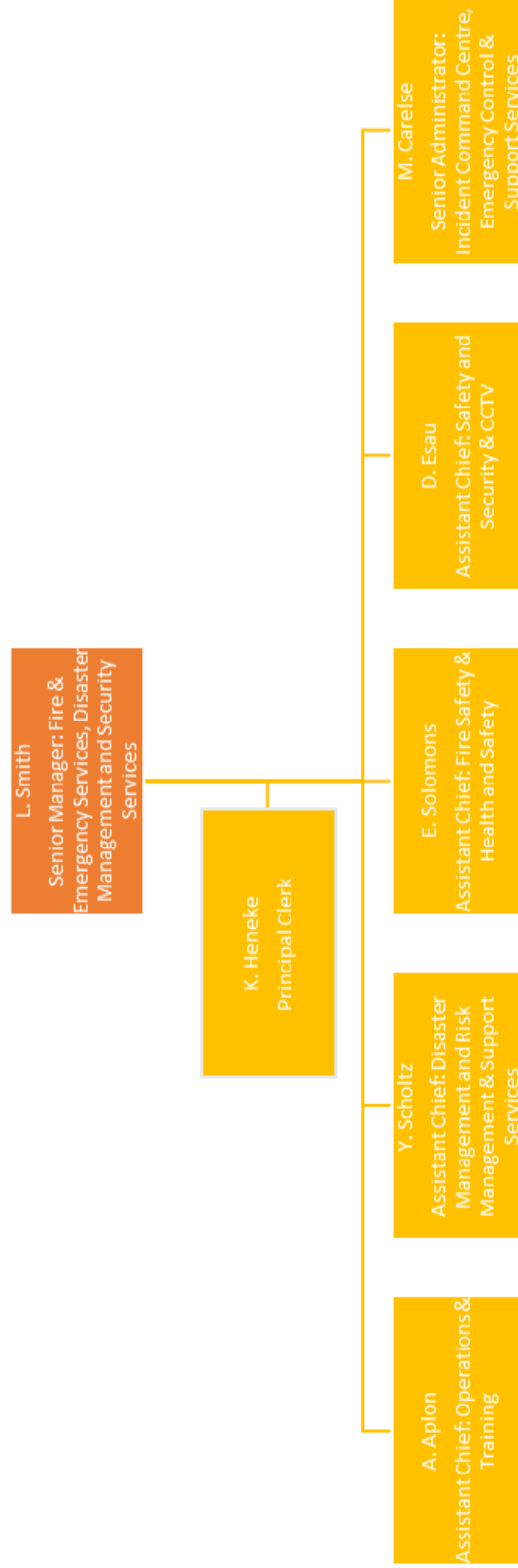
- a) Preventing or reducing the risk of disasters;
- b) Mitigating the severity or consequences of disasters;
- c) Emergency preparedness;
- d) A rapid and effective response to disasters, and
- e) Post-disaster recovery and rehabilitation.

Major Incident: means when an emergency requires additional or external resources to bring the situation (**emergency**) under control. Activation of these resources is done by the Chief Fire Officer or Incident Commander after approval is granted by the Director or MIM (Municipal Manager)

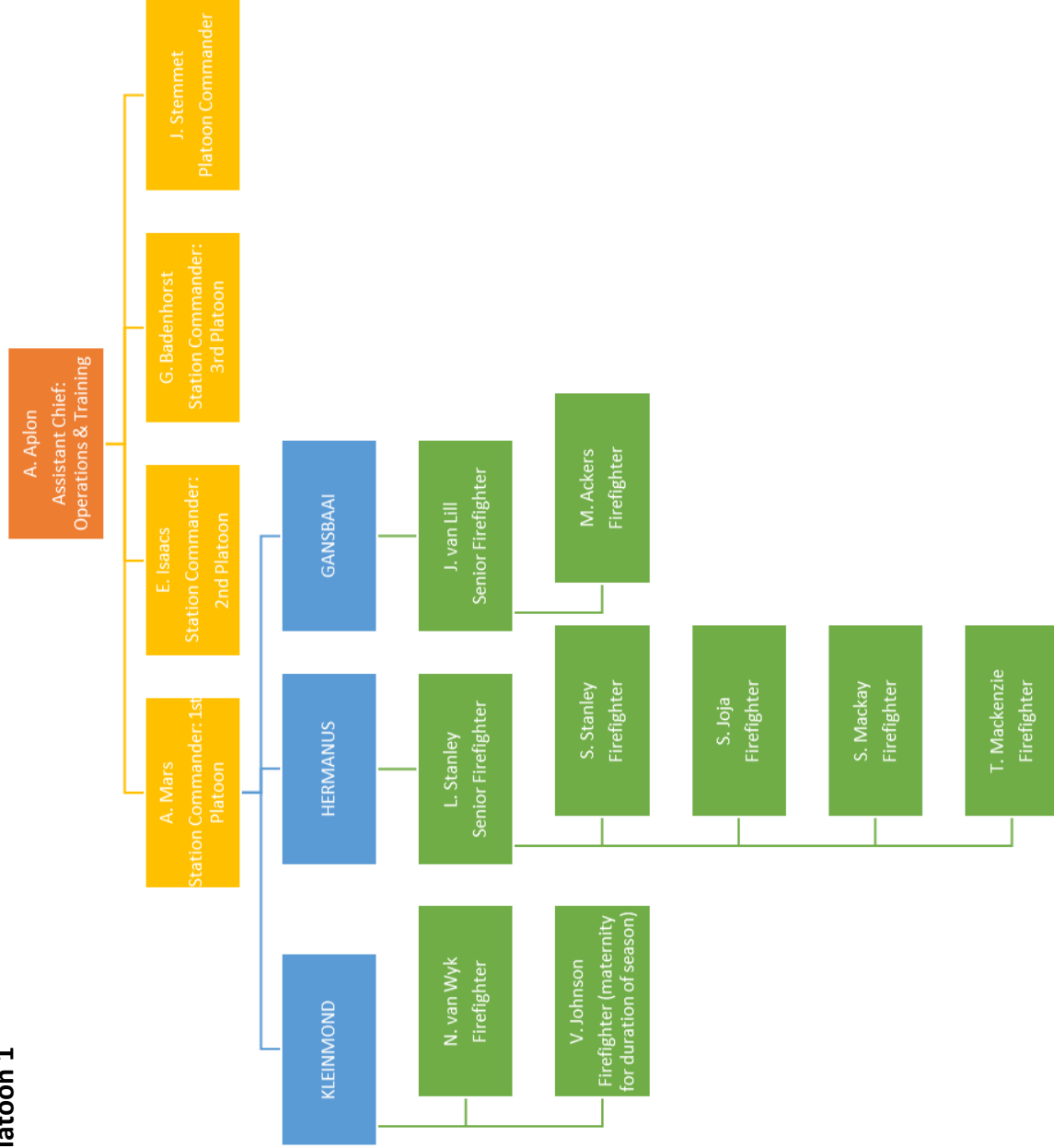
Emergency: means situation that poses an immediate risk to life, health, property or the environment and normal procurement procedures cannot be followed.

5. OVERSTRAND FIRE & EMERGENCY SERVICES ORGANOGRAM

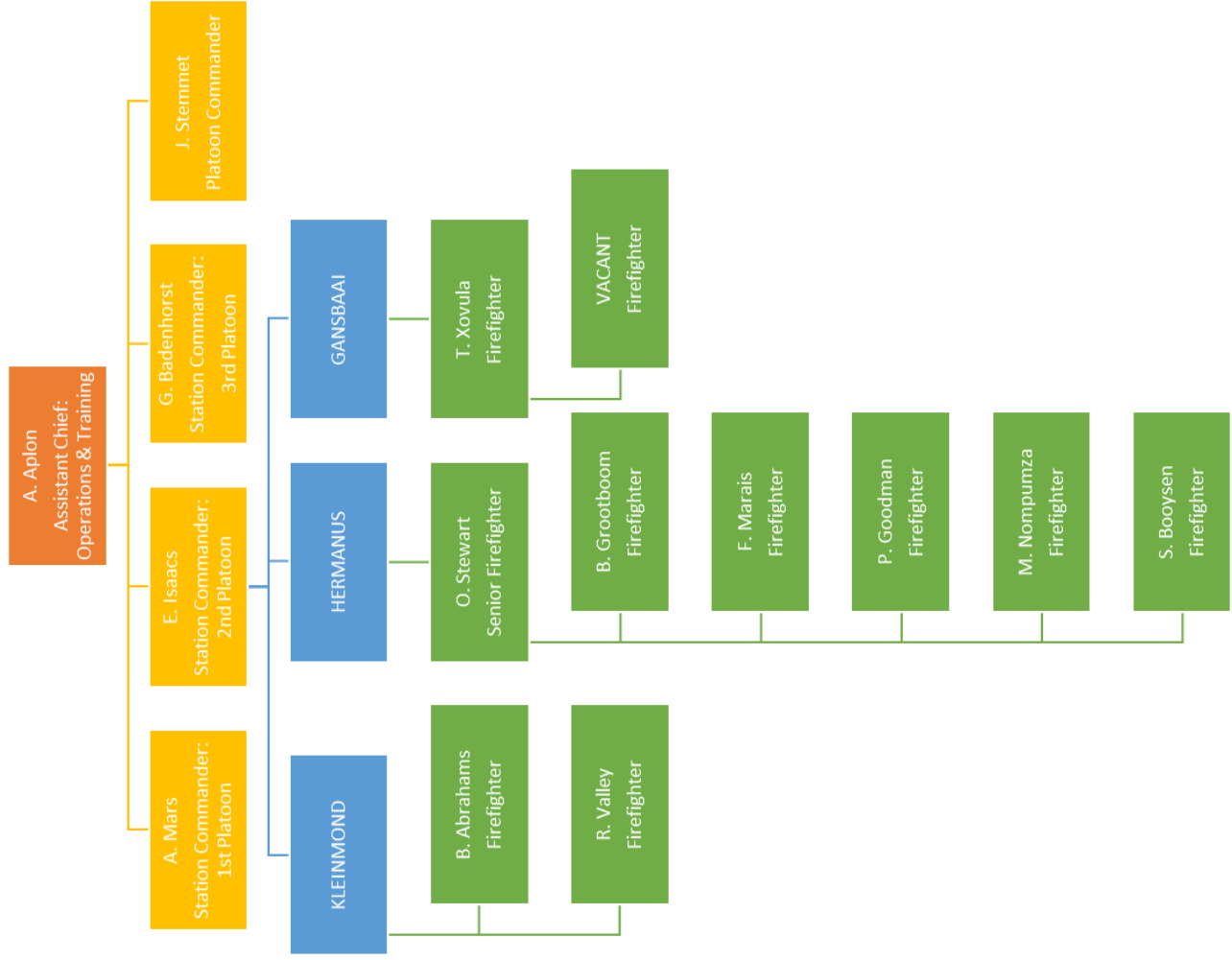
5.1. Top Management Team



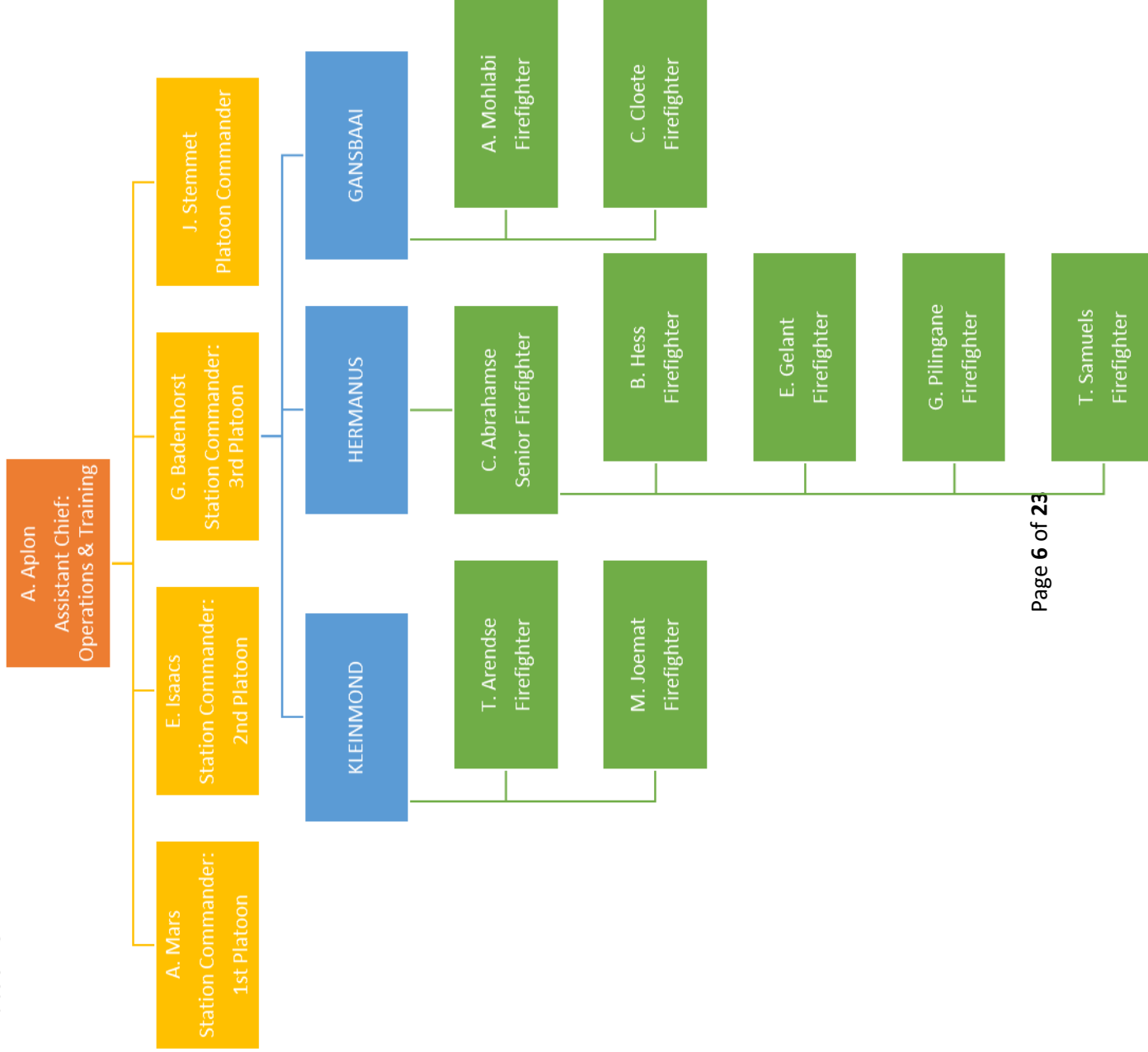
5.2. Operations: Platoon 1



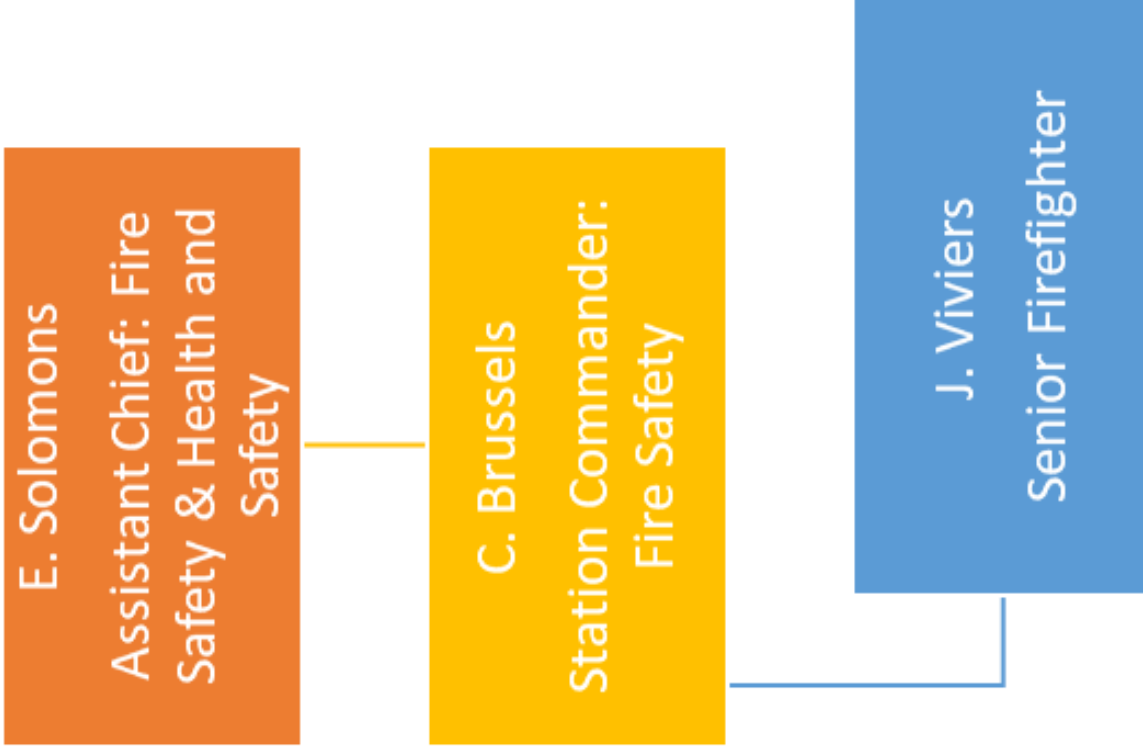
5.3. Operations : Platoon 2



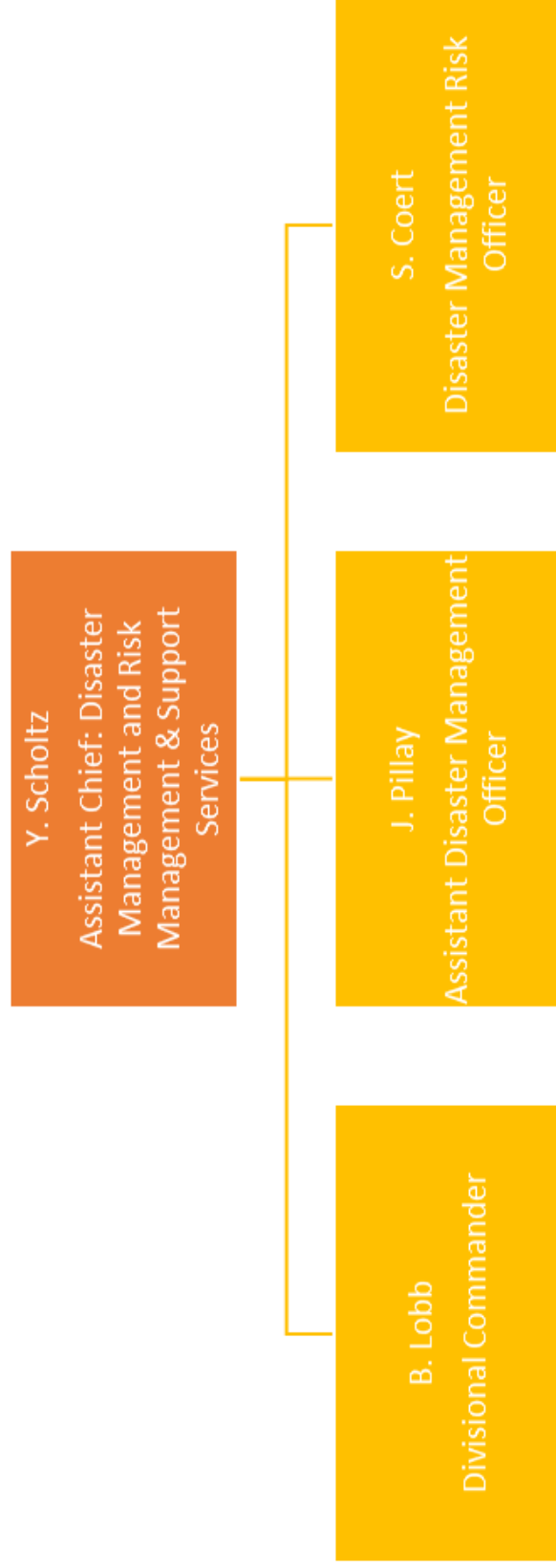
5.4. Operations : Platoon 3



5.5. Fire Safety

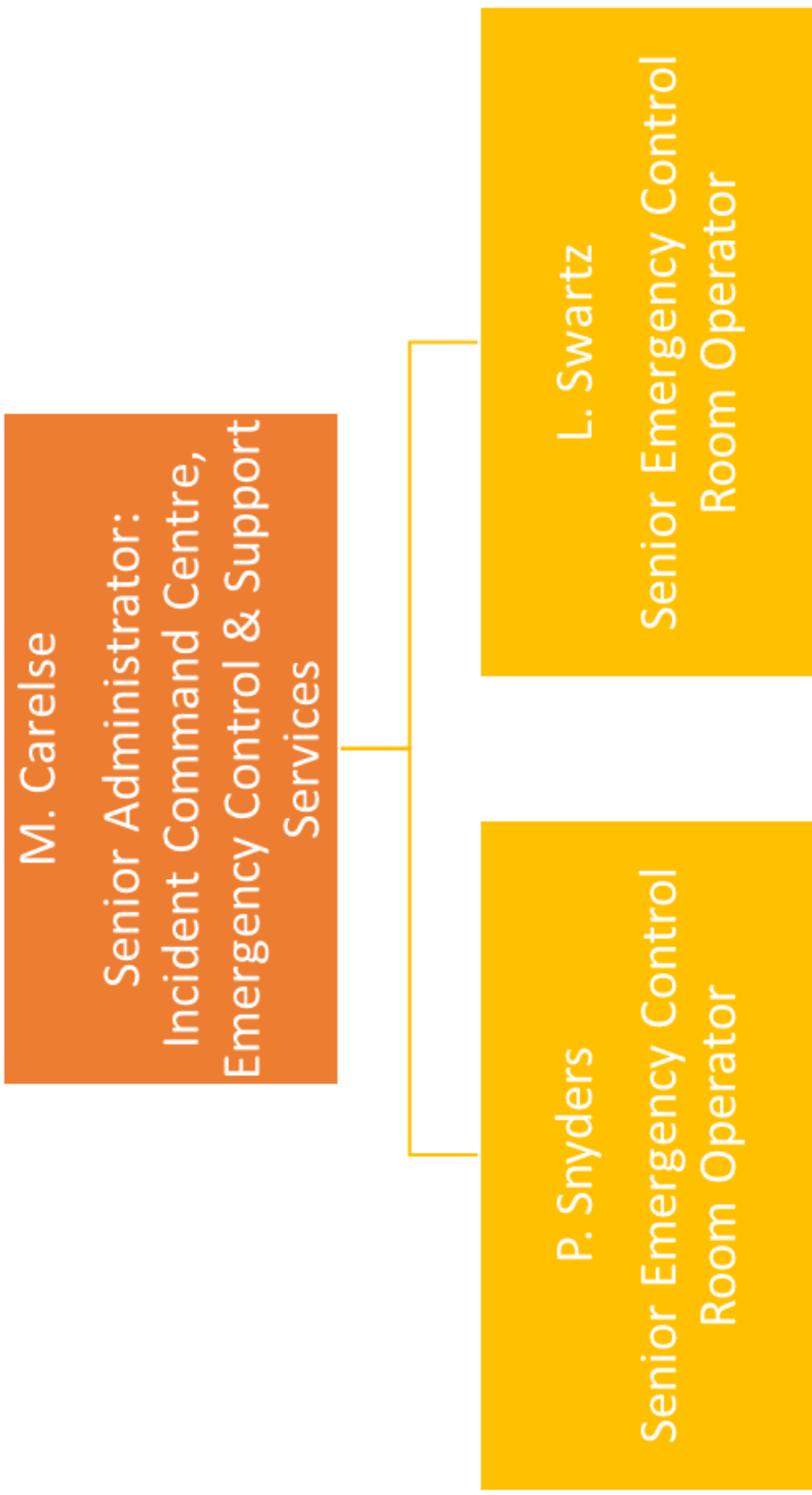


5.6. Disaster Management

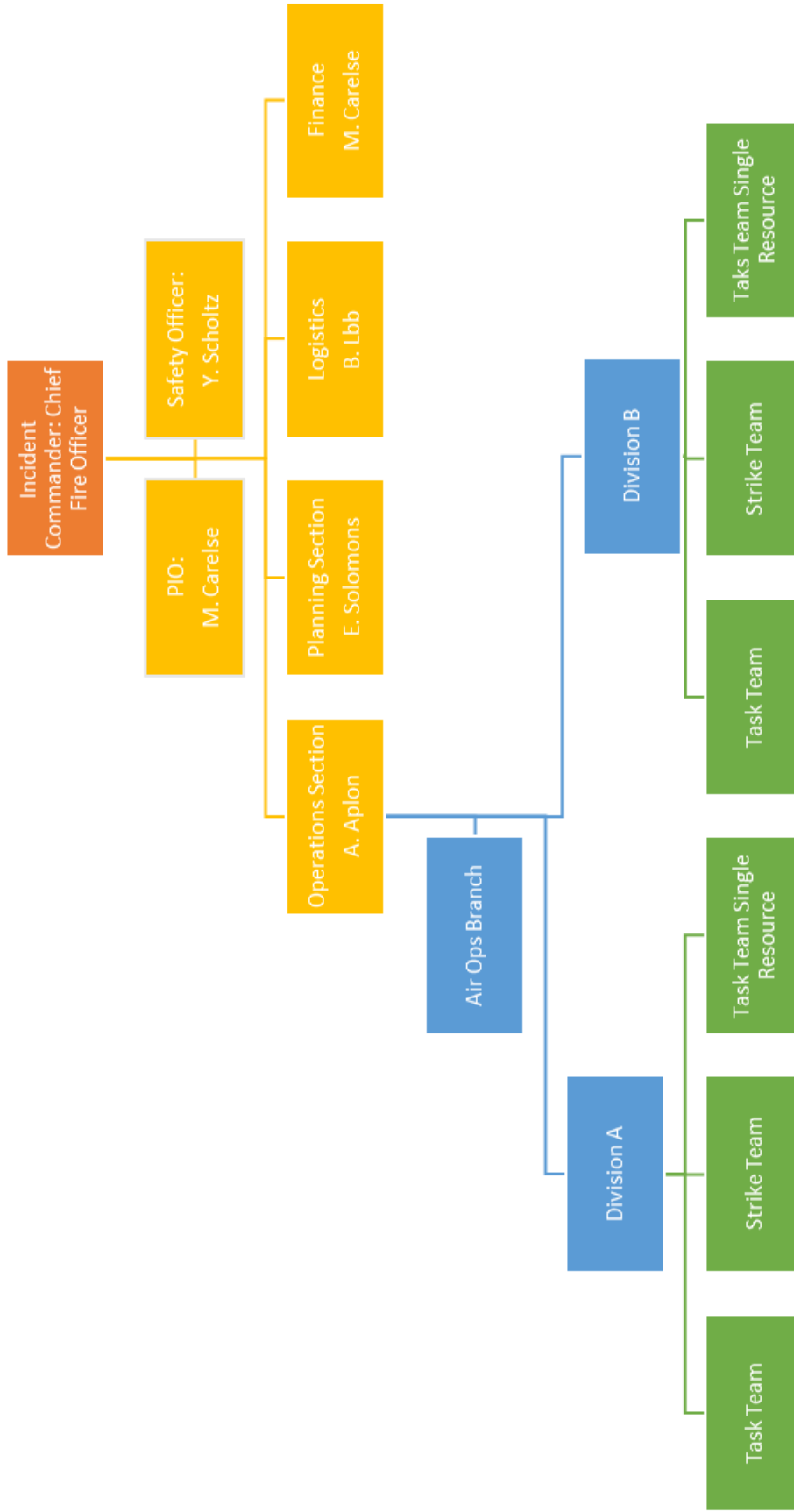




5.8. Incident Command, Emergency Control & Support Services



5.9. Proposed Incident Command Structure



6. OVERSTRAND FIRE & EMERGENCY SERVICES FLEET

CALL SIGN	REG NUMBER	STATUS	LOCATION	DESCRIPTION	CLASS	Model Year
COMMAND VEHICLES						
Delta 1	CEM 23400	On run	Hermanus	Nissan Navara 2.5 TD LWB 4X4	Mobile Command Vehicle – Disaster Management	2015
CV 1	CEM 44444	On run	Hermanus	Ford Ranger DC 4X4	Mobile Command Vehicle	2018
MAJOR PUMPERS						
Engine 1-1	CEM 37463	On run	Hermanus	Mercedes Benz Ateco 1328	Major Pumper type I	2014
Engine 2-1	CEM 7532	On run	Gansbaai	Iveco (4X4)	Major Pumper type III	2019
Engine 3-1	CEM 10226	On run	Kleinmond	Mercedes Benz Ateco 1328	Major Pumper type III	2009
PUMPERS						
Pump 1	CEM 30714	On run	Hermanus	Toyota Hino 4X4	All Terrain Appliance	2018
Pump 2	CEM 48495	On run	Gansbaai	Isuzu FTS 750	All Terrain Appliance	2019
Pump 3	CEM 2869	On run	Gansbaai	Tata 713C 4X4	All Terrain Appliance	2006
Pump 5		On run	Hermanus	Isuzu FTS 750	All Terrain Appliance	2019
Pump 6	CEM 1626	On run	Pringle Bay	Mercedes Buffel	All Terrain Appliance	1982
Pump 7	CEM 21426	On run	Kleinmond	Isuzu FTS 750	All Terrain Appliance	2019
SKID UNITS						
Alpha 1	CEM 44284	On run	Hermanus	Toyota Landcruiser	Skid Unit	2018
Alpha 2	CEM 32828	On run	Stanford	Toyota Landcruiser	Skid Unit	2011
Alpha 3	CEM 28939	On run	Kleinmond/ Pringlebay	Toyota Landcruiser	Skid Unit	2019
Alpha 4	CEM 12594	On-run	Gansbaai	Ford Ranger Subercab 2.2 4x4	Skid Unit	2020
Alpha 7	CEM 6556	On-run	Kleinmond	Ford Ranger Supercab 2.2 4x4	Skid unit	2020
SUPPORT VEHICLES						
SV01	CEM 38652	On run	Hermanus	Volkswagen Polo Vivo 1.4	Support Vehicle	2015

SV02	CEM 47688	On run	Control Room	Volkswagen Sedan	Polo	Support Vehicle	2019
SV03	CEM 42054	On run	Kleinmond	Nissan NP 300		Utility Vehicle	2017
SV04	CEM 30870	On Run	Hermanus	Ford Ranger Cab	Single	Utility Vehicle	2019
SV05	CEM 8219	On run	Fire Safety	Ford Ranger XL 4x2 DC	4x2	Support Vehicle	2021
SV06	CAM 13012	On run	Bettiesbay	Nissan Hardbody 4x2 1-ton LDV	2.0	Bakkie Unit	2007
SV07	CEM 42270	On run	Control Room	VW POLO SEDSN		Utility Vehicle	
SV08	CEM 11565	On run	Hermanus	Ford Ranger XL 4x2 DC	4x2	Utility Vehicle	2021
SV09	CEM 13116	On run	Safe & Security	Ford Ranger XL 4x2 DC	4x2	Utility Vehicle	2021
SV10	CEM 33893	On run	Safety & Security	VW POLO SEDAN		Utility Vehicle	
	CEM 14938	On run		Toyota Hilux 2.7i 4x4		Utility Vehicle	2006
	CEM 23784	On run		Nissan NP300 4X4	Hardbody	Utility Vehicle	2011
TRAILERS							
Tango 1	CAM 4600		Kleinmond	Trailer – Rope Rescue			
Tango 2	CAM 4601		Gansbaai	Trailer – Hazmat			
Tango 3	CAM 1266		Gansbaai	Trailer – Portable dam			
Tango 4	CEM 3366		Betty's bay	Trailer- Skid unit			
Tango 5	CEM 25651		Baardskeerdersbos	Trailer -Skid Unit			
Tango 6	CAM 30979		Hermanus	Trailer – SCBA compressor			
NB: Senior Officers must utilize marked municipal vehicles with the necessary radio communication for Command and Control of incidents during major incidents, marked vehicles must also be utilized when communicating with ground resources and aerial support. Municipal or marked vehicles are easily identifiable to the general public. Due to the nature of our inherent fire risk and history of fire related incidents, incident commanders must use municipal vehicles to communicate with other agencies, e.g. WOF, ODM, SAPS, WCEMS etc.							

7. SWOT ANALYSIS

Weakness	Strengths	Threats
<ul style="list-style-type: none"> Limited Infrastructure Limited Vehicles (vehicles taken out of service) Condition of Vehicles (mechanical failure) Limited Equipment Condition of Equipment (deteriorating equipment) Limited Personnel (Man Power) One turn out per shift Limited Trained Personnel Level of Training Gansbaai and Kleinmond limited shift system Limited Funding 	<ul style="list-style-type: none"> Dynamic Leadership In the process of addressing Infrastructure, Vehicles, Personnel, Training Strong Organizational Structure Comm and Structure (ICS Principles) Disciplined Fire Fighters 24/7 Available Fire, Rescue and Disaster Management Service Hermanus Fire Station Shift System All available Fire Engines will be place at strategic point during New Year's eve celebration and in Mid and Post season from 3 December 202 until 9 January 2023 - at Pringle Bay, Rooi Els, Betty's Bay, Kleinmond Main beaches, - Grotto Beach, Fisherhaven , Municipal Stores and the Pools at Hawston , as well as - Uitenkraalsmond, Stanfordsbaai, Franskraal and Pearly Beach with staff compliment. 	<p>Fires</p> <ul style="list-style-type: none"> Structural (Formal, Informal, Commercial, Industrial) Veld Fires <p>Motor vehicle/ pedestrian accidents</p> <p>Boating accidents (Sea/Lagoon)</p> <p>Para-glider accidents</p> <p>Hiking accidents</p> <p>Drowning accidents (sea, lagoon, swimming pools, rivers)</p> <p>Threat Drivers</p> <p>Influx of visitors, tourists .</p> <p>Weather (dry, windy, high temp), Topography (limited access) and Vegetation (age/density/type ect)</p> <p>Extended Fire Season</p> <p>Multiple incidents of Extended Fire Rescue and Disaster Incidents</p>
<p>Opportunities</p> <ul style="list-style-type: none"> Each veld fire incident provides an opportunity to reduce fuel (vegetation) Festive season period offers a unique opportunity to apply skills and gain experience in the fire, rescue and disaster management environment Opportunity to Create an Safe Environment for Communities, Visitors and Tourists 		

8. HERMANUS, KLEINMOND & GANSBAAI FIRE STATIONS

Hermanus, Kleinmond and Gansbaai Fire Stations are currently operating on a 24-hour basis, with shifts commencing at 09:00. The 24-hour shifts came into effect as from 1 July 2022. Each shift consists of at least the following staffing complement:

KLEINMOND	HERMANUS	GANSBAAI
	1x Station Commander	
	1x Senior Firefighter	1x Senior Firefighter
2x Firefighter	4x Firefighter	2x Firefighter
2x EPWP	5x EPWP	2x EPWP

- 8.1. Fire Operations will be augmented during office hours by a Platoon Commander and one EPWP for technical incident support.
- 8.2. Off-duty staff will be on a rotational standby roster, at any given time with at least four additional firefighters on standby per day.
- 8.3. Four reservist Firefighters will also be on duty on a rotational roster.
- 8.4. Seventeen Community Volunteers will be available in Betty's Bay and Pringle Bay.
- 8.5. A Brigade Call out can be instructed for all off-duty firefighters .
- 8.6. All available fire engines will be placed at strategic points during the festive season and New Year's Eve celebrations from 3 December 2022 until 8 January 2023.
- 8.7. The 24-hour roster shift for Operations and Training is rostered on the CAD (Computer Aided Dispatch)

9. SAFETY AND SECURITY AND CCTV

- 9.1. As the division only consists of 2 (two) permanent officials, the day to day operations are conducted by temporary staff (EPWP and Chrysalis interns). All temporary staff report to the Senior Inspector: Law Enforcement and CCTV.
- 9.2. Safety and Security and CCTV consist of the Public Safety Officer, CCTV Controller and Access Controller. Public Safety Officers will rotate as per the strategic points identified during the festive season and New year's Eve celebrations from 3 December 2022 until 8 January 2023.
- 9.3. The Public Safety Officers will assist the Fire division at incidents by assisting with crowd control and logistical arrangements. The Public Safety Officers will assist the Law Enforcement division with any operational grid plans as needed and conduct regular inspections at municipal sites, issue fines to transgressors enforcement of municipal by-laws.
- 9.4. A motivation will be submitted to the Director: Protection Services as and when the need arise to bring in additional temporary staff on overtime.
- 9.5. Public Safety Officers and CCTV Controllers are currently operating on a 24-hour basis, with shifts commencing at 06:00, this shift came into effect as from 1 July 2022. Access Controllers operate as per the norm according to day workers (Monday – Friday 07:45 till 16:30, excluding public holidays).
- 9.6. The 24-hour / 12-hour roster for Safety and Security is rostered on the CAD (Computer Aided Dispatch)
- 9.7. Refer to the Senior Duty Roster for standby officials (permanent).

10. DISASTER MANAGEMENT

- 10.1. Disaster Management operates as per the norm according to day workers (Monday – Friday 07:45 till 16:30, excluding public holidays).
- 10.2. Disaster Management officers will be activated to assist at extended wildfire attacks, structural fires (specifically backyard and informal dwellings), severe weather warnings and social distress incidents, amongst other.
- 10.3. A motivation will be submitted to the Director: Protection Services as and when the need arise to bring in temporary staff on overtime.
- 10.4. Refer to the Senior Duty Roster for standby officials (permanent)

11. FIRE SAFETY

- 11.1. Fire Safety operates as per the norm according to day workers (Monday – Friday 07:45 till 16:30, excluding public holidays).
- 11.2. Fire Safety officers will be activated to assist at extended attacks, may be called to assist at structural fires (specifically backyard and informal dwellings), severe weather warnings and social distress, amongst other.
- 11.3. Fire Safety officers may particularly be activated after hours to assist Law Enforcement Agencies with compliance at liquor establishments such as bars and taverns (both legal and illegal), and any other establishment as deemed to have the need for fire safety compliance.
- 11.4. A motivation will be submitted to the Director: Protection Services as and when the need arise to bring in temporary staff on overtime.
- 11.5. Refer to the Senior Duty Roster for standby officials (permanent).

12. INCIDENT COMMAND AND EMERGENCY CONTROL

- 12.1. The division only consists of 3 (three) permanent officials, the day to day operations are conducted by temporary staff (EPWP and a Chrysalis Intern). All temporary staff report to the Senior Administrator: Incident Command Centre, Emergency Control & Support Services.
- 12.2. The Emergency Control Room receives all calls for the Directorate: Protection Services and transfers to the relevant department or dispatches the necessary crew or officers.
- 12.3. The Emergency Control Room operates on a 24-hour basis, with 12-hour shifts commencing at 06:00.
- 12.4. A motivation will be submitted to the Director: Protection Services as and when the need arise to bring in temporary staff on overtime (operators can be utilized for the emergency control room or when there is an extended wildfire occurring as part of the logistics team)
- 12.5. The 12-hur roster for Incident Command and Emergency Control is rostered on the CAD (Computer Aided Dispatch)
- 12.6. Refer to the Senior Duty Roster for standby officials (permanent)

13. SENIOR DUTY OFFICER

Assistant Chief Fire Officer or his delegate will be available during office hours. A Senior Officer will be on standby after hours and on weekends. Refer to the shift roster from November 2022 – May 2023.

November 2022

Monday	Tuesday	Wednesday	Thursday	Friday	Saturday	Sunday
	1 Stewart, Scholtz, Solomons, Lobb, Joan, Pat	2 Stewart, Scholtz, Solomons, Lobb, Joan, Pat	3 Stewart, Scholtz, Solomons, Lobb, Joan, Pat	4 Stewart, Scholtz, Solomons, Lobb, Joan, Pat	5 Stewart, Scholtz, Solomons, Lobb, Joan, Pat	6 Stewart, Scholtz, Solomons, Lobb, Joan, Pat
7 Esau, Aplon, , Brussel, Coert, Smith, Stemmet, Lucia	8 Esau, Aplon, Carelse, Brussel, Coert, Smith Stemmet, Lucia	9 Esau, Aplon, Carelse, Brussel, Coert, Smith Stemmet, Lucia	10 Esau, Aplon, Carelse, Brussel, Coert, Smith Stemmet, Lucia	11 Esau, Aplon, Carelse, Brussel, Coert, Smith Stemmet, Lucia	12 Esau, Aplon, Carelse, Brussel, Coert, Smith Stemmet, Lucia	13 Esau, Aplon, Carelse, Brussel, Coert, Smith Stemmet, Lucia
14 Stewart, Scholtz, Solomons, Heneke, Joan, Pat	15 Stewart, Scholtz, Solomons, Heneke, Joan, Pat	16 Stewart, Scholtz, Solomons, Heneke, Joan, Pat	17 Stewart, Scholtz, Solomons, Heneke, Joan, Pat	18 Stewart, Scholtz, Solomons, Heneke, Joan, Pat	19 Stewart, Scholtz, Solomons, Heneke, Joan, Pat	20 Stewart, Scholtz, Solomons, Heneke, Joan, Pat
21 Esau, Aplon, Carelse, Brussel, Coert, Lucia	22 Esau, Aplon, Carelse, Brussel, Coert, Lucia	23 Esau, Aplon, Carelse, Brussel, Coert, Lucia	24 Esau, Aplon, Carelse, , Brussel, Coert, Lucia	25 Esau, Aplon, Carelse, Brussel, Coert, Lucia	26 Esau, Aplon, Carelse, Brussel, Coert, Lucia	27 Esau, Aplon, Carelse, Brussel, Coert, Lucia
28 Stewart, Scholtz Solomons, Lobb Joan, Pat	29 Stewart, Scholtz Solomons, Lobb Joan, Pat	30 Stewart, Scholtz Solomons, Lobb Joan, Pat				

Events

December 2022

Monday	Tuesday	Wednesday	Thursday	Friday	Saturday	Sunday
			1 Stewart, Scholtz, Solomons, Lobb, Joan, Pat	2 Stewart, Scholtz, Solomons, Lobb, Joan, Pat	3 Stewart, Scholtz, Solomons, Lobb, Joan, Pat	4 Stewart, Scholtz, Solomons, Lobb, Joan, Pat
5 Esau, Aplon, Carelse, Brussel, Coert, Smith Stemmet, Lucia	6 Esau, Aplon, Carelse, Brussel, Coert, Smith Stemmet, Lucia	7 Esau, Aplon, Carelse, Brussel, Coert, Smith Stemmet, Lucia	8 Esau, Aplon, Carelse, Brussel, Coert, Smith Stemmet, Lucia	9 Esau, Aplon, Carelse, Brussel, Coert, Smith Stemmet, Lucia	10 Esau, Aplon, Carelse, Brussel, Coert, Smith Stemmet, Lucia	11 Esau, Aplon, Carelse, Brussel, Coert, Smith Stemmet, Lucia
12 Stewart, Scholtz, Solomons, Heneke, Joan, Pat	13 Stewart, Scholtz, Solomons, Heneke, Joan, Pat	14 Stewart, Scholtz, Solomons, Heneke, Joan, Pat	15 Stewart, Scholtz, Solomons, Heneke, Joan, Pat	16 Stewart, Scholtz, Solomons, Heneke, Joan, Pat	17 Stewart, Scholtz, Solomons, Heneke, Joan, Pat	18 Stewart, Scholtz, Solomons, Heneke, Joan, Pat
19 Esau, Aplon, Carelse, Brussel, Coert, Lucia	20 Esau, Aplon, Carelse, Brussel, Coert, Lucia	21 Esau, Aplon, Carelse, Brussel, Coert, Lucia	22 Esau, Aplon, Carelse, Brussel, Coert, Lucia	23 Esau, Aplon, Carelse, Brussel, Coert, Lucia	24 Esau, Aplon, Carelse, Brussel, Coert, Lucia	25 Esau, Aplon, Carelse, Brussel, Coert, Lucia
26 Stewart, Scholtz Solomons, Lobb Joan, Pat	27 Stewart, Scholtz Solomons, Lobb Joan, Pat	28 Stewart, Scholtz Solomons, Lobb Joan, Pat	29 Stewart, Scholtz Solomons, Lobb Joan, Pat	30 Stewart, Scholtz Solomons, Lobb Joan, Pat	31 Stewart, Scholtz Solomons, Lobb Joan, Pat	

Events

- 16 Day of Reconciliation
- 25 Christmas
- 26 Day of Goodwill

14. CALL OUT PROCEDURES

All calls will be handled and logged by the Hermanus Fire Station

Hermanus foxtrot responsible for call-taking



Activate crew



Inform Duty officer



Incident Commander must contact Duty Officer with eh following information:

Exact location – grid reference or GPS

Type of incident (size and severity)

Hazards – present and potential

Access to scene

Injuries/ Damages (Number and severity of casualties or structures (estimated))

Emergency and other services present and required



Duty officer must inform CFO, Director, MM etc

The following calls out procedure for additional resources are:

Air or ground Support request (on emergency) from Chief Fire Officer/ Incident Commander to Director Protection Services/ MM for approval or approval for over spending. On approval the chief Fire Officer /Incident Commander will contact district or provincial fire management to dispatch requested resources to location and manage these resources and keep Director/ MM informed.

All air and ground support after the necessary approval, resources can be requested via Bredasdorp dispatch.

Bredasdorp Dispatch	
Fire Line	082 312 9507/6040
Admin Line	028 425 1690/6040
E-Mail Address	bredispatch@odm.org.za

15. FESTIVE SEASON MITIGATION STRATEGY

- 24 hours a day firefighters will be ready to respond to any fire call
- Fresh crew will be available at least every 24-hours
- All available fire engines will be placed at strategic points during New Year’s Eve celebrations and mid and post season from 3 December 2022 until 8 January 2023.

16. POSSIBLE FUNDING IMPLICATIONS & DEVIATION FROM NORMAL SUPPLY CHAIN PROCEDURE DURING EMERGENCIES

- Additional shifts from 03 December 2022 until 8 January 2023 to man strategic points (16, 24, 25, 26, & 31 December 2022 and 01-02 January 2023)
- After hours/ weekend working for Fire resources (Western Cape Province)
- Additional overtime and standby for Senior officer and Firefighter (extended incidents)
- Food rations (extended incidents or on request of Chief Fire Office /Incident Commander)
- Transport for Working for Fire Personnel
- Additional logistical support from Overstrand municipal departments and or other external resources
- Fire suppressing Support (Aerial)