

*Public Participation document:*

**STANFORD**

Overstrand Heritage Landscape Group:

Nicolas Baumann, Sarah Winter, Melanie Attwell, Graham Jacobs,  
Harriet Deacon & Harriet Clift

Prepared for the

Overstrand Municipality

June 2009

### Site Description:

Stanford is located halfway between Hermanus and Gansbaai adjacent to the Klein Rivier and displays many of the characteristics and qualities of small Western Cape towns in terms of its structure and form, house street relationships and the relationship with its natural context. The town originates from an original grant of the town Klein Riviers Valey to Christoffel Brand by the British Government in 1801. Brand built the original farmhouse situated at 14 Church Street. Later changes in ownership included Major Samuel Parlby who built a small water mill for grinding wheat along a stream feeding the Klein Rivier from a spring on the farm. In 1838 the farm was sold to Robert Stanford who built a larger mill on the site. The first plots of the new village were auctioned in 1856 and incorporated the farmhouse and mill. The original village comprised 165 large erven of which 97 obtained the rights to use the water from the leiwater channels to grow vegetables, fruit and flowers. The water for the leiwater channels emanate from the overflow of a spring “die Oog”, to the southeast.

In terms of the evolution of the structure and form of the village, at its inception in the middle of the nineteenth century, the gridiron pattern of the streets in relation to the river and the location of the Market Square as the major public space in the village formed the main structuring elements. The lei water system fed by “die Oog” reinforced the grid pattern and the interrelationship between the village and its natural context.

During the early part of the twentieth century the through route from Hermanus to Gansbaai was relocated from Church Street to Bezuidenhout Street. The socially integrated nature of the village up to that time was disrupted by the application of the Group Areas Act and the relocation of families from areas such as Adderley, Caledon, Longmarket, Shortmarket and De Bruyn streets to “Die Skema” in the south.

Although a “coloured area” had been set aside in the village in 1954 by the Advisory Board for Land Ownership, and a sub-economic housing scheme initiated, (40 houses, a school and a church) Stanford was only officially designated into a coloured and a white residential area in 1968. Due to increased pressure for development, small scale farming activities within the village became displaced by a gradual process of densification and infill. During the latter half of the twentieth century the main route between Hermanus and Gansbaai bypassed the town. A growing influx of newcomers into the village became influential, establishing the Stanford Conservation Trust, and in declaring the core area of the village a Conservation Area in 1996, under the then National Monuments Act. Restoration processes added to the attraction of the village and increased pressure on the character and form of the place. In terms of architectural character it is evident that a range of typologies are located in the village reflecting a variety of architectural styles with most dwellings revealing considerable change and adaptation over time. Very few structures remain in their original condition. The emphasis and value lies in the collection



Painting of Robert Stanford's mill on the Kleine Riviers farm by Thomas Stokoe c1911 (Stanford 150, *Village Life 26*)

of relatively modest cottages rather than the grand isolated Victorian villas associated with places such as Hermanus. Adaptations to early barn houses include the addition and enclosure of stoeps, new doors and windows and roof materials, (corrugated iron replacing thatch after 1870) and the addition of outbuildings which often change the character of the house. Later adaptations to original barn houses included central and asymmetrical gables, often referred to as the Cape Revival style.

During the latter half of the nineteenth and early twentieth century the Victorian villas began to appear, single storied structures with predominantly asymmetrical forms and mass produced wood and ironwork, plaster surrounds to openings and quoin detailing on the corners. The style lasted into the 1930s and developed various eclectic forms such as the curvilinear gables referred to above and the replacement of wrought iron columns and balustrades with masonry.

### **Historical Background:**

The majority of the farms in the Overberg during the mid 18th century were owned by farmers who had their residential farms in the Cape district, but ran cattle and stock farms in the outlying regions. Mostly these farms were manned by Hottentot servants or slaves who acted as shepherds. Farms dating to the 18th century are: Zilwermynbosch, Kleinriviersvallei, Springfontein, Middleberg. As well as Modderrivier, Wortelgat which were granted in quitrent in the early half of the 19th century.

Captain Robert Stanford acquired the farms Springfontein, Zilwermyn and Middleberg, previously owned by Johannes Andreas Trutter, as well as Kleinriviersvallei where he lived. He built a watermill on Kleinriviersvallei and started market gardening. The vegetables were transported by cutter from de Kelders to Cape Town. Capt Stanford returned to England in 1849 and Kleinriviersvallei was leased to Capt Smailes.

In 1855 Kleinriviersvallei was sold to Phillipus de Bruyn and a town was laid out in 1857: Stanford. The town is laid out on a grid.

Stanford became a village in 1892. A voter's role of 1903 listed no fisherman living in Stanford, only farmers and 'carriers'. In 1919 Stanford was declared a municipality and it bought 'Die Oog' the main source of permanent water in the town.

During the Apartheid era, Stanford was declared a White Group Area and the 'Coloured' inhabitants were moved to the west of the town 'Die Skema'.

In the 1980s the town started developing as a holiday destination. Lady Anne Barnard visited Kleinriviersvallei in 1798 and described it as follows: 'kitchen filled with many slaves'. Brand lived in Cape Town, but farmhouse well furnished (Burman 1989). In the 1760s the Auret family held grazing licenses for land in the Kleinriviersvallei.

John William McGregor and Ephraim George (sons of John W Moore) settled at Stanford as builders and shopkeeper respectively. Mrs Ephraim Moore had a boarding house and it was there that the survivors of the wreck of the Birkenhead were sheltered.

### **Heritage Significance:**

Cultural significance is defined as “aesthetic, architectural, historical, scientific, social, spiritual, linguistic, technological value or significance”. (NHR Act).

### **Architectural significance**

There are a high number of conservation worthy structures in Stanford. They relate to the rich layering evident from the mid nineteenth century, and while many have been extensively restored and renovated, many retain their authenticity, particularly with regard to massing, form and house street relationships. Particularly noteworthy and worthy of heritage status are a number of streetscapes, where the continuity of urban form and the consistency of house street relationships contribute substantially to the character of the town, and Market Square which sets up the structure and form of the town and which is its social focus. Significance relates primarily to representivity; as typical examples of their period and Overstrand architectural typologies rather than to intrinsic architectural excellence. Architectural significance also relates to the diversity of architectural styles, from Victorian villas to the more modest cottages, often adapted barns, and their integrated nature which contribute to the village character.

### **Aesthetic significance**

Aesthetic significance relates primarily to the natural setting of the village, and the way in which the street grid is located in the bend of the Klein Rivier. A series of points of public access to this riverine corridor are located to the north in the form of a riverine walk and to the south in the form of the Kraal recreation area. The water from the spring to the south, die Oog, which feeds into the lei water system contributes strongly to the sense of place and of a village set in a natural green matrix. This sense of green is reinforced by the way in which buildings have been located close to street boundaries, contributing to place-making qualities along the street while leaving the rear portion of the erven open for the planting of fruit and vegetables. This pattern is evident in a wide number of Western Cape villages and is under threat due to inappropriate densification and infill. A sense of balance is thus evident in terms of the scale of the village, and its relationship to the riverine context. Heritage management actions thus need to ensure the visual spatial interrelationship between settlement and nature and appropriate public orientated activities along the river bank.

### **Social and historical**

Social significance relates primarily to issues of public access to the river for recreational purposes, to the continuing and enduring use of the Market Square for commonage from the earliest period of settlement in the mid-nineteenth century, to the displacement of the local coloured community from the village to “die Skema” as a result of Group Areas legislation. As with other towns in the Overstrand the spatial expression of racial segregation is clearly expressed in the structure and form of the village.

### **Scientific significance**

Scientific significance relates primarily to riverine ecology due to the location of the village on the bend of the river, the role of spring water in the overall infrastructure of the town and the extensive natural vegetation in the immediate vicinity, in particular the groves of milkwoods.

### **Technological significance**

Technological significance relates primarily to the infrastructure related to water, initially the water mill from the earliest days of the settlement, to the provision of lei-water and the role this played in the growth and development of the town. The management of the lei water system also has a social significance dimension.

### **Constraints/Vulnerabilities:**

While the proclamation of the Stanford Conservation Area has contributed to a large extent to the conservation heritage significance, a number of issues can be identified which could be regarded as threats to this significance. They include:

- Inconsistency in the application of the guidelines.
- Lack of clarity between guidelines and regulations.
- Lack of specificity in the guidelines with regard to particular development issues, particularly those related to height.
- Pressures for infill and densification.
- Inappropriate landscaping treatments of the Market Square which could impact on its heritage significance.
- The too literal interpretation of the guidelines often resulting in pastiche architecture and the inability to distinguish between old and new.
- Inappropriate development at the entrance to the town which could impact negatively on its rural setting.
- The enduring nature of racial spatial segregation and the inability to adequately address the historical injustices of the past. The opportunities offered by the watercourse and its recreational potential at the interface between the village and “die Skema” offer opportunities in this regard. Similarly some form of memorialisation to commemorate the displacement of the local coloured community, such as an interpretation panel at the site of the Mathilda May cottage, should be considered.

### **Proposed heritage conservation areas and special areas:**

It is recommended that the existing conservation areas demarcated for Stanford, namely areas A and B, be consolidated and extended to include the river courses to the north and south, the area immediately to the east of the main route between Hermanus and Gansbaai to preserve the scenic qualities of this work, and Die Bron school and church area, and “die Kraal” area to the south.

### **Heritage Management Recommendations:**

#### **Sources:**

Bulpin, TV. 2001. Discovering Southern Africa. Cape Town: Tafelberg Publishers Ltd.  
Burman, J. 1989. Hermanus. A guide to the ‘Riviera of the South’. Cape Town: Human & Rousseau  
Fransen, H & Cook, M. 1980. Old buildings of the Cape.  
Olivier, W & S. 2001. Touring in South Africa. Cape Town: STRUIK.  
Walton, J. 1995. Cape Cottages. Cape: Rustica Press.  
Hanekom, C 1992. Stanford Struktuurplan. Konsepverslag  
KrugerRoos 1998 A concept Structure plan for Stanford. Policy Document  
Stanford Conservation Study, Martin Kruger, 1993  
Stanford 150: A Valley Green, Annalize Mouton,  
Village Life No. 25, August/September 2007

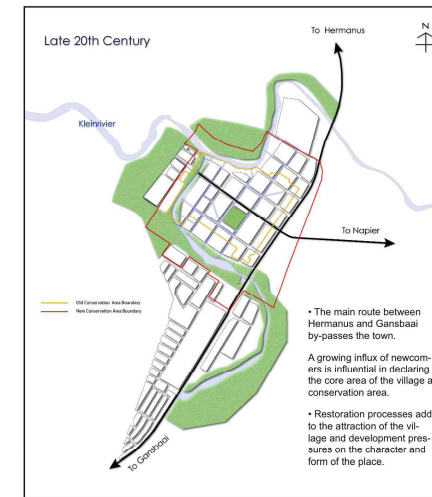
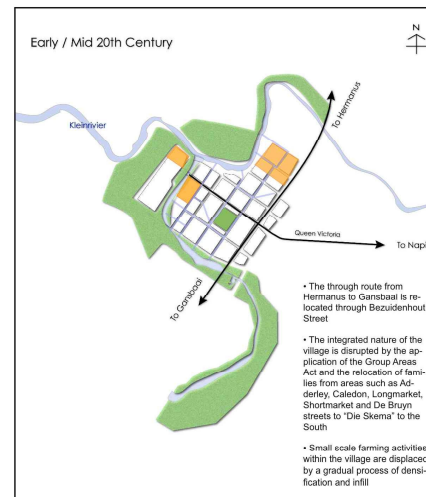
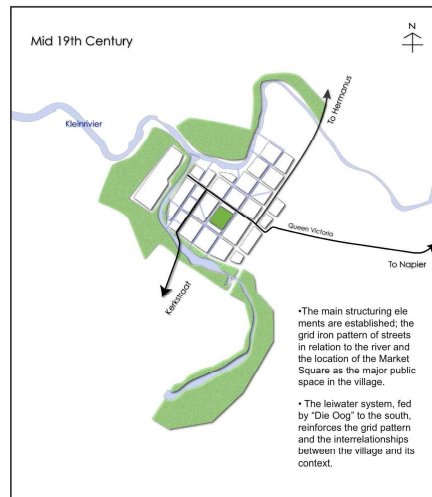
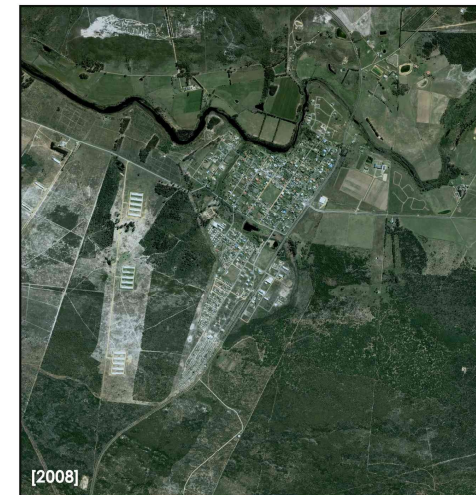
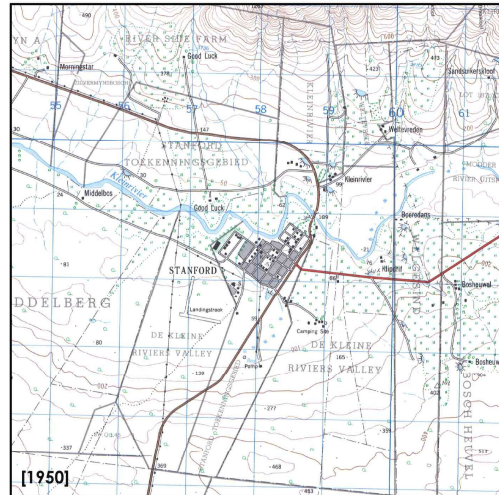
Stanford 150: Village is born, Annalize Mouton,  
 Village Life No. 26, October/November 2007  
 Stanford Stories, 150th Anniversary Edition, S.J.Du Toit, 2000

**Time line:**

DATE	EVENT	REFERENCE
From 2000 BP	Khoekhoe herders move into the region already inhabited by hunter- gatherer ancestors of the San. The Chainoqua became the dominant Khoekhoe group in the Overberg and were important trading partners of the VOC when they took the Cape in 1652.	Elphick & Gilomee: <i>The shaping of Solouth African society 1652-1840</i> , 1990
1707	“Kleijne Rivier”, or <i>Gonuka Gogga</i> as the Khoekhoe called it, was first mentioned in VOC records when Jan Hartog and his party grazed their cattle there after a bartering trip into the interior.	Mouton 25 p32
1723	The VOC expedition to the wreck of the <i>Schonnenberg</i> at Struisbaai, reported that they camped overnight at “Kleinriviersvalleij”.	Mouton 25 p32
1758	Grazing rights were granted to Michiel Vlotman at “de Kleyne Riviers Valley” and later to Jeremias Auret but he abandoned the farm in 1783.	Mouton 25 p.33
1783	Grazing rights at “Kleyne Riviers Valley” were transferred to Christoffel Brand who built the first homestead around 1785. Brand had formerly been the Postholder or Resident at Simons Bay where he was responsible for supplying provisions to the British Navy. Brand becomes the first registered owner of “Kleine Riviers Valley” in 1810.	Du Toit pp.4-6 Mouton 25 pp.33-35
1798	Lady Anne Barnard describes her visit to the area and overnight stay at Christoffel Brand’s farm “Kleine Riviers Valley” in May 1798.	Du Toit p.6-11 Mouton 25 pp.33-34
1813	“Kleyne Riviers Valley” was sold to Johannes Truter, Chief Justice of the Cape – the first South African born person to be knighted. Truter acquired six neighbouring farms: “Zilvermijnsbosch”, “Wolwe Fonteijn”, “Spring Fontein” and “Middel Berg”.	Du Toit p.11 Mouton 25 pp.34-37

	A Dutch traveller, M D Teenstra, describes the farm as being 12000 morgen with 500 cattle, 12000 sheep, extensive crops and 50 slaves to tend them.	
1831	Major Samuel Parlby, an ex Indian army officer, purchased the prize estate, stocking it with pedigree horses, cattle and merino sheep, experimenting with various crops and building a small mill for grinding wheat.	Du Toit p.13 Mouton 25 pp.37-38
1838	Captain Robert Stanford, British army officer on half pay, bought the farm at "Kleine Riviers Valley". A progressive farmer, he acquired the flour contract at Simons Town and established a larger dressing mill operated by John Moore. He also transported his produce by ship from Stanford s Cove on the coast.	Du Toit p.14-29 Mouton 26 pp.31-36
1849	The Anti-Convict Association protested against the landing of the "convict" ship, the <i>Neptune</i> , at the Cape. Under pressure from Sir Harry Smith, Stanford, was forced to break the colonists' embargo and provide the naval authorities with produce. As a result Stanford and his family were ostracised by the community and brought to financial ruin.	Du Toit p.14-29 Mouton 26 pp.31-36
1852	The <i>Birkenhead</i> was wrecked off Danger Point and survivors were taken in by Smailes who was managing "Kleine Riviers Valley" at the time.	Du Toit p.38-40 Mouton 26 p.35
1855	Despite opposition from the family, Stanford's farms were sold on auction in 1855. Philippus de Bruyn bought 4000 morgen of "Kleine Riviers Valley" but the homestead and mill was acquired by Ephraim Moore. Stanford's other farms in the district were bought by Duncan McFarlane and Henry Stroud.	Du Toit p.24 -32 Mouton 26 p.36 Historical Stanford on foot p.3
1856	De Bruyn laid out the <b>village of Stanford</b> with 265 erven which were auctioned off in May 1856. The first transfer was made to Duncan McFarlane in 1857. The town included the old homestead, mill and graveyards and was run by a Village Management Board 1857 -1919.	Du Toit p.31-34 Mouton 26 p.36
1861	The first Dutch Reformed Church was built on the site of Stanford's pigeon cote but the oldest extant church is St Thomas's Anglican Church built in 1880. It had a mission school attached to it - now Die Bron Primary School.	Du Toit pp.36, 56

1910	Stanford Secondary School (now Okkie Smuts Primary) was built in 1910. Prior to that there had been a number of farm schools and a small school in the village. In 1921 a school hostel was built and a farm acquired for agricultural students. A land service club was started in 1945.	Du Toit pp. 54-60
1919	Stanford became a municipality and entered a boom era with Church Street the centre of commercial activity in the 1920's and 1930's. A new Dutch Reformed Church was built in 1926, followed by the full gospel church in 1940.	Du Toit intro, pp.32, 36-38
1952	A Dutch Reformed Mission Church which had previously held services on farms, was built in 1952 in Stanford. It is now the United Reformed Church. The population in Stanford in 1951 was 411 Whites and 314 Coloureds and 2 Africans. The Coloureds lived in an area called 'Tetterkop" but were forced to move to Die Skema where 40 houses, a school and church were built, from 1955 onwards.	Du Toit pp.p.36-37, 46-47 Thomas
1961	From the mid 20 <sup>th</sup> century Stanford stagnated despite a tarred road being built and electricity supplied to the town in 1961. It was declared a White area in 1968.	Du Toit pp.34
1990	From 1990 there was renewed interest in Stanford and property development took place. In order to preserve its historic character Stanford Conservation Trust was established in 1991 and the town was declared conservation area by the NMC in 1996.	Du Toit pp.34-35 Historical Stanford on foot
1994	With the change in government, the National Housing Board undertook to build 396 sub-economic houses to replace shacks at Die Skema. Roads were tarred and services such as sewerage and water were supplied.	Du Toit pp.35 Thomas
2000	On 5 .12.2000 Stanford was incorporated into the Overstrand Municipality	Mouton 26 p.36



Evolution of place: Stanford

**Site name:** Stanford Church    Type of resource: Building  
Location: 3419 AD: S, E  
Erf/Farm : 159/  
Address: Longmarket Str Stanford

**Description:**

Stone Church with thatched roof, transept to the north. Side buttresses.  
Materials: Stone; Thatch  
Associated landscape features:

Original use: Religious

Current use: Church

Landscape type: Continuing

Design/Style:

Construction date: 1880

Historical period in which constructed: British Colonial

Theme: Religion and community

**Historical information:**

St Thomas Anglican Church with associated building, previously Mission School.

**Heritage Status:**

Previous status under National Monuments Act: National Monument

Current status under National Heritage Resources Act: Provincial Heritage Site

Responsible heritage authority: HWC

Approved grading: 2

Suggested grading: 2

Significance: Architectural, social, historical contextual significance. Oldest church in Stanford. Site of the St Thomas Mission School which moved to the present location, Die Bron, in 1939. Positive contribution to streetscape, square.

**Constraints and Opportunities:**

**Heritage Management Recommendations:**

Formal protection in terms of zoning scheme regulations (Grade 2)

- Conserve
- Remedial action to enhance significance
- Minimal intervention
- Interpretation
- HWC permit of approval required for any demolition, alteration or change in planning status



Proposed conservation/Special areas:

**References/Sources:**

**Site name:** Stanford Market Square    Type of resource: Open space  
Location: 3419 AD: 34 26' 12.39" S, 19 27' 6.69" E Google Earth  
Erf/Farm : /  
Address: Shortmarket and Longmarket Str Stanford

**Description:**

Open grassed square  
Materials:  
Associated landscape features:

Original use: Village square  
Current use: Open space  
Landscape type: Continuing  
Design/Style:  
Construction date: Mid 19th century  
Historical period in which constructed: British Colonial  
Theme: Historic settlement pattern  
Religion and community

**Historical information:**

Used during the DR Church Nagmaal (communion) weekend as a camping area for people coming in from the outlying areas by horse and ox wagon. One of few remaining village squares of the country.

**Heritage Status:**

Previous status under National Monuments Act:

Current status under National Heritage Resources Act: Provincial Heritage Site  
Responsible heritage authority:

Approved grading:

Suggested grading: 3A

Significance: Considerable social, historical, contextual significance. Used during DRC Nagmaal weekends for camping area. One of the few remaining village squares in the country.  
Primary structuring element and social focus of the village.  
Predominantly intact in terms of surrounding built environment.

Constraints and Opportunities: Development pressures, including upgrading of the landscaping treatments (surfacing, lighting etc) inappropriate to simple, rustic quality of the square

**Heritage Management Recommendations:**

Ongoing repair and maintenance  
Formal protection in terms of zoning scheme regulations (Grade 3A)



- Conserve
  - Remedial action to enhance significance
  - Minimal intervention
  - Interpretation
  - HWC permit of approval required for any demolition, alteration or change in planning status
- Formulation of Conservation Management Plan to control inappropriate land uses; signage; street lighting and edge treatment.

Additional research required to motivate for proposal for PHS (Grade 2) status

Proposed conservation/Special areas:

**References/Sources:**

**Site name:** Stanford House Formerly Magistrate's Court and Police cells  
**Type of resource:** Building  
**Location:** 3419 AD: S, E  
**Erf/Farm :** 80/  
**Address:** Church Str Stanford

**Description:**

Eclectic villa, with Cape Revival gables facing onto Church Street, wrap around verandah with masonry columns to the north. The courtroom and cells are possibly a later addition to an original home. The cells are intact.

**Materials:**

**Associated landscape features:**

Original use: Institutional

Current use: Villa

Landscape type:

Design/Style: Eclectic with Cape Revival elements

Construction date: Early 20th century

Historical period in which constructed: Union

Theme:

**Historical information:**

**Heritage Status:**

Previous status under National Monuments Act:

Current status under National Heritage Resources Act: Older than 60

Responsible heritage authority:

Approved grading:

Suggested grading: 3A

Significance: Historical social significance, predominantly due to role as police station and cells, magistrate's court and home of the police chief until 1969.

Constraints and Opportunities:

Heritage Management Recommendations:

Ongoing repair and maintenance

Formal protection in terms of zoning scheme regulations (Grade 3A)

- Conserve
- Remedial action to enhance significance
- Minimal intervention



- Interpretation
- HWC permit of approval required for any demolition, alteration or change in planning status

Proposed conservation/Special areas:

**References/Sources:**

**Site name:** Stanford Nursery School    Type of resource: Building  
**Location:** 3419 AD: S, E  
**Erf/Farm :** 101/  
**Address:** Stanford

**Description:**

3 bay thatched cottage with side gables  
**Materials:** Brick; Thatch  
**Associated landscape features:**

**Original use:** Residential  
**Current use:** Cottage  
**Landscape type:** Continuing  
**Design/Style:** Vernacular  
**Construction date:** 1910  
**Historical period in which constructed:** Union  
**Theme:** Historical settlement pattern  
Education

**Historical information:**

**Heritage Status:**

Previous status under National Monuments Act:

Current status under National Heritage Resources Act: Older than 60  
Responsible heritage authority:

Approved grading:

Suggested grading: 3A

**Significance:** Social historical significance. Representative example of unadorned cottage typically built by farmers for their weeked stay when they came to Stanford for Nagmaal and on business

**Constraints and Opportunities:**

**Heritage Management Recommendations:**

Formal protection in terms of zoning scheme regulations (Grade 3A)

- Conserve
- Remedial action to enhance significance
- Minimal intervention
- Interpretation
- HWC permit of approval required for any demolition, alteration or change in planning status



Proposed conservation/Special areas:

**References/Sources:**

**Site name:** Stanford School    Type of resource: Building  
**Location:** 3419 AD: S, E  
**Erf/Farm :** 104/  
**Address:** Stanford

**Description:**

Rusticated sandstone building. Double gables to street with central verandah. 3 vertical sash windows to each gable. Side wings added in 1920s with later additions to rear.

**Materials:**

**Associated landscape features:**

Original use: Institutional

Current use: School

Landscape type: Continuing

Design/Style:

Construction date: 1920s

Historical period in which constructed: Union

Theme: Education



**Historical information:**

**Heritage Status:**

Previous status under National Monuments Act:

Current status under National Heritage Resources Act: Older than 60

Approved grading:

Suggested grading: 3A

Responsible heritage authority:

Significance: Architectural, social, historical contextual significance. Intact and representative. Positive contribution to streetscape.

Constraints and Opportunities:

Heritage Management Recommendations:

Ongoing repair and maintenance

Formal protection in terms of zoning scheme regulations (Grade 3A)

- Conserve
- Remedial action to enhance significance
- Minimal intervention
- Interpretation

- HWC permit of approval required for any demolition, alteration or change in planning status

Proposed conservation/Special areas:

**References/Sources:**

**Site name:** Stanford House    Type of resource: Building  
**Location:** 3419 AD: S, E  
**Erf/Farm :** 1192/  
**Address:** Caledon Str Stanford

**Description:**

Row of cottages, 7 bays, sash windows, corrugated iron verandah with wooden support columns. Central triangulated gable, small attic windows. Low boundary wall to street.

**Materials:** Brick; Corrugated iron  
**Associated landscape features:**

**Original use:** Residential  
**Current use:** Terrace housing  
**Landscape type:** Continuing  
**Design/Style:** Victorian  
**Construction date:** Early 20th century  
**Historical period in which constructed:** Union  
**Theme:**

**Historical information:**

**Heritage Status:**

Previous status under National Monuments Act:

Current status under National Heritage Resources Act: Older than 60  
Responsible heritage authority: HWC

Approved grading:

Suggested grading: 3A

**Significance:** Architectural, historical, contextual significance. Intact and representative; positive contribution to streetscape.

**Constraints and Opportunities:**

**Heritage Management Recommendations:**

Ongoing repair and maintenance  
Formal protection in terms of zoning scheme regulations (Grade 3A)

- Conserve
- Remedial action to enhance significance
- Minimal intervention
- Interpretation



- HWC permit of approval required for any demolition, alteration or change in planning status

Proposed conservation/Special areas:

**References/Sources:**

**Site name:** Stanford House    Type of resource: Building  
Location: 3419 AD: S, E  
Erf/Farm : 521/  
Address: Cnr De Bruyn and Moore Str Stanford

**Description:**

3 bay cottage. Bull nosed corrugated iron verandah, wooden 2 x 6 sash windows.

Materials:

Associated landscape features:

Original use: Dwelling

Current use: Cottage

Landscape type:

Design/Style:

Construction date: c1880

Historical period in which constructed: Late 19th century

Theme:

**Historical information:**

Originally a house and stable

**Heritage Status:**

Previous status under National Monuments Act:

Current status under National Heritage Resources Act: Older than 60

Responsible heritage authority: HWC

Approved grading:

Suggested grading: 3A

Significance: Historical, contextual significance. Intact and representative; positive contribution to streetscape.

Constraints and Opportunities:

Heritage Management Recommendations:

Ongoing repair and maintenance

Formal protection in terms of zoning scheme regulations (Grade 3A)

- Conserve
- Remedial action to enhance significance
- Minimal intervention
- Interpretation
- HWC permit of approval required for any demolition, alteration or change in planning status



Proposed conservation/Special areas:

**References/Sources:**

**Site name:** Stanford House    Type of resource: Building  
**Location:** 3419 AD: S, E  
**Erf/Farm :** 1709/  
**Address:** Moore Str Stanford

**Description:**

4 bay cottage with 4 doors with fanlights.  
**Materials:**  
**Associated landscape features:**

**Original use:** Dwelling  
**Current use:** Cottage  
**Landscape type:**  
**Design/Style:**  
**Construction date:** Late 19th century  
**Historical period in which constructed:**  
**Theme:**

**Historical information:**

**Heritage Status:**

Previous status under National Monuments Act:

Current status under National Heritage Resources Act: Older than 60  
Responsible heritage authority: HWC

Approved grading:

Suggested grading: 3A

Significance: Architectural, historical significance. Intact and representative. Positive contribution to streetscape.

Constraints and Opportunities:

Heritage Management Recommendations:

Ongoing repair and maintenance  
Formal protection in terms of zoning scheme regulations (Grade 3A)

- Conserve
  - Remedial action to enhance significance
  - Minimal intervention
  - Interpretation
  - HWC permit of approval required for any demolition, alteration or change in planning status
- Proposed conservation/Special areas:



**References/Sources:**

**Site name:** Stanford 'House'    Type of resource: Building  
**Location:** 3419 AD: S, E  
**Erf/Farm :** 1310/  
**Address:** Church Str Stanford

**Description:**

Residential dwelling, with outbuildings, boarding house and shop. Gable to main house dated 1785. Later additions, including shop on Church Street  
**Materials:** Brick; Corrugated iron  
**Associated landscape features:**

**Original use:** Agricultural  
**Current use:** Villa  
**Landscape type:** Continuing  
**Design/Style:** Vernacular  
**Construction date:** 18th century - present  
**Historical period in which constructed:** Dutch/British Colonial  
**Theme:** Historical settlement pattern  
Tourism

**Historical information:**

**Heritage Status:**

Previous status under National Monuments Act:

Current status under National Heritage Resources Act: Older than 60  
Responsible heritage authority: HWC

Approved grading:

Suggested grading: 3A

**Significance:** Considerable historic, social and contextual significance. Considered to possibly be the oldest standing farmhouse in the Overberg.

**Constraints and Opportunities:**

**Heritage Management Recommendations:**

Ongoing repair and maintenance  
Formal protection in terms of zoning scheme regulations (Grade 3A)

- Conserve
- Remedial action to enhance significance
- Minimal intervention
- Interpretation



- HWC permit of approval required for any demolition, alteration or change in planning

Proposed conservation/Special areas:

**References/Sources:**

**Site name:** Stanford House    Type of resource: Building  
**Location:** 3419 AD: S, E  
**Erf/Farm :** 153/  
**Address:** 12 Queen Victoria Str Stanford

**Description:**

Fine free standing Victorian villa on strategic corner location. Diagonal entrance to what was earlier a shop, later a municipal office and later a bank. Highly decorated bull-nosed verandah with wooden columns. Protruding bay at corner with circular ventilator.

**Materials:** Brick; corrugated iron  
**Associated landscape features:**

**Original use:** Residential

**Current use:** Villa

**Landscape type:** Continuing

**Design/Style:** Victorian

**Construction date:** Early 20th century

**Historical period in which constructed:** Union

**Theme:** Historic settlement pattern



**Historical information:**

**Heritage Status:**

Previous status under National Monuments Act:

Current status under National Heritage Resources Act: Older than 60

Responsible heritage authority: HWC

Approved grading:

Suggested grading: 3A

**Significance:** Considerable architectural, historical, contextual significance. Ability to demonstrate adaptive use of buildings for residential and commercial purposes. Intact and representative, positive contribution to streetscape.

**Constraints and Opportunities:**

**Heritage Management Recommendations:**

Ongoing repair and maintenance

Formal protection in terms of zoning scheme regulations (Grade 3A)

- Conserve
- Remedial action to enhance significance

- Minimal intervention
- Interpretation
- HWC permit of approval required for any demolition, alteration or change in planning status

Proposed conservation/Special areas:

**References/Sources:**

**Site name:** Stanford House Formerly old Mill House      Type of resource: Building

Location: 3419 AD: S, E  
Erf/Farm : 1189/  
Address: Stanford

**Description:**

Free standing villa overlooking river. Wrap around verandah with sweeping central staircase to stoep.

Materials:

Associated landscape features: Remnant of old mill (see photo 0053)

Original use: Agricultural/ Industrial

Current use: Cottage

Landscape type: Continuing

Design/Style:

Construction date: Early 20th century

Historical period in which constructed: Union

Theme: Historical settlement pattern



**Historical information:**

The remains of the water mill, originally built by Samuel Parly and later enlarged by Robert Stanford, are located in the grounds. The mill stopped operating in the 1940s due to new milling laws and was later dismantled. Only the building remains.

**Heritage Status:**

Previous status under National Monuments Act:

Current status under National Heritage Resources Act: Older than 60

Approved grading:

Suggested grading: 3B

Responsible heritage authority: HWC

Significance: Historical, social significance. The remains of the water mill, originally built by Samuel Parly and later enlarged by Robert Stanford, are located in the grounds. The mill stopped operating in the 1940s due to new milling laws and was later dismantled. Only the building remains.

Constraints and Opportunities:

Heritage Management Recommendations:

Ongoing repair and maintenance

Formal protection in terms of zoning scheme regulations (Grade 3B)

- Conserve

- Remedial action to enhance
- HWC permit of approval required for any demolition, alteration or change in planning status
- Retain historical fabric (predominantly building exterior)

Proposed conservation/Special areas:

**References/Sources:**

**Site name:** Stanford House    Type of resource: Building  
**Location:** 3419 AD: S, E  
**Erf/Farm :** 160/  
**Address:** Cnr Shortmarket and Morton Str Stanford

**Description:**

H shaped dwelling with bull-nosed verandahs to protruding wings. Double entrances indicating possibility of two separate structures with later central linking structure.  
**Materials:** Brick; Corrugated iron  
**Associated landscape features:**

**Original use:** Residential  
**Current use:** House  
**Landscape type:** Continuing  
**Design/Style:**  
**Construction date:** Early 20th century.  
**Historical period in which constructed:** Union  
**Theme:** Historic settlement pattern

**Historical information:**

**Heritage Status:**

Previous status under National Monuments Act:

Current status under National Heritage Resources Act: Older than 60  
Responsible heritage authority: HWC

Approved grading:

Suggested grading: 3B

Significance: Architectural, historical, social, contextual significance. Intact and representative; positive contribution to streetscape.

Constraints and Opportunities:

Heritage Management Recommendations:

Ongoing repair and maintenance

Formal protection in terms of zoning scheme regulations (Grade 3B)

- Conserve
  - Remedial action to enhance
  - HWC permit of approval required for any demolition, alteration or change in planning status
  - Retain historical fabric (predominantly building exterior) Ongoing repair and maintenance
- Formal protection in terms of zoning scheme regulations (Grade 3B)



- Conserve
- Remedial action to enhance
- HWC permit of approval required for any demolition, alteration or change in planning status
- Retain historical fabric (predominantly building exterior)

Proposed conservation/Special areas:

**References/Sources:**

**Site name:** Duminy se Winkel Type of resource: Building  
**Location:** 3419 AD: S, E  
**Erf/Farm :** 96/  
**Address:** Cnr Church and Morton Str Stanford

**Description:**

Prominent structure on corner location, reflecting earlier role of Church Street as through route to Gansbaai. Splayed corner gable dated 1920. Wrap around bull-nosed verandah. Side gables to Church and Morton Streets. Commonly known as "Duminy se winkel" after previous owner.  
**Materials:** Brick; Corrugated iron  
**Associated landscape features:**

**Original use:** Commercial

**Current use:** Cottage

**Landscape type:**

**Design/Style:**

**Construction date:** 1920

**Historical period in which constructed:** Union

**Theme:** Historic settlement pattern



**Historical information:**

**Heritage Status:**

Previous status under National Monuments Act:

Current status under National Heritage Resources Act: Older than 60

Approved grading:

Suggested grading: 3B

Responsible heritage authority: HWC

Significance: Historical, social, contextual significance. Intact and representative. Positive contribution to streetscape.

Constraints and Opportunities:

Heritage Management Recommendations:

Ongoing repair and maintenance

Formal protection in terms of zoning scheme regulations (Grade 3B)

- Conserve
- Remedial action to enhance
- HWC permit of approval required for any demolition, alteration or change in planning status

- Retain historical fabric (predominantly building exterior)

Proposed conservation/Special areas:

**References/Sources:**

**Site name:** Die Kraal Type of resource: Open space  
**Location:** 3419 AD: 34 26' 38.91" S, 19 27' 14.02" E Google Earth  
**Erf/Farm :** /  
**Address:** Adjacent Mathilda Str Stanford

**Description:**

Recreation area, on south bank of river, adjacent to Willem Appel Dam. Extensive grove of ancient milkwoods. Parks demarcated with white painted stones, wooden boardwalks.

**Materials:**

**Associated landscape features:**

**Original use:**

**Current use:**

**Landscape type:**

**Design/Style:**

**Construction date:**

**Historical period in which constructed:**

**Theme:**



**Historical information:**

**Heritage Status:**

Previous status under National Monuments Act:

Current status under National Heritage Resources Act:  
Responsible heritage authority: HWC

Approved grading:

Suggested grading: 3B

Significance: Recreational, social, historical, environmental, contextual significance.

Constraints and Opportunities:

Heritage Management Recommendations:

Ongoing repair and maintenance

Formal protection in terms of zoning scheme regulations (Grade 3B)

- Conserve
- Remedial action to enhance
- HWC permit of approval required for any demolition, alteration or change in planning status
- Retain historical fabric (predominantly building exterior)

Proposed conservation/Special areas:

**References/Sources:**

**Site name:** Stanford House    Type of resource: Building  
**Location:** 3419 AD: S, E  
**Erf/Farm :** 559/  
**Address:** Daneel Str Stanford

**Description:**

L-shaped dwelling with corrugated iron roof, wooden sashes, diamond shaped windows to stoep walls. Later addition of curvilinear gables.

**Materials:** Brick; Corrugated iron

**Associated landscape features:**

**Original use:** Residential

**Current use:** Villa

**Landscape type:** Continuing

**Design/Style:** Cape Revival

**Construction date:** Early 20th century

**Historical period in which constructed:** Union

**Theme:** Historical settlement pattern

**Historical information:**

**Heritage Status:**

Previous status under National Monuments Act:

Current status under National Heritage Resources Act: Older than 60

Responsible heritage authority: HWC

Approved grading:

Suggested grading: 3B

**Significance:** Architectural, historical, contextual significance. Representative of larger erven on fringes of town.

**Constraints and Opportunities:**

**Heritage Management Recommendations:**

Ongoing repair and maintenance

Formal protection in terms of zoning scheme regulations (Grade 3B)

- Conserve
- Remedial action to enhance
- HWC permit of approval required for any demolition, alteration or change in planning status
- Retain historical fabric (predominantly building exterior)



Proposed conservation/Special areas:

**References/Sources:**

**Site name:** Stanford House    Type of resource: Building  
**Location:** 3419 AD: S, E  
**Erf/Farm :** 209/  
**Address:** Cnr King and Bezuidenhout Str Stanford

**Description:**

T shaped dwelling with verandahs onto King and Bezuidenhout Streets. The only unchanged Victorian cottage with verandahs on both streets.

**Materials:** Brick; Corrugated iron

**Associated landscape features:**

**Original use:** Residential

**Current use:** Verandah cottage

**Landscape type:** Continuing

**Design/Style:** Vernacular

**Construction date:** Late 19th/Early 20th century

**Historical period in which constructed:** Unin

**Theme:** Historic settlement pattern

**Historical information:**

**Heritage Status:**

Previous status under National Monuments Act:

Current status under National Heritage Resources Act: Older than 60

Responsible heritage authority: HWC

Approved grading:

Suggested grading: 3B

**Significance:** Architectural, historical, contextual significance. Intact and representative. Positive contribution to streetscape.

**Constraints and Opportunities:**

**Heritage Management Recommendations:**

Ongoing repair and maintenance

Formal protection in terms of zoning scheme regulations (Grade 3B)

- Conserve
- Remedial action to enhance
- HWC permit of approval required for any demolition, alteration or change in planning status
- Retain historical fabric (predominantly building exterior)



Proposed conservation/Special areas:

**References/Sources:**

**Site name:** Mathilda May's House      Type of resource: Building  
Location: 3419 AD: S, E  
Erf/Farm : 2098/  
Address: Longmarket Str Stanford

**Description:**

Ruins of footings visible from street.

Materials:

Associated landscape features:

Original use: Residential

Current use: Ruin

Landscape type: Relic

Design/Style:

Construction date: Early 20th century

Historical period in which constructed: Early 20th century

Theme: Apartheid

**Historical information:**

Associated with Mathilda May, who during the Apartheid era, was classified as "coloured" and ordered to leave her home and relocate to the "Skema" to the south of Stanford. She refused and stayed in the house to her death in 1980.

**Heritage Status:**

Previous status under National Monuments Act:

Current status under National Heritage Resources Act: Older than 60

Approved grading:

Suggested grading: 3B

Responsible heritage authority: HWC

Significance: Social, historical significance. Associated with Mathilda May, who during the Apartheid era, was classified as "coloured" and ordered to leave her home and relocate to the "Skema" to the south of Stanford. She refused and stayed in the house to her death in 1980.

Constraints and Opportunities:

Heritage Management Recommendations:

Ongoing repair and maintenance

Formal protection in terms of zoning scheme regulations (Grade 3B)

- Conserve
- Remedial action to enhance
- HWC permit of approval required for any demolition, alteration or change in planning status

- Retain historical fabric (predominantly building exterior)

Proposed conservation/Special areas:

**References/Sources:**

**Site name:** Stanford House    Type of resource: Building  
**Location:** 3419 AD: S, E  
**Erf/Farm :** 1149/  
**Address:** 22 Bezuidenhout Str Stanford

**Description:**

Free standing villa with hipped roof, wrap around verandah with masonry columns  
Elaborate teak front door with decorative fanlight.  
**Materials:** Brick; corrugated iron  
**Associated landscape features:**

**Original use:** Residential  
**Current use:** Villa  
**Landscape type:** Continuing  
**Design/Style:** Vernacular  
**Construction date:** Early 20th century  
**Historical period in which constructed:** Union  
**Theme:** Historic settlement pattern

**Historical information:**

**Heritage Status:**

Previous status under National Monuments Act:

Current status under National Heritage Resources Act: Older than 60  
Responsible heritage authority: HWC

Approved grading:

Suggested grading: 3B

**Significance:** Architectural, historical, contextual significance. Intact and representative, positive contribution to streetscape.

**Constraints and Opportunities:**

**Heritage Management Recommendations:**

Ongoing repair and maintenance

Formal protection in terms of zoning scheme regulations (Grade 3B)

- Conserve
- Remedial action to enhance
- HWC permit of approval required for any demolition, alteration or change in planning status
- Retain historical fabric (predominantly building exterior)



Proposed conservation/Special areas:

**References/Sources:**

**Site name:** Stanford House Stanford Heath Cottage      Type of resource: Building

Location: 3419 AD: S, E  
Erf/Farm : 266/  
Address: Bezuidenhout Str Stanford

**Description:**

Cottage with later additions to roof, prominent dormers.  
Materials: Brick; corrugated iron  
Associated landscape features:

Original use: Residential  
Current use: Cottage  
Landscape type: Continuing  
Design/Style:  
Construction date: Early 20th century  
Historical period in which constructed: Union  
Theme: Historical settlement pattern

**Historical information:**

**Heritage Status:**

Previous status under National Monuments Act:

Current status under National Heritage Resources Act: Older than 60  
Responsible heritage authority: HWC

Approved grading:

Suggested grading: 3B

Significance: Historical, contextual significance. Some contribution to streetscape.

Constraints and Opportunities:

Heritage Management Recommendations:

Ongoing repair and maintenance  
Formal protection in terms of zoning scheme regulations (Grade 3B)

- Conserve
- Remedial action to enhance
- HWC permit of approval required for any demolition, alteration or change in planning status
- Retain historical fabric (predominantly building exterior)



Proposed conservation/Special areas:

**References/Sources:**

**Site name:** Stanford House    Type of resource: Building  
Location: 3419 AD: S, E  
Erf/Farm : 176/  
Address: 55 Bezuidenhout Str Stanford

**Description:**

Simple 3 bay cottage, sash windows, no verandah.

Materials:

Associated landscape features:

Original use:

Current use:

Landscape type:

Design/Style:

Construction date:

Historical period in which constructed:

Theme:

**Historical information:**

**Heritage Status:**

Previous status under National Monuments Act:

Current status under National Heritage Resources Act: Older than 60

Responsible heritage authority: HWC

Approved grading:

Suggested grading: 3B

Significance: Historical, contextual significance. Intact and representative, positive contribution to streetscape

Constraints and Opportunities:

Heritage Management Recommendations:

Ongoing repair and maintenance

Formal protection in terms of zoning scheme regulations (Grade 3B)

- Conserve
- Remedial action to enhance
- HWC permit of approval required for any demolition, alteration or change in planning status
- Retain historical fabric (predominantly building exterior)

Proposed conservation/Special areas:



**References/Sources:**

**Site name:** Stanford House    Type of resource: Building  
**Location:** 3419AD: S, E  
**Erf/Farm :** 77/  
**Address:** Cnr Church and Queen Victoria Str Stanford

**Description:**

Structure facing onto Queen Victoria and Church Streets. The entrance door on the diagonal of the two streets is typical of the house/shop built during the 1920s but with the curved gable replaced by a pointed one.

**Materials:** Brick; Corrugated iron

**Associated landscape features:**

**Original use:** Agricultural

**Current use:** Longhouse

**Landscape type:** Continuing

**Design/Style:**

**Construction date:** Late 18th century

**Historical period in which constructed:** Dutch/British colonial

**Theme:** Historical settlement pattern



**Historical information:**

Originally built during the late 1700s as “lang huis”. Converted to a residential dwelling in the 1920s and later extended along Church Street to accommodate the post office.

**Heritage Status:**

**Previous status under National Monuments Act:**

**Current status under National Heritage Resources Act:** Older than 60

**Approved grading:**

**Suggested grading:** 3B

**Responsible heritage authority:** HWC

**Significance:** Architectural, social, historical, contextual significance. Intact and representative, positive contribution to streetscape.

**Constraints and Opportunities:**

**Heritage Management Recommendations:**

Ongoing repair and maintenance

Formal protection in terms of zoning scheme regulations (Grade 3B)

- Conserve

- Remedial action to enhance

- HWC permit of approval required for any demolition, alteration or change in planning status
- Retain historical fabric (predominantly building exterior)

Proposed conservation/Special areas:

**References/Sources:**

**Site name:** Stanford House    Type of resource: Building  
Location: 3419 AD: S, E  
Erf/Farm : 120/  
Address: 21 Du Toit Str Stanford

**Description:**

Cape Revival building, with two curvilinear gables facing onto street with substantial masonry central verandah.

Materials:

Associated landscape features:

Original use: Residential

Current use: Single storey symmetrical villa

Landscape type:

Design/Style:

Construction date: 1920s

Historical period in which constructed: Early 20th century

Theme:

**Historical information:**

**Heritage Status:**

Previous status under National Monuments Act:

Current status under National Heritage Resources Act: Older than 60

Responsible heritage authority: HWC

Significance:

Constraints and Opportunities:

Heritage Management Recommendations:

Ongoing repair and maintenance

Formal protection in terms of zoning scheme regulations (Grade 3B)

- Conserve
- Remedial action to enhance
- HWC permit of approval required for any demolition, alteration or change in planning status
- Retain historical fabric (predominantly building exterior)



Approved grading:

Suggested grading: 3B

Proposed conservation/Special areas:

**References/Sources:**

**Site name:** Stanford Church    Type of resource: Building  
Location: 3419 AD: S, E  
Erf/Farm : 110/  
Address: Cnr Church and Queen Victoria Str Stanford

**Description:**

Sandstone church built in octagonal form. Harvey tiles on the roof have replaced original corrugated iron roof. Sandstone base with plastered walls above.

Materials: Stone; Tile

Associated landscape features:

Original use: Religious

Current use: Church

Landscape type: Continuing

Design/Style:

Construction date: 1926

Historical period in which constructed: Union

Theme:

**Historical information:**

**Heritage Status:**

Previous status under National Monuments Act:

Current status under National Heritage Resources Act: Older than 60

Responsible heritage authority: HWC

Approved grading:

Suggested grading: 3B

Significance: Social contextual significance. Landmark status in village context.

Constraints and Opportunities:

Heritage Management Recommendations:

Ongoing repair and maintenance

Formal protection in terms of zoning scheme regulations (Grade 3B)

- Conserve
- Remedial action to enhance
- HWC permit of approval required for any demolition, alteration or change in planning status
- Retain historical fabric (predominantly building exterior)



Proposed conservation/Special areas:

**References/Sources:**

**Site name:** Galashiel's Lodge Type of resource: Building  
Location: 3419 AD: S, E  
Erf/Farm : 2167/  
Address: Cnr King and Longmarket Str Stanford

**Description:**

4 bay cottage with bull-nosed verandah onto tree lined street. Much altered.

Materials:

Associated landscape features:

Original use: Residential

Current use: Terraced housing

Landscape type: Continuing

Design/Style: Vernacular

Construction date: Early 20th century

Historical period in which constructed: Union

Theme: Historic settlement pattern

**Historical information:**

Associated with Jaap de Villiers who owned the land on which Gansbaai was established.

**Heritage Status:**

Previous status under National Monuments Act:

Current status under National Heritage Resources Act: Older than 60

Responsible heritage authority: HWC

Approved grading:

Suggested grading: 3B

Significance: Architectural, historical, contextual significance. Associated with Jaap de Villiers who owned the land on which Gansbaai was established.

Substantial agricultural lands were linked to the property and used for the propagation of fruit and vegetables. The whole block was one property until the 1990s. Positive contribution to streetscape.

Constraints and Opportunities:

Heritage Management Recommendations:

Ongoing repair and maintenance

Formal protection in terms of zoning scheme regulations (Grade 3B)

- Conserve

- Remedial action to enhance



- HWC permit of approval required for any demolition, alteration or change in planning status
- Retain historical fabric (predominantly building exterior)

Proposed conservation/Special areas:

**References/Sources:**

**Site name:** Stanford House    Type of resource: Building  
Location: 3419 AD: S, E  
Erf/Farm : 250/  
Address: 21 Bezuidenhout Str Stanford

**Description:**

4 bay cottage with bull-nosed verandah to street, enclosed stoepkamer.  
Materials: Brick; Corrugated iron  
Associated landscape features:

Original use: Residential

Current use: Cottage

Landscape type:

Design/Style:

Construction date: Late 19th century

Historical period in which constructed: British Colonial

Theme: Historic settlement pattern

**Historical information:**

**Heritage Status:**

Previous status under National Monuments Act:

Current status under National Heritage Resources Act: Older than 60

Responsible heritage authority: HWC

Approved grading:

Suggested grading: 3B

Significance: Architectural, historical, contextual significance. Intact and representative. Positive contribution to streetscape.

Constraints and Opportunities:

Heritage Management Recommendations:

Ongoing repair and maintenance

Formal protection in terms of zoning scheme regulations (Grade 3B)

- Conserve
- Remedial action to enhance
- HWC permit of approval required for any demolition, alteration or change in planning status
- Retain historical fabric (predominantly building exterior)

Proposed conservation/Special areas:



**References/Sources:**

**Site name:** Stanford House    Type of resource: Building  
**Location:** 3419 AD: S, E  
**Erf/Farm :** 162/  
**Address:** Cnr Shortmarket and Morton Str Stanford

**Description:**

Cape Revival villa on strategic corner location. Central verandah with detailed wrought iron columns. Gables dated 1925, 1950.  
**Materials:** Brick; Corrugated iron  
**Associated landscape features:**

**Original use:** Residential  
**Current use:** Villa  
**Landscape type:** Continuing  
**Design/Style:** Cape Revival  
**Construction date:** 1920s  
**Historical period in which constructed:** Union  
**Theme:** Historic settlement pattern  
Education

**Historical information:**

**Heritage Status:**

Previous status under National Monuments Act:

Current status under National Heritage Resources Act: Older than 60  
Responsible heritage authority: HWC

Approved grading:

Suggested grading: 3B

Significance: Architectural, historical, contextual significance. Intact and representative; positive contribution to streetscape.

Constraints and Opportunities:

Heritage Management Recommendations:

Ongoing repair and maintenance  
Formal protection in terms of zoning scheme regulations (Grade 3B)

- Conserve
- Remedial action to enhance
- HWC permit of approval required for any demolition, alteration or change in planning status
- Retain historical fabric (predominantly building exterior)



Proposed conservation/Special areas:

**References/Sources:**

**Site name:** Stanford Cemetery - N      Type of resource: Burial ground  
Location: 3419 AD: 34 26' 12.39" S, 19 27' 6.69" E Google Earth  
Erf/Farm : /  
Address: Moore Str Stanford

**Description:**

Situated along Moore Street, to the north of Queen Victoria Str  
Materials:  
Associated landscape features:

Original use: Burial ground  
Current use:  
Landscape type: Relic  
Design/Style:  
Construction date: 1920-1980s  
Historical period in which constructed:  
Theme: Mortuary practice  
Religion and community

**Historical information:**

**Heritage Status:**

Previous status under National Monuments Act:

Current status under National Heritage Resources Act: Older than 60  
Responsible heritage authority: SAHRA

Approved grading:

Suggested grading: 3B

Significance:

Constraints and Opportunities:

Heritage Management Recommendations:

Ongoing repair and maintenance

Formal protection in terms of the zoning scheme regulations and the NHRA

National Heritage Resources Act 25 of 1999

Burial Grounds and Graves: Section 36(3): No person may, without a permit issued by SAHRA (in this instance) -

Section 36(3)(b): destroy, damage, alter, exhume or remove from its original position or otherwise disturb any grave or burial ground older than 60 years which is situated outside a formal cemetery administered by a local authority; or Section 36(3)(c): bring onto or use at a burial ground or grave referred to in paragraph (3)(b) above any excavation equipment, or any equipment which assists in the detection or recovery of metals.



Proposed conservation/Special areas:

**References/Sources:**

**Site name:** Stanford NG Kerk    Type of resource: Building  
**Location:** 3419 AD: S, E  
**Erf/Farm :** 304/  
**Address:** Kiewiet Str Stanford

**Description:**

Simple 3 bay rectangular structure with gables to north and south. Bell tower to School Street. Corrugated iron roof, steel windows. New addition to east and west.

**Materials:**

**Associated landscape features:**

Original use: Religious

Current use: Church

Landscape type: Continuing

Design/Style:

Construction date: 1952

Historical period in which constructed: Republic

Theme: Religion and community

**Historical information:**

**Heritage Status:**

Previous status under National Monuments Act:

Current status under National Heritage Resources Act: Older than 60

Responsible heritage authority: HWC

Approved grading:

Suggested grading: 3B

Significance: Primarily social and contextual significance, including part of social grouping including the Bron School immediately to the east.

Constraints and Opportunities:

Heritage Management Recommendations:

Ongoing repair and maintenance

Formal protection in terms of zoning scheme regulations (Grade 3B)

- Conserve
- Remedial action to enhance
- HWC permit of approval required for any demolition, alteration or change in planning status
- Retain historical fabric (predominantly building exterior)



Proposed conservation/Special areas:

**References/Sources:**

**Site name:** Stanford Cemetery S      **Type of resource:** Burial ground  
**Location:** 3419 AD: 34 26' 12.58" S, 19 27' 3.71" E Google Earth  
**Erf/Farm :** /  
**Address:** Moore Str Stanford

**Description:**

Situated long Moore Str, to the south of Queen Victoria Str

**Materials:**

**Associated landscape features:**

**Original use:** Burial ground

**Current use:**

**Landscape type:** Relic

**Design/Style:**

**Construction date:** 1920-1980

**Historical period in which constructed:** Republic

**Theme:** Mortuary practice

**Historical information:**

**Heritage Status:**

**Previous status under National Monuments Act:**

**Current status under National Heritage Resources Act:** Older than 60

**Responsible heritage authority:** SAHRA

**Significance:** Social and contextual significance

**Constraints and Opportunities:**

**Heritage Management Recommendations:**

Ongoing repair and maintenance

Formal protection in terms of the zoning scheme regulations and the NHRA

National Heritage Resources Act 25 of 1999

Burial Grounds and Graves: Section 36(3): No person may, without a permit issued by SAHRA (in this instance) -

Section 36(3)(b): destroy, damage, alter, exhume or remove from its original position or otherwise disturb any grave or burial ground older than 60 years which is situated outside a formal cemetery administered by a local authority; or Section 36(3)(c): bring onto or use at a burial ground or grave referred to in paragraph (3)(b) above any excavation equipment, or any equipment which assists in the detection or recovery of metals.



**Approved grading:**

**Suggested grading:** 3B

Proposed conservation/Special areas:

**References/Sources:**

**Site name:** Stanford House    Type of resource: Building  
**Location:** 3419 AD: S, E  
**Erf/Farm :** 205/  
**Address:** 16 Bezuidenhout Str Stanford

**Description:**

4 bay cottage with bull-nosed verandah to street, stoepkamer. Later face brick columns to verandah.

**Materials:** Brick; corrugated iron

**Associated landscape features:**

**Original use:** Residential

**Current use:** Cottage

**Landscape type:** Continuing

**Design/Style:** Vernacular

**Construction date:** 1863

**Historical period in which constructed:** British Colonial

**Theme:** Historic settlement pattern

**Historical information:**

**Heritage Status:**

Previous status under National Monuments Act:

Current status under National Heritage Resources Act: Older than 60

Responsible heritage authority: HWC

Approved grading:

Suggested grading: 3B

**Significance:** Architectural, historical, contextual significance. Intact and representative, positive contribution to streetscape.

**Constraints and Opportunities:**

**Heritage Management Recommendations:**

Ongoing repair and maintenance

Formal protection in terms of zoning scheme regulations (Grade 3B)

- Conserve
- Remedial action to enhance
- HWC permit of approval required for any demolition, alteration or change in planning status
- Retain historical fabric (predominantly building exterior)



Proposed conservation/Special areas:

**References/Sources:**

**Site name:** Stanford House    Type of resource: Building  
**Location:** 3419 AD: S, E  
**Erf/Farm :** 51/  
**Address:** Caledon Str Stanford

**Description:**

4 bay cottage corrugated iron roof wooden sash windows, low boundary wall.  
Verandah with masonry columns.  
Materials: Brick; Corrugated iron  
Associated landscape features:

Original use: Residential  
Current use: Cottage  
Landscape type: Continuing  
Design/Style: Vernacular  
Construction date: Early 20th century  
Historical period in which constructed: Union  
Theme: Historical settlement pattern

**Historical information:**

**Heritage Status:**

Previous status under National Monuments Act:

Current status under National Heritage Resources Act: Older than 60  
Responsible heritage authority: HWC

Approved grading:

Suggested grading: 3B

Significance: Architectural, historical contextual significance. Intact and representative; positive contribution to streetscape.

Constraints and Opportunities:

Heritage Management Recommendations:

Ongoing repair and maintenance

Formal protection in terms of zoning scheme regulations (Grade 3B)

- Conserve
- Remedial action to enhance
- HWC permit of approval required for any demolition, alteration or change in planning status
- Retain historical fabric (predominantly building exterior)



Proposed conservation/Special areas:

**References/Sources:**

**Site name:** Stanford House    Type of resource: Building  
**Location:** 3419 AD: S, E  
**Erf/Farm :** 520/  
**Address:** Caledon Str Stanford

**Description:**

L shaped villa with side gable onto stoep. Partially enclosed verandah with stoep kamer, central triangulated gable.

**Materials:**

**Associated landscape features:**

**Original use:** Residential

**Current use:** Cottage

**Landscape type:** Continuing

**Design/Style:** Victorian

**Construction date:** Early 20th century

**Historical period in which constructed:** Union

**Theme:** Historical settlement pattern

**Historical information:**

**Heritage Status:**

**Previous status under National Monuments Act:**

**Current status under National Heritage Resources Act:** Older than 60

**Responsible heritage authority:** HWC

**Approved grading:**

**Suggested grading:** 3B

**Significance:** Architectural, historical contextual significance. Intact and representative. Positive contribution to streetscape.

**Constraints and Opportunities:**

**Heritage Management Recommendations:**

Ongoing repair and maintenance

Formal protection in terms of zoning scheme regulations (Grade 3B)

- Conserve
- Remedial action to enhance
- HWC permit of approval required for any demolition, alteration or change in planning status
- Retain historical fabric (predominantly building exterior)



Proposed conservation/Special areas:

**References/Sources:**

**Site name:** Stanford House    Type of resource: Building  
**Location:** 3419 AD: S, E  
**Erf/Farm :** 601/  
**Address:** Caledon Str Stanford

**Description:**

Cottage with later curvilinear gable to south, central pediment gable. Partially enclosed verandah.

**Materials:** Brick; Corrugated iron

**Associated landscape features:**

**Original use:** Residential

**Current use:** Cottage

**Landscape type:** Continoung

**Design/Style:** Vernacular

**Construction date:** Late 19th/early 20th century

**Historical period in which constructed:** Union

**Theme:** Historical settlement pattern

**Historical information:**

**Heritage Status:**

Previous status under National Monuments Act:

Current status under National Heritage Resources Act: Older than 60

Responsible heritage authority: HWC

Approved grading:

Suggested grading: 3B

**Significance:** Architectural, historical and contextual significance. Positive contribution to streetscape.

**Constraints and Opportunities:**

**Heritage Management Recommendations:**

Ongoing repair and maintenance

Formal protection in terms of zoning scheme regulations (Grade 3B)

- Conserve
- Remedial action to enhance
- HWC permit of approval required for any demolition, alteration or change in planning status
- Retain historical fabric (predominantly building exterior)



Proposed conservation/Special areas:

**References/Sources:**

**Site name:** Stanford House    Type of resource: Building  
**Location:** 3419 AD: S, E  
**Erf/Farm :** 425/  
**Address:** Cnr Caledon and Queen Victoria Str Stanford

**Description:**

3 bay cottage with “wolf-end” gables. Thatched roof, quoins to sashes.  
**Materials:** Brick; Thatch  
**Associated landscape features:**

**Original use:** Barn  
**Current use:** Cottage  
**Landscape type:** continuing  
**Design/Style:** Vernacular  
**Construction date:** Late 19th century  
**Historical period in which constructed:** British Colonial  
**Theme:** Historic settlement pattern  
**Vineyard/Orchard cultivation**



**Historical information:**

Originally a barn associated with Taljaard’s farming activities in the area between Caledon Street and the river. Transformed to a dwelling in 1921.

**Heritage Status:**

Previous status under National Monuments Act:

Current status under National Heritage Resources Act: Older than 60  
Responsible heritage authority: HWC

Approved grading:

Suggested grading: 3B

Significance: Architectural, historical, social, contextual significance. Intact and representative, positive contribution to streetscape.

Constraints and Opportunities:

Heritage Management Recommendations:

Ongoing repair and maintenance  
Formal protection in terms of zoning scheme regulations (Grade 3B)

- Conserve
- Remedial action to enhance
- HWC permit of approval required for any demolition, alteration or change in planning status
- Retain historical fabric (predominantly building exterior)

Proposed conservation/Special areas:

**References/Sources:**

**Site name:** Stanford Conference Centre and Hotel Previously Langhuis/Hennies Pub and Grill Type of resource: Building  
Location: 3419 AD: S, E  
Erf/Farm : 1067/  
Address: Cnr Church and Queen Victoria Str Stanford

**Description:**

Long house facing onto Queen Victoria Street, has curvilinear gable to the north, cat slide verandah to street and decorative wrought iron columns.  
Materials: Brick; Corrugated iron  
Associated landscape features:

Original use: Institutional/Commercial  
Current use: Barn  
Landscape type: Continuing  
Design/Style: Cape Revival  
Construction date: Early 20th century  
Historical period in which constructed: Union  
Theme: Historical settlement pattern



**Historical information:**

Originally a cow shed, later converted into a house (1903); known as the Langhuis.

**Heritage Status:**

Previous status under National Monuments Act:

Current status under National Heritage Resources Act: Older than 60  
Responsible heritage authority: HWC

Approved grading:

Suggested grading: 3B

Significance: Architectural, social, historical contextual significance. Intact and representative, positive contribution to streetscape.

Constraints and Opportunities:

Heritage Management Recommendations:

Ongoing repair and maintenance

Formal protection in terms of zoning scheme regulations (Grade 3B)

- Conserve
- Remedial action to enhance
- HWC permit of approval required for any demolition, alteration or change in planning status

- Retain historical fabric (predominantly building exterior)

Proposed conservation/Special areas:

**References/Sources:**

**Site name:** Stanford House    Type of resource: Building  
**Location:** 3419 AD: S, E  
**Erf/Farm :** 74/  
**Address:** 4 Church Str Stanford

**Description:**

**Materials:** Brick; Corrugated iron  
**Associated landscape features:**

**Original use:** Residential  
**Current use:** Verandah cottage  
**Landscape type:** Continuing  
**Design/Style:** Vernacular  
**Construction date:** Early 20th century  
**Historical period in which constructed:** Union  
**Theme:** Historical settlement pattern

**Historical information:**

**Heritage Status:**

Previous status under National Monuments Act:

Current status under National Heritage Resources Act: Older than 60  
Responsible heritage authority: HWC

Approved grading:

Suggested grading: 3B

Significance: Architectural, historical, contextual significance. Intact and representative, positive contribution to streetscape.

Constraints and Opportunities:

Heritage Management Recommendations:

Ongoing repair and maintenance

Formal protection in terms of zoning scheme regulations (Grade 3B)

- Conserve
- Remedial action to enhance
- HWC permit of approval required for any demolition, alteration or change in planning status
- Retain historical fabric (predominantly building exterior)

Proposed conservation/Special areas:



**References/Sources:**

**Site name:** Stanford House    Type of resource: Building  
**Location:** 3419 AD: S, E  
**Erf/Farm :** 75/  
**Address:** Caledon Str Stanford

**Description:**

4 bay cottage, curvilinear end gables. Bull-nosed verandah with masonry columns.  
Attic windows.  
Materials: Brick; Corrugated iron  
Associated landscape features:

Original use: Residential  
Current use: Cottage  
Landscape type: Continuing  
Design/Style: Cape Revival  
Construction date: Late 19th/Early 20th century  
Historical period in which constructed: Union  
Theme: Historical settlement pattern

**Historical information:**

**Heritage Status:**

Previous status under National Monuments Act:

Current status under National Heritage Resources Act: Older than 60  
Responsible heritage authority: HWC

Approved grading:

Suggested grading: 3B

Significance: Architectural, historical, contextual significance. Intact and representative, positive contribution to streetscape.

Constraints and Opportunities:

Heritage Management Recommendations:

Ongoing repair and maintenance  
Formal protection in terms of zoning scheme regulations (Grade 3B)

- Conserve
- Remedial action to enhance
- HWC permit of approval required for any demolition, alteration or change in planning status
- Retain historical fabric (predominantly building exterior)



Proposed conservation/Special areas:

**References/Sources:**

**Site name:** Stanford House    Type of resource: Building  
**Location:** 3419 AD: S, E  
**Erf/Farm :** 141/  
**Address:** Shortmarket Str Stanford

**Description:**

Villa with hipped corrugated iron roof with front verandah, masonry columns, detailed wooden fretwork to verandah, stoepkamers.

**Materials:** Brick; Corrugated iron

**Associated landscape features:**

**Original use:** Residential

**Current use:** Villa

**Landscape type:** Continuing

**Design/Style:** Vernacular

**Construction date:** Early 20th century

**Historical period in which constructed:** Union

**Theme:** Historical settlement pattern

**Historical information:**

**Heritage Status:**

Previous status under National Monuments Act:

Current status under National Heritage Resources Act: Older than 60

Responsible heritage authority: HWC

Approved grading:

Suggested grading: 3B

**Significance:** Architectural, historical, contextual significance. Intact and representative, positive contribution to streetscape.

**Constraints and Opportunities:**

**Heritage Management Recommendations:**

Ongoing repair and maintenance

Formal protection in terms of zoning scheme regulations (Grade 3B)

- Conserve
- Remedial action to enhance
- HWC permit of approval required for any demolition, alteration or change in planning status
- Retain historical fabric (predominantly building exterior)



Proposed conservation/Special areas:

**References/Sources:**

**Site name:** Stanford House    Type of resource: Building  
**Location:** 3419 AD: S, E  
**Erf/Farm :** 113/  
**Address:** Shortmarket Str Stanford

**Description:**

Cape Revival building with gables onto Queen Victoria and Shortmarket Streets.  
Verandah onto Queen Victoria Street with masonry columns.  
**Materials:** Brick; Corrugated iron  
**Associated landscape features:**

**Original use:** Recreational

**Current use:**

**Landscape type:** Continuing

**Design/Style:**

**Construction date:** 1925

**Historical period in which constructed:** Union

**Theme:** Historical settlement pattern

**Historical information:**

Originally a bar and shop, later converted to a hotel.

**Heritage Status:**

Previous status under National Monuments Act:

Current status under National Heritage Resources Act: Older than 60

Responsible heritage authority: HWC

Approved grading:

Suggested grading: 3B

**Significance:** Architectural, social, historical, contextual significance. Originally a bar and shop, later converted to a hotel. Intact and representative, positive contribution to streetscape.

**Constraints and Opportunities:**

**Heritage Management Recommendations:**

Ongoing repair and maintenance

Formal protection in terms of zoning scheme regulations (Grade 3B)

- Conserve
- Remedial action to enhance
- HWC permit of approval required for any demolition, alteration or change in planning status



- Retain historical fabric (predominantly building exterior)

Proposed conservation/Special areas:

**References/Sources:**

**Site name:** Stanford House    Type of resource: Building  
Location: 3419 AD: S, E  
Erf/Farm : 301/  
Address: 16 Du Toit Str Stanford

**Description:**

Prominent Cape Revival building on corner location. Curvilinear gables to Du Toit and Shortmarket Streets. Wrap around masonry verandah.  
Materials: Brick; Corrugated iron  
Associated landscape features:

Original use: Residential  
Current use: Villa  
Landscape type: Continuing  
Design/Style:  
Construction date: 1930s  
Historical period in which constructed: Union  
Theme: Historical settlement pattern

**Historical information:**

Built as the pastorie (parsonage) for the minister of the Dutch Reformed Church.

**Heritage Status:**

Previous status under National Monuments Act:

Current status under National Heritage Resources Act: Older than 60  
Responsible heritage authority: HWC

Approved grading:

Suggested grading: 3B

Significance: Architectural, social, historical and contextual significance. Built as the pastorie (parsonage) for the minister of the Dutch Reformed Church.  
Intact and representative. Positive contribution to streetscape.

Constraints and Opportunities:

Heritage Management Recommendations:

Ongoing repair and maintenance  
Formal protection in terms of zoning scheme regulations (Grade 3B)

- Conserve
- Remedial action to enhance
- HWC permit of approval required for any demolition, alteration or change in planning status



- Retain historical fabric (predominantly building exterior)

Proposed conservation/Special areas:

**References/Sources:**

**Site name:** Stanford Tourism Bureau    Type of resource: Building  
Location: 3419 AD: S, E  
Erf/Farm : 443/  
Address: Queen Str Stanford

**Description:**

Cape Revival building with later arched verandah.  
Materials:  
Associated landscape features:

Original use: Residential  
Current use: Villa  
Landscape type: Continuing  
Design/Style: Cape Revival  
Construction date: 1925  
Historical period in which constructed: Union  
Theme: Historical settlement pattern

**Historical information:**

**Heritage Status:**

Previous status under National Monuments Act:

Current status under National Heritage Resources Act: Older than 60  
Responsible heritage authority: HWC

Approved grading:

Suggested grading: 3B

Significance: Architectural, social, historical, contextual significance. Early Stanford municipal office. Positive contribution to streetscape

Constraints and Opportunities:

Heritage Management Recommendations:

Ongoing repair and maintenance  
Formal protection in terms of zoning scheme regulations (Grade 3B)

- Conserve
- Remedial action to enhance
- HWC permit of approval required for any demolition, alteration or change in planning status
- Retain historical fabric (predominantly building exterior)

Proposed conservation/Special areas:



**References/Sources:**

**Site name:** Stanford House    Type of resource: Building  
Location: 3419 AD: S, E  
Erf/Farm : 157/  
Address: Queen Str Stanford

**Description:**

L shaped Cape Revival building with front verandah, masonry columns.  
Materials: Brick; corrugated iron  
Associated landscape features:

Original use: Residential  
Current use: Villa  
Landscape type: Continuing  
Design/Style: Cape Revival  
Construction date: Early 20th century  
Historical period in which constructed: Union  
Theme: Historical settlement pattern

**Historical information:**

**Heritage Status:**

Previous status under National Monuments Act:

Current status under National Heritage Resources Act: Older than 60  
Responsible heritage authority: HWC

Approved grading:

Suggested grading: 3B

Significance: Architectural, historical, contextual significance. Intact and representative, positive contribution to streetscape

Constraints and Opportunities:

Heritage Management Recommendations:

Ongoing repair and maintenance  
Formal protection in terms of zoning scheme regulations (Grade 3B)

- Conserve
- Remedial action to enhance
- HWC permit of approval required for any demolition, alteration or change in planning status
- Retain historical fabric (predominantly building exterior)

Proposed conservation/Special areas:



**References/Sources:**

**Site name:** Stanford House    Type of resource: Building  
**Location:** 3419 AD: S, E  
**Erf/Farm :** 105/  
**Address:** Shortmarket Str Stanford

**Description:**

3 bay cottage with protruding bay. Windows, door details similar to erf 106. Bull-nosed verandah with wooden columns.

**Materials:** Brick; corrugated iron

**Associated landscape features:**

**Original use:** Residential

**Current use:** Cottage

**Landscape type:** Continuing

**Design/Style:** Vernacular

**Construction date:** Late 19th century

**Historical period in which constructed:** British Colonial

**Theme:** Historical settlement pattern

**Historical information:**

**Heritage Status:**

Previous status under National Monuments Act:

Current status under National Heritage Resources Act: Older than 60

Responsible heritage authority: HWC

Approved grading:

Suggested grading: 3B

**Significance:** Architectural, social, historical, contextual significance. Intact and representative. Positive contribution to streetscape.

**Constraints and Opportunities:**

**Heritage Management Recommendations:**

Ongoing repair and maintenance

Formal protection in terms of zoning scheme regulations (Grade 3B)

- Conserve
- Remedial action to enhance
- HWC permit of approval required for any demolition, alteration or change in planning status
- Retain historical fabric (predominantly building exterior)



Proposed conservation/Special areas:

**References/Sources:**

**Site name:** Stanford House    Type of resource: Building  
**Location:** 3419 AD: S, E  
**Erf/Farm :** 106/  
**Address:** Shortmarket Str Stanford

**Description:**

3 bay cottage, 2 x 3 sash windows, front door with fanlight. Verandah onto Shortmarket Street with masonry columns, detailed wooden fretwork.  
**Materials:** Brick; corrugated iron  
**Associated landscape features:**

**Original use:** Residential  
**Current use:** Cottage  
**Landscape type:** Continuing  
**Design/Style:** Vernacular  
**Construction date:** 1910  
**Historical period in which constructed:** Union  
**Theme:** Historical settlement pattern

**Historical information:**

**Heritage Status:**

Previous status under National Monuments Act:

Current status under National Heritage Resources Act: Older than 60  
Responsible heritage authority: HWC

Approved grading:

Suggested grading: 3B

**Significance:** Architectural, historical, contextual significance. Intact and representative; positive contribution to streetscape.

**Constraints and Opportunities:**

**Heritage Management Recommendations:**

Ongoing repair and maintenance

Formal protection in terms of zoning scheme regulations (Grade 3B)

- Conserve
- Remedial action to enhance
- HWC permit of approval required for any demolition, alteration or change in planning status
- Retain historical fabric (predominantly building exterior)



Proposed conservation/Special areas:

**References/Sources:**

**Site name:** Stanford House    Type of resource: Building  
**Location:** 3419 AD: S, E  
**Erf/Farm :** 2089/  
**Address:** Caledon and De Bruyn Str Stanford

**Description:**

Dwelling with hipped corrugated iron roof, small windows to attic. Later additions to south and east.

**Materials:** Brick; Corrugated iron

**Associated landscape features:**

**Original use:** Residential

**Current use:** Villa

**Landscape type:** Continuing

**Design/Style:**

**Construction date:** Late 19th/Early 20th century

**Historical period in which constructed:** Union

**Theme:** Historical settlement pattern

**Historical information:**

**Heritage Status:**

Previous status under National Monuments Act:

Current status under National Heritage Resources Act: Older than 60

Responsible heritage authority: HWC

Approved grading:

Suggested grading: 3B

**Significance:** Some historical, architectural and contextual significance. Significant corner location.

**Constraints and Opportunities:**

**Heritage Management Recommendations:**

Ongoing repair and maintenance

Formal protection in terms of zoning scheme regulations (Grade 3B)

- Conserve
- Remedial action to enhance
- HWC permit of approval required for any demolition, alteration or change in planning status
- Retain historical fabric (predominantly building exterior)



Proposed conservation/Special areas:

**References/Sources:**

**Site name:** Stanford House    Type of resource: Building  
Location: 3419 AD: S, E  
Erf/Farm : 2165/  
Address: 5 Morton Stanford

**Description:**

5 bay Victorian villa, verandah with simple cast iron columns. Attic door to side gable.

Materials: Brick; Corrugated iron

Associated landscape features:

Original use: Residential

Current use: Cottage

Landscape type: Continuing

Design/Style: Vernacular

Construction date: Early 20th century.

Historical period in which constructed: Union

Theme: Historical settlement pattern

**Historical information:**

**Heritage Status:**

Previous status under National Monuments Act:

Current status under National Heritage Resources Act: Older than 60

Responsible heritage authority: HWC

Approved grading:

Suggested grading: 3B

Significance: Architectural, historical, contextual significance. Intact and representative; positive contribution to streetscape.

Constraints and Opportunities:

Heritage Management Recommendations:

Ongoing repair and maintenance

Formal protection in terms of zoning scheme regulations (Grade 3B)

- Conserve
- Remedial action to enhance
- HWC permit of approval required for any demolition, alteration or change in planning status
- Retain historical fabric (predominantly building exterior)



Proposed conservation/Special areas:

**References/Sources:**

**Site name:** Stanford House    Type of resource: Building  
Location: 3419 AD: S, E  
Erf/Farm : 2100/  
Address: 22 De Bruyn Str Stanford

**Description:**

Simple 3 bay cottage. Wooden 2 x 6 sash windows.  
Materials: Brick; Corrugated iron  
Associated landscape features:

Original use: Residential  
Current use: Cottage  
Landscape type: Continuing  
Design/Style: Vernacular  
Construction date: Late 19th century  
Historical period in which constructed: British Colonial  
Theme: Historical settlement pattern

**Historical information:**

**Heritage Status:**

Previous status under National Monuments Act:

Current status under National Heritage Resources Act: Older than 60  
Responsible heritage authority: HWC

Approved grading:

Suggested grading: 3B

Significance: Architectural, historical contextual significance. Intact and representative. Example of Stanford cottage architecture. Positive contribution to streetscape.

Constraints and Opportunities:

Heritage Management Recommendations:

Ongoing repair and maintenance

Formal protection in terms of zoning scheme regulations (Grade 3B)

- Conserve
- Remedial action to enhance
- HWC permit of approval required for any demolition, alteration or change in planning status
- Retain historical fabric (predominantly building exterior)



Proposed conservation/Special areas:

**References/Sources:**

**Site name:** Stanford House    Type of resource: Building  
**Location:** 3419 AD: S, E  
**Erf/Farm :** 88/  
**Address:** Cnr De Bruyn and Church Str Stanford

**Description:**

3 bay cottage, 2 x 6 wooden sash windows with plaster surrounds. Verandah with wooden columns. Curvilinear side gables. Important corner location.  
**Materials:** Brick; Corrugated iron  
**Associated landscape features:**

**Original use:** Residential  
**Current use:** Cottage  
**Landscape type:** Continuing  
**Design/Style:** Cape Revival  
**Construction date:** Early 20th century  
**Historical period in which constructed:** Union  
**Theme:** Historical settlement pattern

**Historical information:**

**Heritage Status:**

Previous status under National Monuments Act:

Current status under National Heritage Resources Act: Older than 60  
Responsible heritage authority: HWC

Approved grading:

Suggested grading: 3B

**Significance:** Architectural, historical contextual significance. Intact and representative. Positive contribution to streetscape.

**Constraints and Opportunities:**

**Heritage Management Recommendations:**

Ongoing repair and maintenance

Formal protection in terms of zoning scheme regulations (Grade 3B)

- Conserve
- Remedial action to enhance
- HWC permit of approval required for any demolition, alteration or change in planning status
- Retain historical fabric (predominantly building exterior)



Proposed conservation/Special areas:

**References/Sources:**

**Site name:** Stanford House    Type of resource: Building  
Location: 3419 AD: S, E  
Erf/Farm : 166/  
Address: 39 Shortmarket Str Stanford

**Description:**

4 bay villa with verandah to street, masonry boundary walls with wooden supports.  
Materials: Brick; Corrugated iron  
Associated landscape features:

Original use: Residential  
Current use: Villa  
Landscape type: Continuing  
Design/Style: Cape Revival  
Construction date: Early 20th century  
Historical period in which constructed: Union  
Theme: Historical settlement pattern

**Historical information:**

**Heritage Status:**

Previous status under National Monuments Act:

Current status under National Heritage Resources Act: Older than 60  
Responsible heritage authority: HWC

Approved grading:

Suggested grading: 3B

Significance: Architectural, historical, contextual significance. Intact and representative. Positive contribution to streetscape.

Constraints and Opportunities:

Heritage Management Recommendations:

Ongoing repair and maintenance  
Formal protection in terms of zoning scheme regulations (Grade 3B)

- Conserve
- Remedial action to enhance
- HWC permit of approval required for any demolition, alteration or change in planning status
- Retain historical fabric (predominantly building exterior)

Proposed conservation/Special areas:



**References/Sources:**

**Site name:** Stanford House    Type of resource: Building  
**Location:** 3419 AD: S, E  
**Erf/Farm :** 180/  
**Address:** Bezuidenhout Str Stanford

**Description:**

3 bay cottage with central, triangular gable; front verandah with simple cast iron columns.

**Materials:**

**Associated landscape features:**

Original use: Residential

Current use: Cottage

Landscape type: Continuing

Design/Style: Vernacular

Construction date: Early 20th century

Historical period in which constructed: Union

Theme: Historical settlement pattern

**Historical information:**

**Heritage Status:**

Previous status under National Monuments Act:

Current status under National Heritage Resources Act: Older than 60

Responsible heritage authority: HWC

Approved grading:

Suggested grading: 3B

**Significance:** Architectural, historical, contextual significance. Intact and representative, positive contribution to streetscape

**Constraints and Opportunities:**

**Heritage Management Recommendations:**

Ongoing repair and maintenance

Formal protection in terms of zoning scheme regulations (Grade 3B)

- Conserve
- Remedial action to enhance
- HWC permit of approval required for any demolition, alteration or change in planning status
- Retain historical fabric (predominantly building exterior)



Proposed conservation/Special areas:

**References/Sources:**

**Site name:** Stanford House    Type of resource: Building  
Location: 3419 AD: S, E  
Erf/Farm : 282/  
Address: Cnr Morton and Bezuidenhout Str Stanford

**Description:**

3 bay cottage set back from Street. Simple front verandah with masonry columns.  
Materials: Brick; Corrugated iron  
Associated landscape features:

Original use: Residential  
Current use: Cottage  
Landscape type: Continuing  
Design/Style: Vernacular  
Construction date: Early 20th century  
Historical period in which constructed: Union  
Theme: Historical settlement pattern

**Historical information:**

**Heritage Status:**

Previous status under National Monuments Act:

Current status under National Heritage Resources Act: Older than 60  
Responsible heritage authority: HWC

Approved grading:

Suggested grading: 3B

Significance: Architectural, historical, contextual significance. Intact and representative, positive contribution to streetscape

Constraints and Opportunities:

Heritage Management Recommendations:

Ongoing repair and maintenance  
Formal protection in terms of zoning scheme regulations (Grade 3B)

- Conserve
- Remedial action to enhance
- HWC permit of approval required for any demolition, alteration or change in planning status
- Retain historical fabric (predominantly building exterior)

Proposed conservation/Special areas:



**References/Sources:**

**Site name:** Stanford House    Type of resource: Building  
**Location:** 3419 AD: S, E  
**Erf/Farm :** 177/  
**Address:** 5 Morton Str Stanford

**Description:**

3 bay cottage, bull-nosed verandah with masonry columns. Casement windows.  
**Materials:** Brick; Corrugated iron  
**Associated landscape features:**

**Original use:** Residential  
**Current use:** Cottage  
**Landscape type:** Continuing  
**Design/Style:** vernacular  
**Construction date:** Early 20th century  
**Historical period in which constructed:** Union  
**Theme:** Historical settlement pattern

**Historical information:**

**Heritage Status:**

Previous status under National Monuments Act:

Current status under National Heritage Resources Act: Older than 60  
Responsible heritage authority: HWC

Approved grading:

Suggested grading: 3B

**Significance:** Architectural, historical, contextual significance. Intact and representative, positive contribution to streetscape

**Constraints and Opportunities:**

**Heritage Management Recommendations:**

Ongoing repair and maintenance  
Formal protection in terms of zoning scheme regulations (Grade 3B)

- Conserve
- Remedial action to enhance
- HWC permit of approval required for any demolition, alteration or change in planning status
- Retain historical fabric (predominantly building exterior)

**Proposed conservation/Special areas:**



**References/Sources:**

**Site name:** Stanford House    Type of resource: Building  
Location: 3419 AD: S, E  
Erf/Farm : 285/  
Address: 3 Morton Str Stanford

**Description:**

3 bay cottage, wooden sashes. Simple verandah with masonry columns.  
Materials: Brick; Corrugated iron  
Associated landscape features:

Original use: Residential  
Current use: Cottage  
Landscape type: Continuing  
Design/Style: Vernacular  
Construction date: Early 20th century  
Historical period in which constructed: Union  
Theme: Historical settlement pattern

**Historical information:**

**Heritage Status:**

Previous status under National Monuments Act:

Current status under National Heritage Resources Act: Older than 60  
Responsible heritage authority: HWC

Approved grading:

Suggested grading: 3B

Significance: Architectural, historical, contextual significance. Intact and representative, positive contribution to streetscape

Constraints and Opportunities:

Heritage Management Recommendations:

Ongoing repair and maintenance  
Formal protection in terms of zoning scheme regulations (Grade 3B)

- Conserve
- Remedial action to enhance
- HWC permit of approval required for any demolition, alteration or change in planning status
- Retain historical fabric (predominantly building exterior)

Proposed conservation/Special areas:



**References/Sources:**

**Site name:** Stanford House    Type of resource: Building  
**Location:** 3419 AD: S, E  
**Erf/Farm :** 290/  
**Address:** De Bruyn Str Stanford

**Description:**

L shaped dwelling, Cape Revival gables, wooden sashes. Probably older fabric within.

**Materials:** Brick; Corrugated iron

**Associated landscape features:**

**Original use:** Residential

**Current use:** Villa

**Landscape type:** Continuing

**Design/Style:** Cape Revival

**Construction date:** Early 20th century

**Historical period in which constructed:** Union

**Theme:** Historical settlement pattern

**Historical information:**

**Heritage Status:**

Previous status under National Monuments Act:

Current status under National Heritage Resources Act: Older than 60

Responsible heritage authority: HWC

Significance: Architectural, historical, contextual significance.

Constraints and Opportunities:

Heritage Management Recommendations:

Ongoing repair and maintenance

Formal protection in terms of zoning scheme regulations (Grade 3B)

- Conserve
- Remedial action to enhance
- HWC permit of approval required for any demolition, alteration or change in planning status
- Retain historical fabric (predominantly building exterior)



Approved grading:

Suggested grading: 3B

Proposed conservation/Special areas:

**References/Sources:**

**Site name:** Stanford House    Type of resource: Building  
**Location:** 3419 AD: S, E  
**Erf/Farm :** 173/  
**Address:** 40 Bezuidenhout Str Stanford

**Description:**

3 bay cottage, verandah onto street with simple masonry columns, sash windows with plaster quoins.

**Materials:**

**Associated landscape features:**

Original use: Residential

Current use: Cottage

Landscape type: Continuing

Design/Style: Vernacular

Construction date: Early 20th century

Historical period in which constructed: Union

Theme: Historical settlement pattern

**Historical information:**

**Heritage Status:**

Previous status under National Monuments Act:

Current status under National Heritage Resources Act: Older than 60

Responsible heritage authority: HWC

Approved grading:

Suggested grading: 3B

Significance: Architectural, historical, contextual significance. Intact and representative, positive contribution to streetscape

Constraints and Opportunities:

Heritage Management Recommendations:

Ongoing repair and maintenance

Formal protection in terms of zoning scheme regulations (Grade 3B)

- Conserve
- Remedial action to enhance
- HWC permit of approval required for any demolition, alteration or change in planning status
- Retain historical fabric (predominantly building exterior)



Proposed conservation/Special areas:

**References/Sources:**

**Site name:** Stanford House    Type of resource: Building  
**Location:** 3419 AD: S, E  
**Erf/Farm :** 164/  
**Address:** 38 Longmarket Str Stanford

**Description:**

3 bay cottage, sash windows with plastered relief surrounds, corrugated iron roof.  
Well restored.

**Materials:** Brick; Corrugated iron  
**Associated landscape features:**

**Original use:** Residential

**Current use:** Cottage

**Landscape type:** Continuing

**Design/Style:** Vernacular

**Construction date:** Late 19th century.

**Historical period in which constructed:** British Colonial

**Theme:** Historical settlement pattern

**Historical information:**

**Heritage Status:**

Previous status under National Monuments Act:

Current status under National Heritage Resources Act: Older than 60

Responsible heritage authority: HWC

Approved grading:

Suggested grading: 3B

**Significance:** Architectural, historical, associational contextual significance part of important grouping. Associational significance related to previous owner, Michael Sutton, internationally acknowledged architect. Intact and representative, positive contribution to streetscape.

**Constraints and Opportunities:**

**Heritage Management Recommendations:**

Ongoing repair and maintenance

Formal protection in terms of zoning scheme regulations (Grade 3B)

- Conserve
- Remedial action to enhance
- HWC permit of approval required for any demolition, alteration or change in planning status
- Retain historical fabric (predominantly building exterior)



Proposed conservation/Special areas:

**References/Sources:**

**Site name:** Stanford House    Type of resource: Building  
Location: 3419 AD: S, E  
Erf/Farm : 169/  
Address: Longmarket Str Stanford

**Description:**

Simple rectangular structure with corrugated iron roof, enclosed verandah to street.  
Materials: Brick; corrugated iron  
Associated landscape features:

Original use: Residential  
Current use: Cottage  
Landscape type: Continuing  
Design/Style: Vernacular  
Construction date: Late 19th century  
Historical period in which constructed: British Colonial  
Theme: Historical settlement pattern

**Historical information:**

**Heritage Status:**

Previous status under National Monuments Act:

Current status under National Heritage Resources Act: Older than 60  
Responsible heritage authority: HWC

Approved grading:

Suggested grading: 3B

Significance: Architectural, historical, contextual. Intact and representative but in poor condition. Positive contribution to streetscape.

Constraints and Opportunities:

Heritage Management Recommendations:

Ongoing repair and maintenance  
Formal protection in terms of zoning scheme regulations (Grade 3B)

- Conserve
- Remedial action to enhance
- HWC permit of approval required for any demolition, alteration or change in planning status
- Retain historical fabric (predominantly building exterior)

Proposed conservation/Special areas:



**References/Sources:**

**Site name:** Stanford House    Type of resource: Building  
Location: 3419 AD: S, E  
Erf/Farm : 161/  
Address: Cnr Morton and Longmarket Str Stanford

**Description:**

Cape Revival building, two curvilinear gables to street, with central verandah. Sash windows with shutters.

Materials:

Associated landscape features:

Original use: Residential

Current use: Villa

Landscape type: Continuing

Design/Style: Cape Revival

Construction date: 1920

Historical period in which constructed: Union

Theme: Historical settlement pattern

**Historical information:**

**Heritage Status:**

Previous status under National Monuments Act:

Current status under National Heritage Resources Act: Older than 60

Responsible heritage authority: HWC

Approved grading:

Suggested grading: 3B

Significance: Architectural, contextual significance. Intact and representative. Positive contribution to streetscape.

Constraints and Opportunities:

Heritage Management Recommendations:

Ongoing repair and maintenance

Formal protection in terms of zoning scheme regulations (Grade 3B)

- Conserve
- Remedial action to enhance
- HWC permit of approval required for any demolition, alteration or change in planning status
- Retain historical fabric (predominantly building exterior)Ongoing repair and maintenance



Proposed conservation/Special areas:

**References/Sources:**

**Site name:** Stanford House    Type of resource: Building  
Location: 3419 AD: S, E  
Erf/Farm : 179/  
Address: Cnr Morton and Longmarket Str Stanford

**Description:**

3 bay cottage with cat slide verandah, low boundary wall. Hipped roof with dormer to attic.

Materials: Brick; Corrugated iron

Associated landscape features:

Original use: Residential

Current use: Cottage

Landscape type: Continuing

Design/Style: Vernacular

Construction date: Late 19th century

Historical period in which constructed: British Colonial

Theme: Historical settlement pattern

**Historical information:**

**Heritage Status:**

Previous status under National Monuments Act:

Current status under National Heritage Resources Act: Older than 60

Responsible heritage authority: HWC

Approved grading:

Suggested grading: 3B

Significance: Architectural, historical, contextual significance. Intact and representative, positive contribution to streetscape and square.

Constraints and Opportunities:

Heritage Management Recommendations:

Ongoing repair and maintenance

Formal protection in terms of zoning scheme regulations (Grade 3B)

- Conserve
- Remedial action to enhance
- HWC permit of approval required for any demolition, alteration or change in planning status
- Retain historical fabric (predominantly building exterior)Ongoing repair and maintenance



Proposed conservation/Special areas:

**References/Sources:**

**Site name:** Stanford House Villa Isabelle      **Type of resource:** Building  
**Location:** 3419 AD: S, E  
**Erf/Farm :** 422/  
**Address:** Longmarket Str Stanford

**Description:**

Semi-detached dwelling, 6 bays, bull-nosed candy striped verandah to street. Sash windows with shutters. Low wooden balustrade to street.

**Materials:**

**Associated landscape features:**

Original use: Residential

Current use: Terraced house

Landscape type: Continuing

Design/Style: Victorian

Construction date: Early 20th century

Historical period in which constructed: Union

Theme: Historic settlement pattern

**Historical information:**

**Heritage Status:**

Previous status under National Monuments Act:

Current status under National Heritage Resources Act: Older than 60

Responsible heritage authority: HWC

Approved grading:

Suggested grading: 3B

Significance: Architectural, historical, contextual significance. Intact and representative; positive contribution to streetscape and square.

Constraints and Opportunities:

Heritage Management Recommendations:

Ongoing repair and maintenance

Formal protection in terms of zoning scheme regulations (Grade 3B)

- Conserve
- Remedial action to enhance
- HWC permit of approval required for any demolition, alteration or change in planning status
- Retain historical fabric (predominantly building exterior)Ongoing repair and maintenance



Proposed conservation/Special areas:

**References/Sources:**

**Site name:** Stanford House    Type of resource: Building  
Location: 3419 AD: S, E  
Erf/Farm : 187/  
Address: Longmarket Str Stanford

**Description:**

Free standing Cape Revival building. Wrap around bull-nosed verandah.  
Materials:  
Associated landscape features:

Original use: Residential  
Current use: Villa  
Landscape type: Continuing  
Design/Style: Cape Revival  
Construction date: 1923  
Historical period in which constructed: Union  
Theme: Historical settlement pattern

**Historical information:**

**Heritage Status:**

Previous status under National Monuments Act:

Current status under National Heritage Resources Act: Older than 60  
Responsible heritage authority: HWC

Approved grading:

Suggested grading: 3B

Significance: Architectural, social, historical, contextual significance. Built for the second mayor of Stanford. Intact and representative; positive contribution to streetscape and square.

Constraints and Opportunities:

Heritage Management Recommendations:

Ongoing repair and maintenance

Formal protection in terms of zoning scheme regulations (Grade 3B)

- Conserve
- Remedial action to enhance
- HWC permit of approval required for any demolition, alteration or change in planning status
- Retain historical fabric (predominantly building exterior)Ongoing repair and maintenance

Proposed conservation/Special areas:



**References/Sources:**

**Site name:** Stanford House    Type of resource: Building  
**Location:** 3419 AD: S, E  
**Erf/Farm :** 186/  
**Address:** Longmarket Str Stanford

**Description:**

Free standing villa facing Market Square. Two flanking wings with gable ends, central bull-nosed verandah. Fine front door with fanlight.

**Materials:**

**Associated landscape features:**

Original use: Residential

Current use: Villa

Landscape type: Continuing

Design/Style: Victorian

Construction date: Late 19th century

Historical period in which constructed: British Colonial

Theme: Historical settlement pattern

**Historical information:**

**Heritage Status:**

Previous status under National Monuments Act:

Current status under National Heritage Resources Act: Older than 60

Responsible heritage authority: HWC

Approved grading:

Suggested grading: 3B

**Significance:** Architectural, social, historical, contextual significance. Built by Hendrik Vermeulen, responsible for the construction of many houses in Stanford and Hermanus. Continuous ownership by the Vermeulen over generations. Intact and representative. Positive contribution to streetscape and square.

**Constraints and Opportunities:**

**Heritage Management Recommendations:**

Ongoing repair and maintenance

Formal protection in terms of zoning scheme regulations (Grade 3B)

- Conserve
- Remedial action to enhance
- HWC permit of approval required for any demolition, alteration or change in planning status



- Retain historical fabric (predominantly building exterior)Ongoing repair and maintenance

Proposed conservation/Special areas:

**References/Sources:**

**Site name:** Stanford House    Type of resource: Building  
**Location:** 3419 AD: S, E  
**Erf/Farm :** 194/  
**Address:** Cnr Queen Victoria and Longmarket Str Stanford

**Description:**

Large freestanding villa with later bay onto Longmarket Street. Convex verandah with central gable with finial.

**Materials:**

**Associated landscape features:**

**Original use:** Residential

**Current use:** Villa

**Landscape type:** Continuing

**Design/Style:**

**Construction date:** Late 19th century

**Historical period in which constructed:** British Colonial

**Theme:** Historical settlement pattern

**Historical information:**

**Heritage Status:**

Previous status under National Monuments Act:

Current status under National Heritage Resources Act: Older than 60

Responsible heritage authority: HWC

Approved grading:

Suggested grading: 3B

**Significance:** Architectural, historical, contextual significance. Positive contribution to streetscape and square.

**Constraints and Opportunities:**

**Heritage Management Recommendations:**

Ongoing repair and maintenance

Formal protection in terms of zoning scheme regulations (Grade 3B)

- Conserve
- Remedial action to enhance
- HWC permit of approval required for any demolition, alteration or change in planning status
- Retain historical fabric (predominantly building exterior)Ongoing repair and maintenance



Proposed conservation/Special areas:

**References/Sources:**

**Site name:** Stanford House    Type of resource: Building  
**Location:** 3419 AD: S, E  
**Erf/Farm :** 262/  
**Address:** Bezuidenhout Str Stanford

**Description:**

3 bay cottage with, stoepkamer (including bathroom when reticulated water was implemented in 1945), verandah with wooden columns, wooden sashes.

**Materials:**

**Associated landscape features:**

Original use: Residential

Current use: Cottage

Landscape type: Continuing

Design/Style: Vernacular

Construction date: Late 19th century

Historical period in which constructed: British Colonial

Theme: Historical settlement pattern

**Historical information:**

**Heritage Status:**

Previous status under National Monuments Act:

Current status under National Heritage Resources Act: Older than 60

Responsible heritage authority: HWC

Significance: Architectural, historical, contextual significance.

Intact and representative, positive contribution to streetscape.

Constraints and Opportunities:

Heritage Management Recommendations:

Ongoing repair and maintenance

Formal protection in terms of zoning scheme regulations (Grade 3B)

- Conserve
- Remedial action to enhance
- HWC permit of approval required for any demolition, alteration or change in planning status
- Retain historical fabric (predominantly building exterior)Ongoing repair and maintenance



Approved grading:

Suggested grading: 3B

Proposed conservation/Special areas:

**References/Sources:**

**Site name:** Stanford House    Type of resource: Building  
Location: 3419AD: S, E  
Erf/Farm : 256/  
Address: Cnr Daneel and Du Toit Stanford

**Description:**

Materials:  
Associated landscape features:

Original use: Residential  
Current use: Villa  
Landscape type: Continuing  
Design/Style:  
Construction date: 1930s  
Historical period in which constructed: Union  
Theme: Historical settlement pattern

**Historical information:**

**Heritage Status:**

Previous status under National Monuments Act:

Current status under National Heritage Resources Act: Older than 60  
Responsible heritage authority: HWC

Significance: Some contextual significance

Constraints and Opportunities:

Heritage Management Recommendations:

Ongoing repair and maintenance  
Formal protection in terms of zoning scheme regulations (Grade 3C)

- Conserve wherever possible
- Retain historical fabric wherever possible (exterior only)
- Conserve and enhance contribution to overall character and streetscape (predominantly public/private interface)
- HWC permit of approval required for any demolition, alteration or change in planning status
- Demolition only to be considered if appropriate adaptive reuses cannot be established

Formal protection in terms of zoning scheme regulations (Grade 3C)

Proposed conservation/Special areas:



Approved grading:

Suggested grading: 3C

**References/Sources:**

**Site name:** Stanford House    Type of resource: Building  
Location: 3419AD: S, E  
Erf/Farm : 592/  
Address: Cnr Daneel and Du Toit Str Stanford

**Description:**

Single storey villa with Cape Revival gables  
Materials: Brick; Corrugated iron  
Associated landscape features:

Original use: Residential  
Current use: Villa  
Landscape type: Continuing  
Design/Style: Cape Revival  
Construction date: 1928  
Historical period in which constructed: Union  
Theme: Historical settlement pattern

**Historical information:**

**Heritage Status:**

Previous status under National Monuments Act:

Current status under National Heritage Resources Act: Older than 60  
Responsible heritage authority: HWC

Significance: Some intrinsic and contextual significance

Constraints and Opportunities:

Heritage Management Recommendations:

Ongoing repair and maintenance  
Formal protection in terms of zoning scheme regulations (Grade 3C)

- Conserve wherever possible
- Retain historical fabric wherever possible (exterior only)
- Conserve and enhance contribution to overall character and streetscape (predominantly public/private interface)
- HWC permit of approval required for any demolition, alteration or change in planning status
- Demolition only to be considered if appropriate adaptive reuses cannot be established



Approved grading:

Suggested grading: 3C

Proposed conservation/Special areas:

**References/Sources:**

**Site name:** Stanford House    Type of resource: Building  
**Location:** 3419 AD: S, E  
**Erf/Farm :** 258/  
**Address:** Bezuidenhout Str Stanford

**Description:**

Single storey hipped roof thatch cottage with some Arts and Crafts elements  
**Materials:** Brick; Thatch  
**Associated landscape features:**

**Original use:** Residential  
**Current use:** Cottage  
**Landscape type:** Continuing  
**Design/Style:**  
**Construction date:** 1920s  
**Historical period in which constructed:** Union  
**Theme:** Historical settlement pattern

**Historical information:**

**Heritage Status:**

Previous status under National Monuments Act:

Current status under National Heritage Resources Act: Older than 60  
Responsible heritage authority: HWC

Significance: Some intrinsic and architectural significance

Constraints and Opportunities:

Heritage Management Recommendations:

Ongoing repair and maintenance  
Formal protection in terms of zoning scheme regulations (Grade 3C)

- Conserve wherever possible
- Retain historical fabric wherever possible (exterior only)
- Conserve and enhance contribution to overall character and streetscape (predominantly public/private interface)
- HWC permit of approval required for any demolition, alteration or change in planning status
- Demolition only to be considered if appropriate adaptive reuses cannot be established



Approved grading:

Suggested grading: 3C

Proposed conservation/Special areas:

**References/Sources:**

**Site name:** Stanford House    Type of resource: Building  
**Location:** 3419 AD: S, E  
**Erf/Farm :** 200/  
**Address:** Bezuidenhout Str Stanford

**Description:**

Single storey villa with wrap around verandah  
**Materials:** Brick; Corrugated iron  
**Associated landscape features:**

**Original use:** Residential

**Current use:** Villa

**Landscape type:** Continuing

**Design/Style:**

**Construction date:** 1920s

**Historical period in which constructed:** Union

**Theme:** Historical settlement pattern

**Historical information:**

**Heritage Status:**

Previous status under National Monuments Act:

Current status under National Heritage Resources Act: Older than 60

Responsible heritage authority: HWC

Significance: Some intrinsic and contextual significance

Constraints and Opportunities:

Heritage Management Recommendations:

Ongoing repair and maintenance

Formal protection in terms of zoning scheme regulations (Grade 3C)

- Conserve wherever possible
- Retain historical fabric wherever possible (exterior only)
- Conserve and enhance contribution to overall character and streetscape (predominantly public/private interface)
- HWC permit of approval required for any demolition, alteration or change in planning status
- Demolition only to be considered if appropriate adaptive reuses cannot be established



Approved grading:

Suggested grading: 3C

Proposed conservation/Special areas:

**References/Sources:**

**Site name:** Stanford House    Type of resource: Building  
Location: 3419 AD: S, E  
Erf/Farm : 1660/  
Address: Longmarket Str Stanford

**Description:**

Cottage with later additions  
Materials: Brick; Corrugated iron  
Associated landscape features:

Original use: Residential  
Current use: Cottage  
Landscape type: Continuing  
Design/Style:  
Construction date: 1920s  
Historical period in which constructed: Union  
Theme:

**Historical information:**

**Heritage Status:**

Previous status under National Monuments Act:

Current status under National Heritage Resources Act: Older than 60  
Responsible heritage authority: HWC

Significance: Some intrinsic and contextual significance

Constraints and Opportunities:

Heritage Management Recommendations:

Ongoing repair and maintenance  
Formal protection in terms of zoning scheme regulations (Grade 3C)

- Conserve wherever possible
- Retain historical fabric wherever possible (exterior only)
- Conserve and enhance contribution to overall character and streetscape (predominantly public/private interface)
- HWC permit of approval required for any demolition, alteration or change in planning status
- Demolition only to be considered if appropriate adaptive reuses cannot be established



Approved grading:

Suggested grading: 3C

Proposed conservation/Special areas:

**References/Sources:**

**Site name:** Stanford House    Type of resource: Building  
Location: 3419 AD: S, E  
Erf/Farm : 191/  
Address: Cnr Queen Victoria and Longmarket Str Stanford

**Description:**

Single storey cottage with hipped roof. Possibly earlier terrace.  
Materials: Brick; Corrugated iron  
Associated landscape features:

Original use: Residential  
Current use: Cottage  
Landscape type: Continuing  
Design/Style:  
Construction date: Early 20th century  
Historical period in which constructed: Pre WWII  
Theme: Historic settlement pattern

**Historical information:**

**Heritage Status:**

Previous status under National Monuments Act:

Current status under National Heritage Resources Act: Older than 60  
Responsible heritage authority: HWC

Significance: Some intrinsic and contextual significance

Constraints and Opportunities:

Heritage Management Recommendations:

Ongoing repair and maintenance  
Formal protection in terms of zoning scheme regulations (Grade 3C)

- Conserve wherever possible
- Retain historical fabric wherever possible (exterior only)
- Conserve and enhance contribution to overall character and streetscape (predominantly public/private interface)
- HWC permit of approval required for any demolition, alteration or change in planning status
- Demolition only to be considered if appropriate adaptive reuses cannot be established



Approved grading:

Suggested grading: 3C

Proposed conservation/Special areas:

**References/Sources:**

**Site name:** Stanford House    Type of resource: Building  
Location: 3419 AD: S, E  
Erf/Farm : 183/  
Address: 35 Longmarket Str Stanford

**Description:**

Materials: Brick; Corrugated iron  
Associated landscape features:

Original use: Residential  
Current use: Villa  
Landscape type: Continuing  
Design/Style: Victorian  
Construction date: Early 20th century  
Historical period in which constructed: Union  
Theme: Historic settlement pattern

**Historical information:**

**Heritage Status:**

Previous status under National Monuments Act:

Current status under National Heritage Resources Act: Older than 60  
Responsible heritage authority: HWC

Significance: Some intrinsic and contextual significance

Constraints and Opportunities:

Heritage Management Recommendations:

Ongoing repair and maintenance  
Formal protection in terms of zoning scheme regulations (Grade 3C)

- Conserve wherever possible
- Retain historical fabric wherever possible (exterior only)
- Conserve and enhance contribution to overall character and streetscape (predominantly public/private interface)
- HWC permit of approval required for any demolition, alteration or change in planning status
- Demolition only to be considered if appropriate adaptive reuses cannot be established

Proposed conservation/Special areas:



Approved grading:

Suggested grading: 3C

**References/Sources:**

**Site name:** Stanford House    Type of resource: Building  
**Location:** 3419 AD: S, E  
**Erf/Farm :** 1006/  
**Address:** Cnr Adderley and Longmarket Str Stanford

**Description:**

**Materials:** Brick; Corrugated asbestos  
**Associated landscape features:**

**Original use:** Residential  
**Current use:** Cottage  
**Landscape type:** Continuing  
**Design/Style:**  
**Construction date:** Early 20th century  
**Historical period in which constructed:** Union  
**Theme:** Historical settlement pattern

**Historical information:**

**Heritage Status:**

Previous status under National Monuments Act:

Current status under National Heritage Resources Act: Older than 60  
Responsible heritage authority: HWC

Significance: Some intrinsic and contextual significance

Constraints and Opportunities:

Heritage Management Recommendations:

Ongoing repair and maintenance  
Formal protection in terms of zoning scheme regulations (Grade 3C)

- Conserve wherever possible
- Retain historical fabric wherever possible (exterior only)
- Conserve and enhance contribution to overall character and streetscape (predominantly public/private interface)
- HWC permit of approval required for any demolition, alteration or change in planning status
- Demolition only to be considered if appropriate adaptive reuses cannot be established

Proposed conservation/Special areas:



Approved grading:

Suggested grading: 3C

**References/Sources:**

**Site name:** Stanford House    Type of resource: Building  
Location: 3419 AD: S, E  
Erf/Farm : 1647/  
Address: Adderley Str Stanford

**Description:**

Materials:  
Associated landscape features:

Original use: Residential  
Current use: Cottage  
Landscape type: Continuing  
Design/Style:  
Construction date: Early 20th century  
Historical period in which constructed: Union  
Theme: Historical settlement pattern

**Historical information:**

**Heritage Status:**

Previous status under National Monuments Act:

Current status under National Heritage Resources Act: Older than 60  
Responsible heritage authority: HWC

Significance: Some intrinsic and contextual significance

Constraints and Opportunities:

Heritage Management Recommendations:

Ongoing repair and maintenance  
Formal protection in terms of zoning scheme regulations (Grade 3C)

- Conserve wherever possible
- Retain historical fabric wherever possible (exterior only)
- Conserve and enhance contribution to overall character and streetscape (predominantly public/private interface)
- HWC permit of approval required for any demolition, alteration or change in planning status
- Demolition only to be considered if appropriate adaptive reuses cannot be established

Proposed conservation/Special areas:



Approved grading:

Suggested grading: 3C

**References/Sources:**

**Site name:** Stanford House    Type of resource: Building  
Location: 3419 AD: S, E  
Erf/Farm : 175/  
Address: Longmarket Str Stanford

**Description:**

Materials:  
Associated landscape features:

Original use:  
Current use:  
Landscape type:  
Design/Style:  
Construction date:  
Historical period in which constructed:  
Theme:

**Historical information:**

**Heritage Status:**

Previous status under National Monuments Act:

Current status under National Heritage Resources Act: Older than 60  
Responsible heritage authority: HWC

Significance:

Constraints and Opportunities:

Heritage Management Recommendations:

Ongoing repair and maintenance  
Formal protection in terms of zoning scheme regulations (Grade 3C)

- Conserve wherever possible
- Retain historical fabric wherever possible (exterior only)
- Conserve and enhance contribution to overall character and streetscape (predominantly public/private interface)
- HWC permit of approval required for any demolition, alteration or change in planning status
- Demolition only to be considered if appropriate adaptive reuses cannot be established

Proposed conservation/Special areas:



Approved grading:

Suggested grading: 3C

**References/Sources:**

**Site name:** Stanford House    Type of resource: Building  
**Location:** 3419 AD: S, E  
**Erf/Farm :** 433/  
**Address:** Cnr De Bryn and Longmarket Str Stanford

**Description:**

**Materials:**  
**Associated landscape features:**

**Original use:** Residential  
**Current use:** Villa  
**Landscape type:** Continuing  
**Design/Style:**  
**Construction date:** Early 20th century  
**Historical period in which constructed:** Union  
**Theme:** Historical settlement pattern

**Historical information:**

**Heritage Status:**

Previous status under National Monuments Act:

Current status under National Heritage Resources Act: Older than 60  
Responsible heritage authority: HWC

Significance: Some intrinsic and contextual significance

Constraints and Opportunities:

Heritage Management Recommendations:

Ongoing repair and maintenance  
Formal protection in terms of zoning scheme regulations (Grade 3C)

- Conserve wherever possible
- Retain historical fabric wherever possible (exterior only)
- Conserve and enhance contribution to overall character and streetscape (predominantly public/private interface)
- HWC permit of approval required for any demolition, alteration or change in planning status
- Demolition only to be considered if appropriate adaptive reuses cannot be established

Proposed conservation/Special areas:



Approved grading:

Suggested grading: 3C

**References/Sources:**

**Site name:** Stanford House    Type of resource: Building  
Location: 3419 AD: S, E  
Erf/Farm : 171/  
Address: Longmarket Str Stanford

**Description:**

Materials:  
Associated landscape features:

Original use:  
Current use:  
Landscape type:  
Design/Style:  
Construction date:  
Historical period in which constructed:  
Theme:

**Historical information:**

**Heritage Status:**

Previous status under National Monuments Act:

Current status under National Heritage Resources Act: Older than 60  
Responsible heritage authority: HWC

Approved grading:

Suggested grading: 3C

Significance:

Constraints and Opportunities:

Heritage Management Recommendations:

Ongoing repair and maintenance  
Formal protection in terms of zoning scheme regulations (Grade 3C)

- Conserve wherever possible
- Retain historical fabric wherever possible (exterior only)
- Conserve and enhance contribution to overall character and streetscape (predominantly public/private interface)
- HWC permit of approval required for any demolition, alteration or change in planning status
- Demolition only to be considered if appropriate adaptive reuses cannot be established

Proposed conservation/Special areas:

**References/Sources:**

**Site name:** Stanford House    Type of resource: Building  
Location: 3419 AD: S, E  
Erf/Farm : 172/  
Address: 12 De Bryn Str Stanford

**Description:**

Materials:  
Associated landscape features:

Original use: Residential  
Current use: Cottage  
Landscape type: Continuing  
Design/Style:  
Construction date: Early 20th century  
Historical period in which constructed: Union  
Theme: Historical settlement pattern

**Historical information:**

**Heritage Status:**

Previous status under National Monuments Act:

Current status under National Heritage Resources Act: Older than 60  
Responsible heritage authority: HWC

Significance: Some intrinsic and contextual significance

Constraints and Opportunities:

Heritage Management Recommendations:

Ongoing repair and maintenance  
Ongoing repair and maintenance  
Formal protection in terms of zoning scheme regulations (Grade 3C)

- Conserve wherever possible
- Retain historical fabric wherever possible (exterior only)
- Conserve and enhance contribution to overall character and streetscape (predominantly public/private interface)
- HWC permit of approval required for any demolition, alteration or change in planning status
- Demolition only to be considered if appropriate adaptive reuses cannot be established

Proposed conservation/Special areas:



Approved grading:

Suggested grading: 3C

**References/Sources:**

**Site name:** Stanford House    Type of resource: Building  
Location: 3419 AD: S, E  
Erf/Farm : 132/  
Address: Cnr Bezuidenhout and de Bryn Str Stanford

**Description:**

Materials: Brick; Corrugated iron  
Associated landscape features:

Original use: Residential  
Current use: Cottage  
Landscape type: Continuing  
Design/Style:  
Construction date: Early 20th century  
Historical period in which constructed: Union  
Theme: Historical settlement pattern

**Historical information:**

**Heritage Status:**

Previous status under National Monuments Act:

Current status under National Heritage Resources Act: Older than 60  
Responsible heritage authority: HWC

Significance:

Constraints and Opportunities:

Heritage Management Recommendations:

Ongoing repair and maintenance  
Formal protection in terms of zoning scheme regulations (Grade 3C)

- Conserve wherever possible
- Retain historical fabric wherever possible (exterior only)
- Conserve and enhance contribution to overall character and streetscape (predominantly public/private interface)
- HWC permit of approval required for any demolition, alteration or change in planning status
- Demolition only to be considered if appropriate adaptive reuses cannot be established

Proposed conservation/Special areas:



Approved grading:

Suggested grading: 3C

**References/Sources:**

**Site name:** Stanford House    Type of resource: Building  
Location: 3419 AD: S, E  
Erf/Farm : 176/  
Address: Bezuidenhout Str Stanford

**Description:**

Freestanding villa with bull-nosed verandah protruding gable ended bay.

Materials:

Associated landscape features:

Original use:

Current use:

Landscape type:

Design/Style:

Construction date:

Historical period in which constructed:

Theme:

**Historical information:**

**Heritage Status:**

Previous status under National Monuments Act:

Current status under National Heritage Resources Act: Older than 60

Responsible heritage authority: HWC

Approved grading:

Suggested grading: 3C

Significance: Historical, contextual significance. Relatively intact and representative. Some contribution to streetscape.

Constraints and Opportunities:

Heritage Management Recommendations:

Ongoing repair and maintenance

Formal protection in terms of zoning scheme regulations (Grade 3C)

- Conserve wherever possible
- Retain historical fabric wherever possible (exterior only)
- Conserve and enhance contribution to overall character and streetscape (predominantly public/private interface)
- HWC permit of approval required for any demolition, alteration or change in planning status
- Demolition only to be considered if appropriate adaptive reuses cannot be established



Proposed conservation/Special areas:

**References/Sources:**

**Site name:** Stanford House    Type of resource: Building  
Location: 3419 AD: S, E  
Erf/Farm : 283/  
Address: Cnr Morton and Daneel Str Stanford

**Description:**

Materials:  
Associated landscape features:

Original use: Residential  
Current use: Cottage  
Landscape type: Continuing  
Design/Style: Vernacular  
Construction date: Early 20th century  
Historical period in which constructed: Union  
Theme: Historical settlement pattern

**Historical information:**

**Heritage Status:**

Previous status under National Monuments Act:

Current status under National Heritage Resources Act: Older than 60  
Responsible heritage authority: HWC

Significance: Some intrinsic and contextural significance

Constraints and Opportunities:

Heritage Management Recommendations:

Ongoing repair and maintenance  
Formal protection in terms of zoning scheme regulations (Grade 3C)

- Conserve wherever possible
- Retain historical fabric wherever possible (exterior only)
- Conserve and enhance contribution to overall character and streetscape (predominantly public/private interface)
- HWC permit of approval required for any demolition, alteration or change in planning status
- Demolition only to be considered if appropriate adaptive reuses cannot be established

Proposed conservation/Special areas:



Approved grading:

Suggested grading: 3C

**References/Sources:**

**Site name:** Stanford House    Type of resource: Building  
Location: 3419 AD: S, E  
Erf/Farm : 274/  
Address: Bezuidenhout Str Stanford

**Description:**

Materials:  
Associated landscape features:

Original use: Residential  
Current use: Cottage  
Landscape type: Continuing  
Design/Style: Vernacular  
Construction date: Early 20th century  
Historical period in which constructed: Union  
Theme: Historical settlement pattern

**Historical information:**

**Heritage Status:**

Previous status under National Monuments Act:

Current status under National Heritage Resources Act: Older than 60  
Responsible heritage authority: HWC

Significance: Some intrinsic and contextual significance

Constraints and Opportunities:

Heritage Management Recommendations:

Ongoing repair and maintenance  
Formal protection in terms of zoning scheme regulations (Grade 3C)

- Conserve wherever possible
- Retain historical fabric wherever possible (exterior only)
- Conserve and enhance contribution to overall character and streetscape (predominantly public/private interface)
- HWC permit of approval required for any demolition, alteration or change in planning status
- Demolition only to be considered if appropriate adaptive reuses cannot be established

Proposed conservation/Special areas:



Approved grading:

Suggested grading: 3C

**References/Sources:**

**Site name:** Stanford House    Type of resource: Building  
Location: 3419 AD: S, E  
Erf/Farm : 188/  
Address: 28 Bezuidenhout Str Stanford

**Description:**

Materials:  
Associated landscape features:

Original use: Residential  
Current use: Cottage  
Landscape type: Continuing  
Design/Style: Vernacular  
Construction date: Early 20th century  
Historical period in which constructed: Union  
Theme: Historical settlement pattern

**Historical information:**

**Heritage Status:**

Previous status under National Monuments Act:

Current status under National Heritage Resources Act: Older than 60  
Responsible heritage authority: HWC

Significance: Some intrinsic and contextual significance

Constraints and Opportunities:

Heritage Management Recommendations:

Ongoing repair and maintenance  
Formal protection in terms of zoning scheme regulations (Grade 3C)

- Conserve wherever possible
- Retain historical fabric wherever possible (exterior only)
- Conserve and enhance contribution to overall character and streetscape (predominantly public/private interface)
- HWC permit of approval required for any demolition, alteration or change in planning status
- Demolition only to be considered if appropriate adaptive reuses cannot be established

Proposed conservation/Special areas:



Approved grading:

Suggested grading: 3C

**References/Sources:**

**Site name:** Stanford House    Type of resource: Building  
**Location:** 3419 AD: S, E  
**Erf/Farm :** 168/  
**Address:** Shortmarket Str Stanford

**Description:**

**Materials:** Brick; corrugated iron  
**Associated landscape features:**

**Original use:** Residential  
**Current use:** Cottage  
**Landscape type:** Continuing  
**Design/Style:** Vernacular  
**Construction date:** Early 20th century  
**Historical period in which constructed:** Union  
**Theme:** Historical settlement pattern

**Historical information:**

**Heritage Status:**

Previous status under National Monuments Act:

Current status under National Heritage Resources Act: Older than 60  
Responsible heritage authority: HWC

Significance: Some intrinsic and contextual significance

Constraints and Opportunities:

Heritage Management Recommendations:

Ongoing repair and maintenance  
Formal protection in terms of zoning scheme regulations (Grade 3C)

- Conserve wherever possible
- Retain historical fabric wherever possible (exterior only)
- Conserve and enhance contribution to overall character and streetscape (predominantly public/private interface)
- HWC permit of approval required for any demolition, alteration or change in planning status
- Demolition only to be considered if appropriate adaptive reuses cannot be established

Proposed conservation/Special areas:



Approved grading:

Suggested grading: 3C

**References/Sources:**

**Site name:** Stanford House    Type of resource: Building  
Location: 3419 AD: S, E  
Erf/Farm : 1015/  
Address: 37 Shortmarket Str Stanford

**Description:**

Materials: Brick; Corrugated iron  
Associated landscape features:

Original use: Residential  
Current use: Villa  
Landscape type: Continuing  
Design/Style: Cape Revival  
Construction date: Early 20th century  
Historical period in which constructed: Union  
Theme: Historical settlement pattern

**Historical information:**

**Heritage Status:**

Previous status under National Monuments Act:

Current status under National Heritage Resources Act: Older than 60  
Responsible heritage authority: HWC

Significance: Some intrinsic and contextual significance

Constraints and Opportunities:

Heritage Management Recommendations:

Ongoing repair and maintenance  
Formal protection in terms of zoning scheme regulations (Grade 3C)

- Conserve wherever possible
- Retain historical fabric wherever possible (exterior only)
- Conserve and enhance contribution to overall character and streetscape (predominantly public/private interface)
- HWC permit of approval required for any demolition, alteration or change in planning status
- Demolition only to be considered if appropriate adaptive reuses cannot be established

Proposed conservation/Special areas:



Approved grading:

Suggested grading: 3C

**References/Sources:**

**Site name:** Stanford House    Type of resource: Building  
Location: 3419 AD: S, E  
Erf/Farm : 167/  
Address: Shortmarket Str Stanford

**Description:**

Materials: Brick; corrugated iron  
Associated landscape features:

Original use: Residential  
Current use: Cottage  
Landscape type: Continuing  
Design/Style: Vernacular  
Construction date: Early 20th century  
Historical period in which constructed: Union  
Theme: Historical settlement pattern

**Historical information:**

**Heritage Status:**

Previous status under National Monuments Act:

Current status under National Heritage Resources Act: Older than 60  
Responsible heritage authority: HWC

Significance: Some intrinsic and contextual significance

Constraints and Opportunities:

Heritage Management Recommendations:

Ongoing repair and maintenance  
Formal protection in terms of zoning scheme regulations (Grade 3C)

- Conserve wherever possible
- Retain historical fabric wherever possible (exterior only)
- Conserve and enhance contribution to overall character and streetscape (predominantly public/private interface)
- HWC permit of approval required for any demolition, alteration or change in planning status
- Demolition only to be considered if appropriate adaptive reuses cannot be established

Proposed conservation/Special areas:



Approved grading:

Suggested grading: 3C

**References/Sources:**

**Site name:** Stanford House    Type of resource: Building  
**Location:** 3419 AD: S, E  
**Erf/Farm :** 168/  
**Address:** Cnr De Bryn and Shortmarket Str Stanford

**Description:**

**Materials:**  
**Associated landscape features:**

**Original use:** Dwelling  
**Current use:** Cottage  
**Landscape type:** Continuing  
**Design/Style:** Vernacular  
**Construction date:** Early 20th century  
**Historical period in which constructed:** Union  
**Theme:** Historical settlement pattern

**Historical information:**

**Heritage Status:**

Previous status under National Monuments Act:

Current status under National Heritage Resources Act: Older than 60  
Responsible heritage authority: HWC

Significance: Some contextual significance

Constraints and Opportunities:

Heritage Management Recommendations:

Ongoing repair and maintenance  
Formal protection in terms of zoning scheme regulations (Grade 3C)

- Conserve wherever possible
- Retain historical fabric wherever possible (exterior only)
- Conserve and enhance contribution to overall character and streetscape (predominantly public/private interface)
- HWC permit of approval required for any demolition, alteration or change in planning status
- Demolition only to be considered if appropriate adaptive reuses cannot be established

Proposed conservation/Special areas:



Approved grading:

Suggested grading: 3C

**References/Sources:**

**Site name:** Stanford House    Type of resource: Building  
**Location:** 3419 AD: S, E  
**Erf/Farm :** 93/  
**Address:** Shortmarket Str Stanford

**Description:**

**Materials:** Brick; Corrugated iron  
**Associated landscape features:**

**Original use:** Residential  
**Current use:** Cottage  
**Landscape type:** Continuing  
**Design/Style:** Vernacular  
**Construction date:** Early 20th century  
**Historical period in which constructed:** Union  
**Theme:** Historical settlement pattern

**Historical information:**

**Heritage Status:**

Previous status under National Monuments Act:

Current status under National Heritage Resources Act: Older than 60  
Responsible heritage authority: HWC

Significance:

Constraints and Opportunities:

Heritage Management Recommendations:

Ongoing repair and maintenance  
Formal protection in terms of zoning scheme regulations (Grade 3C)

- Conserve wherever possible
- Retain historical fabric wherever possible (exterior only)
- Conserve and enhance contribution to overall character and streetscape (predominantly public/private interface)
- HWC permit of approval required for any demolition, alteration or change in planning status
- Demolition only to be considered if appropriate adaptive reuses cannot be established

Proposed conservation/Special areas:



Approved grading:

Suggested grading: 3C

**References/Sources:**

**Site name:** Stanford House    Type of resource: Building  
Location: 3419 AD: S, E  
Erf/Farm : RE 94/  
Address: Shortmarket Str Stanford

**Description:**

Materials:  
Associated landscape features:

Original use:  
Current use:  
Landscape type:  
Design/Style:  
Construction date:  
Historical period in which constructed:  
Theme:

**Historical information:**

**Heritage Status:**

Previous status under National Monuments Act:

Current status under National Heritage Resources Act: Older than 60  
Responsible heritage authority: HWC

Approved grading:

Suggested grading: 3C

Significance:

Constraints and Opportunities:

Heritage Management Recommendations:

Ongoing repair and maintenance  
Formal protection in terms of zoning scheme regulations (Grade 3C)

- Conserve wherever possible
- Retain historical fabric wherever possible (exterior only)
- Conserve and enhance contribution to overall character and streetscape (predominantly public/private interface)
- HWC permit of approval required for any demolition, alteration or change in planning status
- Demolition only to be considered if appropriate adaptive reuses cannot be established

Proposed conservation/Special areas:

**References/Sources:**

**Site name:** Stanford House    Type of resource: Building  
Location: 3419 AD: S, E  
Erf/Farm : 306/  
Address: Church Str Stanford

**Description:**

Materials: Brick; corrugated iron  
Associated landscape features:

Original use: Residential  
Current use: Cottage  
Landscape type: Continuing  
Design/Style: Vernacular  
Construction date: Late 19th/Early 20th century  
Historical period in which constructed: Union  
Theme: Historical settlement pattern

**Historical information:**

**Heritage Status:**

Previous status under National Monuments Act:

Current status under National Heritage Resources Act: Older than 60  
Responsible heritage authority: HWC

Significance:

Constraints and Opportunities:

Heritage Management Recommendations:

Ongoing repair and maintenance  
Formal protection in terms of zoning scheme regulations (Grade 3C)

- Conserve wherever possible
- Retain historical fabric wherever possible (exterior only)
- Conserve and enhance contribution to overall character and streetscape (predominantly public/private interface)
- HWC permit of approval required for any demolition, alteration or change in planning status
- Demolition only to be considered if appropriate adaptive reuses cannot be established

Proposed conservation/Special areas:



Approved grading:

Suggested grading: 3C

**References/Sources:**

**Site name:** Stanford House    Type of resource: Building  
Location: 3419 AD: S, E  
Erf/Farm : 84/  
Address: Church Str Stanford

**Description:**

Materials: Brick; Corrugated iron  
Associated landscape features:

Original use: Residential  
Current use: Cottage  
Landscape type: Continuing  
Design/Style: Vernacular  
Construction date: Early 20th century  
Historical period in which constructed: Union  
Theme: Historical settlement pattern

**Historical information:**

**Heritage Status:**

Previous status under National Monuments Act:

Current status under National Heritage Resources Act: Older than 60  
Responsible heritage authority: HWC

Significance: Some intrinsic and contextual significance

Constraints and Opportunities:

Heritage Management Recommendations:

Ongoing repair and maintenance  
Formal protection in terms of zoning scheme regulations (Grade 3C)

- Conserve wherever possible
- Retain historical fabric wherever possible (exterior only)
- Conserve and enhance contribution to overall character and streetscape (predominantly public/private interface)
- HWC permit of approval required for any demolition, alteration or change in planning status
- Demolition only to be considered if appropriate adaptive reuses cannot be established

Proposed conservation/Special areas:



Approved grading:

Suggested grading: 3C

**References/Sources:**

**Site name:** Stanford House    Type of resource: Building  
Location: 3419 AD: S, E  
Erf/Farm : 99/  
Address: 40 Shortmarket Str Stanford

**Description:**

Materials: Brick; Corrugated iron  
Associated landscape features:

Original use: Residential  
Current use: Cottage  
Landscape type: Continuing  
Design/Style: Vernacular  
Construction date: Early 20th century  
Historical period in which constructed: Union  
Theme: Historical settlement pattern

**Historical information:**

**Heritage Status:**

Previous status under National Monuments Act:

Current status under National Heritage Resources Act: Older than 60  
Responsible heritage authority: HWC

Significance: Some intrinsic and contextual significance

Constraints and Opportunities:

Heritage Management Recommendations:

Ongoing repair and maintenance  
Formal protection in terms of zoning scheme regulations (Grade 3C)

- Conserve wherever possible
- Retain historical fabric wherever possible (exterior only)
- Conserve and enhance contribution to overall character and streetscape (predominantly public/private interface)
- HWC permit of approval required for any demolition, alteration or change in planning status
- Demolition only to be considered if appropriate adaptive reuses cannot be established

Proposed conservation/Special areas:



Approved grading:

Suggested grading: 3C

**References/Sources:**

**Site name:** Stanford Gallery and Art Café      Type of resource: Building  
Location: 3419 AD: S, E  
Erf/Farm : 155/  
Address: Cnr Queen Victoria and Longmarket Str Stanford

**Description:**

Materials: Brick; Corrugated iron  
Associated landscape features:

Original use: Residential  
Current use: Villa  
Landscape type: Continuing  
Design/Style:  
Construction date: 1920  
Historical period in which constructed: Union  
Theme: Historical settlement pattern

**Historical information:**

**Heritage Status:**

Previous status under National Monuments Act:

Current status under National Heritage Resources Act: Older than 60  
Responsible heritage authority: HWC

Significance: Some intrinsic and contextual significance

Constraints and Opportunities:

Heritage Management Recommendations:

Ongoing repair and maintenance  
Formal protection in terms of zoning scheme regulations (Grade 3C)

- Conserve wherever possible
- Retain historical fabric wherever possible (exterior only)
- Conserve and enhance contribution to overall character and streetscape (predominantly public/private interface)
- HWC permit of approval required for any demolition, alteration or change in planning status
- Demolition only to be considered if appropriate adaptive reuses cannot be established

Proposed conservation/Special areas:



Approved grading:

Suggested grading: 3C

**References/Sources:**

**Site name:** Stanford House    Type of resource: Building  
Location: 3419 AD: S, E  
Erf/Farm : 302/  
Address: Stanford

**Description:**

Materials:  
Associated landscape features:

Original use: Residential  
Current use: Villa  
Landscape type: Continuing  
Design/Style:  
Construction date: Early 20th century  
Historical period in which constructed: Union  
Theme: Historic settlement pattern

**Historical information:**

**Heritage Status:**

Previous status under National Monuments Act:

Current status under National Heritage Resources Act: Older than 60  
Responsible heritage authority: HWC

Significance:

Constraints and Opportunities:

Heritage Management Recommendations:

Ongoing repair and maintenance  
Formal protection in terms of zoning scheme regulations (Grade 3C)

- Conserve wherever possible
- Retain historical fabric wherever possible (exterior only)
- Conserve and enhance contribution to overall character and streetscape (predominantly public/private interface)
- HWC permit of approval required for any demolition, alteration or change in planning status
- Demolition only to be considered if appropriate adaptive reuses cannot be established

Proposed conservation/Special areas:



Approved grading:

Suggested grading: 3C

**References/Sources:**

**Site name:** Stanford House    Type of resource: Building  
**Location:** 3419 AD: S, E  
**Erf/Farm :** 144/  
**Address:** Shortmarket Str Stanford

**Description:**

**Materials:**  
**Associated landscape features:**

**Original use:** Residential  
**Current use:** Cottage  
**Landscape type:** Continuing  
**Design/Style:** Vernacular  
**Construction date:** Early 20th century  
**Historical period in which constructed:** Union  
**Theme:** Historical settlement pattern

**Historical information:**

The garage on Du Toit street was the Stanford mortuary. The house belonged to the undertaker.



**Heritage Status:**

Previous status under National Monuments Act:

Current status under National Heritage Resources Act: Older than 60  
Responsible heritage authority: HWC

Approved grading:

Suggested grading: 3C

Significance:

Constraints and Opportunities:

Heritage Management Recommendations:

Ongoing repair and maintenance  
Formal protection in terms of zoning scheme regulations (Grade 3C)

- Conserve wherever possible
- Retain historical fabric wherever possible (exterior only)
- Conserve and enhance contribution to overall character and streetscape (predominantly public/private interface)
- HWC permit of approval required for any demolition, alteration or change in planning status
- Demolition only to be considered if appropriate adaptive reuses cannot be established

Proposed conservation/Special areas:

**References/Sources:**

**Site name:** Mariana's Barn      Type of resource: Building  
Location: 3419 AD: S, E  
Erf/Farm : 415/  
Address: Du Toit Str Stanford

**Description:**

Materials: Brick; Corrugated iron  
Associated landscape features:

Original use: Residential  
Current use: Verandah cottage  
Landscape type: Continuing  
Design/Style: Vernacular  
Construction date: Late 19th/early 20th century  
Historical period in which constructed: Union  
Theme: Historic settlement pattern  
Tourism

**Historical information:**

**Heritage Status:**

Previous status under National Monuments Act:

Current status under National Heritage Resources Act: Older than 60  
Responsible heritage authority: HWC

Significance: Some intrinsic and contextual significance

Constraints and Opportunities:

Heritage Management Recommendations:

Ongoing repair and maintenance  
Formal protection in terms of zoning scheme regulations (Grade 3C)

- Conserve wherever possible
- Retain historical fabric wherever possible (exterior only)
- Conserve and enhance contribution to overall character and streetscape (predominantly public/private interface)
- HWC permit of approval required for any demolition, alteration or change in planning status
- Demolition only to be considered if appropriate adaptive reuses cannot be established



Approved grading:

Suggested grading: 3C

Proposed conservation/Special areas:

**References/Sources:**

**Site name:** Stanford House    Type of resource: Building  
**Location:** 3419 AD: S, E  
**Erf/Farm :** 416/  
**Address:** Du Toit Str Stanford

**Description:**

**Materials:** Brick; Corrugated iron  
**Associated landscape features:**

**Original use:** Residential  
**Current use:** Vernadah cottage  
**Landscape type:** Continuing  
**Design/Style:** Vernacular  
**Construction date:** Early 20th century  
**Historical period in which constructed:** Union  
**Theme:** Historical settlement pattern

**Historical information:**

**Heritage Status:**

Previous status under National Monuments Act:

Current status under National Heritage Resources Act: Older than 60  
Responsible heritage authority: HWC

Significance: Some intrinsic and contextual significance

Constraints and Opportunities:

Heritage Management Recommendations:

Ongoing repair and maintenance  
Formal protection in terms of zoning scheme regulations (Grade 3C)

- Conserve wherever possible
- Retain historical fabric wherever possible (exterior only)
- Conserve and enhance contribution to overall character and streetscape (predominantly public/private interface)
- HWC permit of approval required for any demolition, alteration or change in planning status
- Demolition only to be considered if appropriate adaptive reuses cannot be established

Proposed conservation/Special areas:



Approved grading:

Suggested grading: 3C

**References/Sources:**

**Site name:** Stanford House    Type of resource: Building  
Location: 3419 AD: S, E  
Erf/Farm : 417/  
Address: 11 Du Toit Str Stanford

**Description:**

Materials: Brick; Corrugated iron  
Associated landscape features:

Original use: Residential  
Current use: Verandah cottage  
Landscape type: Continuing  
Design/Style: Vernacular  
Construction date: Early 20th century  
Historical period in which constructed: Union  
Theme: Historical settlement pattern

**Historical information:**

**Heritage Status:**

Previous status under National Monuments Act:

Current status under National Heritage Resources Act: Older than 60  
Responsible heritage authority: HWC

Significance: Some intrinsic and contextual significance

Constraints and Opportunities:

Heritage Management Recommendations:

Ongoing repair and maintenance  
Formal protection in terms of zoning scheme regulations (Grade 3C)

- Conserve wherever possible
- Retain historical fabric wherever possible (exterior only)
- Conserve and enhance contribution to overall character and streetscape (predominantly public/private interface)
- HWC permit of approval required for any demolition, alteration or change in planning status
- Demolition only to be considered if appropriate adaptive reuses cannot be established

Proposed conservation/Special areas:



Approved grading:

Suggested grading: 3C

**References/Sources:**

**Site name:** Stanford House    Type of resource: Building  
**Location:** 3419 AD: S, E  
**Erf/Farm :** 420/  
**Address:** Cnr Du Toit and Longmarket Str Stanford

**Description:**

**Materials:** Brick; corrugated iron  
**Associated landscape features:**

**Original use:** Residential  
**Current use:** Cottage  
**Landscape type:** Continuing  
**Design/Style:** Vernacular  
**Construction date:** Early 20th century  
**Historical period in which constructed:** Union  
**Theme:** Historic settlement pattern

**Historical information:**

**Heritage Status:**

Previous status under National Monuments Act:

Current status under National Heritage Resources Act: Older than 60  
Responsible heritage authority: HWC

Significance: Some intrinsic and contextual significance

Constraints and Opportunities:

Heritage Management Recommendations:

Ongoing repair and maintenance  
Formal protection in terms of zoning scheme regulations (Grade 3C)

- Conserve wherever possible
- Retain historical fabric wherever possible (exterior only)
- Conserve and enhance contribution to overall character and streetscape (predominantly public/private interface)
- HWC permit of approval required for any demolition, alteration or change in planning status
- Demolition only to be considered if appropriate adaptive reuses cannot be established

Proposed conservation/Special areas:



Approved grading:

Suggested grading: 3C

**References/Sources:**

**Site name:** Stanford House    Type of resource: Building  
**Location:** 3419 AD: S, E  
**Erf/Farm :** 1011/  
**Address:** Cnr Church and Queen Victoria Str Stanford

**Description:**

**Materials:** Brick; corrugated iron  
**Associated landscape features:**

**Original use:** Residential  
**Current use:** Cottage  
**Landscape type:** Continuing  
**Design/Style:** Vernacular  
**Construction date:** Late 19th century  
**Historical period in which constructed:** British Colonial  
**Theme:** Historical settlement pattern

**Historical information:**

**Heritage Status:**

Previous status under National Monuments Act:

Current status under National Heritage Resources Act: Older than 60  
Responsible heritage authority: HWC

Significance: Some intrinsic and contextual significance

Constraints and Opportunities:

Heritage Management Recommendations:

Ongoing repair and maintenance  
Formal protection in terms of zoning scheme regulations (Grade 3C)

- Conserve wherever possible
- Retain historical fabric wherever possible (exterior only)
- Conserve and enhance contribution to overall character and streetscape (predominantly public/private interface)
- HWC permit of approval required for any demolition, alteration or change in planning status
- Demolition only to be considered if appropriate adaptive reuses cannot be established

Proposed conservation/Special areas:



Approved grading:

Suggested grading: 3C

**References/Sources:**

**Site name:** Stanford House    Type of resource: Building  
Location: 3419 AD: S, E  
Erf/Farm : 380/  
Address: Cnr Du Toit and Vlei Str Stanford

**Description:**

Materials: Brick; Corrugated iron  
Associated landscape features:

Original use: Residential

Current use: Cottage

Landscape type: Continuing

Design/Style:

Construction date: Late 19th century

Historical period in which constructed: British/Union

Theme: Historic settlement pattern

**Historical information:**

**Heritage Status:**

Previous status under National Monuments Act:

Current status under National Heritage Resources Act: Older than 60

Responsible heritage authority: HWC

Significance: Some intrinsic and contextual significance

Constraints and Opportunities:

Heritage Management Recommendations:

Ongoing repair and maintenance

Formal protection in terms of zoning scheme regulations (Grade 3C)

- Conserve wherever possible
- Retain historical fabric wherever possible (exterior only)
- Conserve and enhance contribution to overall character and streetscape (predominantly public/private interface)
- HWC permit of approval required for any demolition, alteration or change in planning status
- Demolition only to be considered if appropriate adaptive reuses cannot be established

Proposed conservation/Special areas:



Approved grading:

Suggested grading: 3C

**References/Sources:**

**Site name:** Stanford House    Type of resource: Building  
**Location:** 3419 AD: S, E  
**Erf/Farm :** 63/  
**Address:** Caledon Str Stanford

**Description:**

3 bay cottage with bakoond to rear. Small attic windows, low boundary wall. Recently restored

**Materials:** Brick; corrugated ron  
**Associated landscape features:**

**Original use:** Residential

**Current use:** Cottage

**Landscape type:** Continuing

**Design/Style:** Vernacular

**Construction date:** Early 20th century

**Historical period in which constructed:** Union

**Theme:** Historic settlement pattern

**Historical information:**

**Heritage Status:**

Previous status under National Monuments Act:

Current status under National Heritage Resources Act: Older than 60

Responsible heritage authority: HWC

Approved grading:

Suggested grading: 3C

Significance:

Constraints and Opportunities: Transformation of agricultural landscape

Heritage Management Recommendations:

Ongoing repair and maintenance

Formal protection in terms of zoning scheme regulations (Grade 3C)

- Conserve wherever possible
- Retain historical fabric wherever possible (exterior only)
- Conserve and enhance contribution to overall character and streetscape (predominantly public/private interface)
- HWC permit of approval required for any demolition, alteration or change in planning status
- Demolition only to be considered if appropriate adaptive reuses cannot be established



Proposed conservation/Special areas:

**References/Sources:**

**Site name:** Stanford House    Type of resource: Building  
**Location:** 3419 AD: S, E  
**Erf/Farm :** 62/  
**Address:** Caledon Str Stanford

**Description:**

4 bay cottage, low plastered boundary wall  
**Materials:** Brick; Corrugated iron  
**Associated landscape features:**

**Original use:** Residential  
**Current use:** Cottage  
**Landscape type:** Continuing  
**Design/Style:** Vernacular  
**Construction date:** Late 19th/Early 20th century  
**Historical period in which constructed:** Union  
**Theme:** Historical settlement pattern

**Historical information:**

**Heritage Status:**

Previous status under National Monuments Act:

Current status under National Heritage Resources Act: Older than 60  
Responsible heritage authority: HWC

Significance: Historical and contextual significance.  
Contributes to the streetscape

Constraints and Opportunities:

Heritage Management Recommendations:

Ongoing repair and maintenance  
Formal protection in terms of zoning scheme regulations (Grade 3C)

- Conserve wherever possible
- Retain historical fabric wherever possible (exterior only)
- Conserve and enhance contribution to overall character and streetscape (predominantly public/private interface)
- HWC permit of approval required for any demolition, alteration or change in planning status
- Demolition only to be considered if appropriate adaptive reuses cannot be established



Approved grading:

Suggested grading: 3C

Proposed conservation/Special areas:

**References/Sources:**

**Site name:** Stanford House    Type of resource: Building  
Location: 3419 AD: S, E  
Erf/Farm : 208/  
Address: Cnr King and Bezuidenhout Str Stanford

**Description:**

Materials: Brick; corrugated iron  
Associated landscape features:

Original use: Residential  
Current use: Cottage  
Landscape type: Continuing  
Design/Style:  
Construction date: Early 20th century  
Historical period in which constructed: Union  
Theme: Historic settlement pattern

**Historical information:**

**Heritage Status:**

Previous status under National Monuments Act:

Current status under National Heritage Resources Act: Older than 60  
Responsible heritage authority: HWC

Significance:

Constraints and Opportunities:

Heritage Management Recommendations:

Ongoing repair and maintenance  
Formal protection in terms of zoning scheme regulations (Grade 3C)

- Conserve wherever possible
- Retain historical fabric wherever possible (exterior only)
- Conserve and enhance contribution to overall character and streetscape (predominantly public/private interface)
- HWC permit of approval required for any demolition, alteration or change in planning status
- Demolition only to be considered if appropriate adaptive reuses cannot be established

Proposed conservation/Special areas:



Approved grading:

Suggested grading: 3C

**References/Sources:**

**Site name:** Stanford House    Type of resource: Building  
Location: 3419 AD: S, E  
Erf/Farm : 2061/  
Address: Longmarket Str Stanford

**Description:**

Materials:  
Associated landscape features:

Original use:  
Current use:  
Landscape type:  
Design/Style:  
Construction date:  
Historical period in which constructed:  
Theme:

**Historical information:**

**Heritage Status:**

Previous status under National Monuments Act:

Current status under National Heritage Resources Act: Older than 60  
Responsible heritage authority: HWC

Approved grading:

Suggested grading: 3C

Significance:

Constraints and Opportunities:

Heritage Management Recommendations:

Ongoing repair and maintenance  
Formal protection in terms of zoning scheme regulations (Grade 3C)

- Conserve wherever possible
- Retain historical fabric wherever possible (exterior only)
- Conserve and enhance contribution to overall character and streetscape (predominantly public/private interface)
- HWC permit of approval required for any demolition, alteration or change in planning status
- Demolition only to be considered if appropriate adaptive reuses cannot be established

Proposed conservation/Special areas:

**References/Sources:**

**Site name:** Stanford House    Type of resource: Building  
Location: 3419 AD: S, E  
Erf/Farm : 212/  
Address: Bezuidenhout Stanford

**Description:**

Materials:  
Associated landscape features:

Original use:  
Current use:  
Landscape type:  
Design/Style:  
Construction date:  
Historical period in which constructed:  
Theme:

**Historical information:**

**Heritage Status:**

Previous status under National Monuments Act:

Current status under National Heritage Resources Act: Older than 60  
Responsible heritage authority: HWC

Approved grading:

Suggested grading: 3C

Significance:

Constraints and Opportunities:

Heritage Management Recommendations:

Ongoing repair and maintenance  
Formal protection in terms of zoning scheme regulations (Grade 3C)

- Conserve wherever possible
- Retain historical fabric wherever possible (exterior only)
- Conserve and enhance contribution to overall character and streetscape (predominantly public/private interface)
- HWC permit of approval required for any demolition, alteration or change in planning status
- Demolition only to be considered if appropriate adaptive reuses cannot be established

Proposed conservation/Special areas:

**References/Sources:**

**Site name:** Stanford House    Type of resource: Building  
Location: 3419 AD: S, E  
Erf/Farm : 257/  
Address: Bezuidenhout Str Stanford

**Description:**

Materials:  
Associated landscape features:

Original use:  
Current use:  
Landscape type:  
Design/Style:  
Construction date:  
Historical period in which constructed:  
Theme:

**Historical information:**

**Heritage Status:**

Previous status under National Monuments Act:

Current status under National Heritage Resources Act: Older than 60  
Responsible heritage authority: HWC

Significance:

Constraints and Opportunities:

Heritage Management Recommendations:

Ongoing repair and maintenance  
Formal protection in terms of zoning scheme regulations (Grade 3C)

- Conserve wherever possible
- Retain historical fabric wherever possible (exterior only)
- Conserve and enhance contribution to overall character and streetscape (predominantly public/private interface)
- HWC permit of approval required for any demolition, alteration or change in planning status
- Demolition only to be considered if appropriate adaptive reuses cannot be established

Proposed conservation/Special areas:



Approved grading:

Suggested grading: 3C

**References/Sources:**

**Site name:** Stanford House    Type of resource: Building  
**Location:** 3419 AD: S, E  
**Erf/Farm :** 118/  
**Address:** Shortmarket Str Stanford

**Description:**

**Materials:**  
**Associated landscape features:**

**Original use:** Residential  
**Current use:** Villa  
**Landscape type:** Continuing  
**Design/Style:**  
**Construction date:** Early 20th century  
**Historical period in which constructed:** Union  
**Theme:**

**Historical information:**

**Heritage Status:**

Previous status under National Monuments Act:

Current status under National Heritage Resources Act: Older than 60  
Responsible heritage authority: HWC

Approved grading:

Suggested grading: 3C

Significance: Some architectural, historical and contextual significance. Not typical of streetscape as set back from street boundary with formal garden.

Constraints and Opportunities:

Heritage Management Recommendations:

Ongoing repair and maintenance  
Formal protection in terms of zoning scheme regulations (Grade 3C)

- Conserve wherever possible
- Retain historical fabric wherever possible (exterior only)
- Conserve and enhance contribution to overall character and streetscape (predominantly public/private interface)
- HWC permit of approval required for any demolition, alteration or change in planning status
- Demolition only to be considered if appropriate adaptive reuses cannot be established

Proposed conservation/Special areas:



**References/Sources:**

**Site name:** Stanford House    Type of resource: Building  
Location: 3419AD: S, E  
Erf/Farm : 67/  
Address: Caledon Str Stanford

**Description:**

Materials:  
Associated landscape features:

Original use: Residential  
Current use: Cottage  
Landscape type: Continuing  
Design/Style:  
Construction date: Early 20th century  
Historical period in which constructed: Union  
Theme: Historic settlement pattern

**Historical information:**

**Heritage Status:**

Previous status under National Monuments Act:

Current status under National Heritage Resources Act:                      Approved grading:                      Suggested grading: 3C  
Responsible heritage authority:

Significance: Some architectural, historical, contextual significance. Contribution to streetscape.

Constraints and Opportunities:

Heritage Management Recommendations:

Ongoing repair and maintenance  
Formal protection in terms of zoning scheme regulations (Grade 3C)

- Conserve wherever possible
- Retain historical fabric wherever possible (exterior only)
- Conserve and enhance contribution to overall character and streetscape (predominantly public/private interface)
- HWC permit of approval required for any demolition, alteration or change in planning status
- Demolition only to be considered if appropriate adaptive reuses cannot be established

Proposed conservation/Special areas:

**References/Sources:**

**Site name:** Stanford House    Type of resource: Building  
Location: 3419AD: S, E  
Erf/Farm : 64/  
Address: Caledon Str Stanford

**Description:**

Materials:  
Associated landscape features:

Original use: Residential  
Current use: Cottage  
Landscape type: Continuing  
Design/Style:  
Construction date: Early 20th century  
Historical period in which constructed: Union  
Theme: Historic settlement pattern

**Historical information:**

**Heritage Status:**

Previous status under National Monuments Act:

Current status under National Heritage Resources Act:                      Approved grading:                      Suggested grading: 3C  
Responsible heritage authority:

Significance: Some architectural, historical, contextual significance. Contribution to streetscape.

Constraints and Opportunities:

Heritage Management Recommendations:

Ongoing repair and maintenance  
Formal protection in terms of zoning scheme regulations (Grade 3C)

- Conserve wherever possible
- Retain historical fabric wherever possible (exterior only)
- Conserve and enhance contribution to overall character and streetscape (predominantly public/private interface)
- HWC permit of approval required for any demolition, alteration or change in planning status
- Demolition only to be considered if appropriate adaptive reuses cannot be established

Proposed conservation/Special areas:

**References/Sources:**

**Site name:** Stanford House    Type of resource: Building  
Location: 3419 AD: S, E  
Erf/Farm : 221/  
Address: 4 Bezuidenhout Str Stanford

**Description:**

Materials: Brick; Corrugated iron  
Associated landscape features:

Original use: Residential

Current use: Cottage

Landscape type:

Design/Style:

Construction date: Early 20th century

Historical period in which constructed: Union

Theme: Historic settlement pattern

**Historical information:**

**Heritage Status:**

Previous status under National Monuments Act:

Current status under National Heritage Resources Act: Older than 60

Responsible heritage authority: HWC

Significance: Contributes to streetscape

Constraints and Opportunities:

Heritage Management Recommendations:

Ongoing repair and maintenance

Formal protection in terms of zoning scheme regulations (Grade 3C)

- Conserve wherever possible
- Retain historical fabric wherever possible (exterior only)
- Conserve and enhance contribution to overall character and streetscape (predominantly public/private interface)
- HWC permit of approval required for any demolition, alteration or change in planning status
- Demolition only to be considered if appropriate adaptive reuses cannot be established

Proposed conservation/Special areas:



Approved grading:

Suggested grading: 3C

**References/Sources:**

**Site name:** Stanford House    Type of resource: Building  
Location: 3419 AD: S, E  
Erf/Farm : 145/  
Address: Cnr Du Toit and Shortmarket Str Stanford

**Description:**

Villa with hipped roof, with partly enclosed verandah  
Materials: Brick; Corrugated iron  
Associated landscape features:

Original use: Residential

Current use: Villa

Landscape type:

Design/Style:

Construction date: Early 20th century

Historical period in which constructed: Union

Theme: Historic settlement pattern

**Historical information:**

**Heritage Status:**

Previous status under National Monuments Act:

Current status under National Heritage Resources Act: Older than 60

Responsible heritage authority: HWC

Significance: Positive contribution to the streetscape

Constraints and Opportunities:

Heritage Management Recommendations:

Ongoing repair and maintenance

Formal protection in terms of zoning scheme regulations (Grade 3C)

- Conserve wherever possible
- Retain historical fabric wherever possible (exterior only)
- Conserve and enhance contribution to overall character and streetscape (predominantly public/private interface)
- HWC permit of approval required for any demolition, alteration or change in planning status
- Demolition only to be considered if appropriate adaptive reuses cannot be established



Approved grading:

Suggested grading: 3C

Proposed conservation/Special areas:

**References/Sources:**

**Site name:** Stanford House    Type of resource: Building  
**Location:** 3419 AD: S, E  
**Erf/Farm :** 119/  
**Address:** 30 Cnr Du Toit and Shortmarket Str Stanford

**Description:**

L shaped building, verandah onto Shortmarket Street with masonry columns, low boundary wall, stoepkamer.  
**Materials:** Brick; Corrugated iron  
**Associated landscape features:**

**Original use:** Residential  
**Current use:** Terrace housing  
**Landscape type:** Continuing  
**Design/Style:** Vernacular  
**Construction date:** Late 19th century  
**Historical period in which constructed:** Union  
**Theme:** Historical settlement pattern

**Historical information:**

**Heritage Status:**

Previous status under National Monuments Act:

Current status under National Heritage Resources Act: Older than 60  
Responsible heritage authority: HWC

Approved grading:

Suggested grading: 3C

**Significance:** Architectural, historical, contextual significance. Intact and representative; positive contribution to streetscape.

**Constraints and Opportunities:**

**Heritage Management Recommendations:**

Ongoing repair and maintenance  
Formal protection in terms of zoning scheme regulations (Grade 3C)

- Conserve wherever possible
- Retain historical fabric wherever possible (exterior only)
- Conserve and enhance contribution to overall character and streetscape (predominantly public/private interface)
- HWC permit of approval required for any demolition, alteration or change in planning status
- Demolition only to be considered if appropriate adaptive reuses cannot be established



Proposed conservation/Special areas:

**References/Sources:**

**Site name:** Stanford House    Type of resource: Building  
Location: 3419 AD: S, E  
Erf/Farm : 102/  
Address: Shortmarket Str Stanford

**Description:**

Materials: Brick; corrugated iron  
Associated landscape features:

Original use: Residential

Current use: Cottage

Landscape type: Continuing

Design/Style:

Construction date: late 19th century

Historical period in which constructed: British Colonial

Theme: Historic settlement pattern

**Historical information:**

**Heritage Status:**

Previous status under National Monuments Act:

Current status under National Heritage Resources Act: Older than 60

Responsible heritage authority: HWC

Significance: Positive contribution to the streetscape

Constraints and Opportunities:

Heritage Management Recommendations:

Ongoing repair and maintenance

Formal protection in terms of zoning scheme regulations (Grade 3C)

- Conserve wherever possible
- Retain historical fabric wherever possible (exterior only)
- Conserve and enhance contribution to overall character and streetscape (predominantly public/private interface)
- HWC permit of approval required for any demolition, alteration or change in planning status
- Demolition only to be considered if appropriate adaptive reuses cannot be established

Proposed conservation/Special areas:



Approved grading:

Suggested grading: 3C

**References/Sources:**

**Site name:** Stanford House    Type of resource: Building  
Location: 3419 AD: S, E  
Erf/Farm : 94/  
Address: 42 Shortmarket Str Stanford

**Description:**

Materials: Brick; Corrugated iron  
Associated landscape features:

Original use: Residential  
Current use: Cottage  
Landscape type: Continuing  
Design/Style: Vernacular  
Construction date: Early 20th century  
Historical period in which constructed: Union  
Theme: Historical settlement pattern

**Historical information:**

**Heritage Status:**

Previous status under National Monuments Act:

Current status under National Heritage Resources Act: Older than 60  
Responsible heritage authority: HWC

Significance:

Constraints and Opportunities:

Heritage Management Recommendations:

Ongoing repair and maintenance  
Formal protection in terms of zoning scheme regulations (Grade 3C)

- Conserve wherever possible
- Retain historical fabric wherever possible (exterior only)
- Conserve and enhance contribution to overall character and streetscape (predominantly public/private interface)
- HWC permit of approval required for any demolition, alteration or change in planning status
- Demolition only to be considered if appropriate adaptive reuses cannot be established

Proposed conservation/Special areas:



Approved grading:

Suggested grading: 3C

**References/Sources:**

**Site name:** Stanford House    Type of resource: Building  
Location: 3419 AD: S, E  
Erf/Farm : 251/  
Address: 16 Daneel Str Stanford

**Description:**

Materials: Brick; corrugated asbestos  
Associated landscape features:

Original use: Residential  
Current use: Cottage  
Landscape type: Continuing  
Design/Style:  
Construction date: Late 19th/Early 20th century  
Historical period in which constructed: Union  
Theme: Historic settlement pattern

**Historical information:**

**Heritage Status:**

Previous status under National Monuments Act:

Current status under National Heritage Resources Act: Older than 60  
Responsible heritage authority: HWC

Significance: Positive contribution to the streetscape

Constraints and Opportunities:

Heritage Management Recommendations:

Ongoing repair and maintenance  
Formal protection in terms of zoning scheme regulations (Grade 3C)

- Conserve wherever possible
- Retain historical fabric wherever possible (exterior only)
- Conserve and enhance contribution to overall character and streetscape (predominantly public/private interface)
- HWC permit of approval required for any demolition, alteration or change in planning status
- Demolition only to be considered if appropriate adaptive reuses cannot be established

Proposed conservation/Special areas:



Approved grading:

Suggested grading: 3C

**References/Sources:**

**Site name:** Die Bron School    Type of resource: Building  
**Location:** 3419 AD: S, E  
**Erf/Farm :** 295/  
**Address:** School Str Stanford

**Description:**

“Die Bron” shaped structure with colonnade, placed on raised plinth.

**Materials:**

**Associated landscape features:**

Original use: Educational

Current use: Hall

Landscape type: Continuing

Design/Style:

Construction date: 1920s

Historical period in which constructed: Union

Theme: Education

Apartheid

**Historical information:**

**Heritage Status:**

Previous status under National Monuments Act:

Current status under National Heritage Resources Act: Older than 60

Responsible heritage authority: HWC

Approved grading:

Suggested grading: 3C

Significance: Social, historical significance. Demonstration of race-related policies and dislocation of educational facilities from the centre of Stanford to 'Die Skema'

Constraints and Opportunities:

Heritage Management Recommendations:

Ongoing repair and maintenance

Formal protection in terms of zoning scheme regulations (Grade 3C)

- Conserve wherever possible
- Retain historical fabric wherever possible (exterior only)
- Conserve and enhance contribution to overall character and streetscape (predominantly public/private interface)
- HWC permit of approval required for any demolition, alteration or change in planning status



- Demolition only to be considered if appropriate adaptive reuses cannot be established

Proposed conservation/Special areas:

**References/Sources:**

**Site name:** Stanford House    Type of resource: Building  
Location: 3419 AD: S, E  
Erf/Farm : 436/  
Address: Stanford

**Description:**

Cottage with low boundary wall  
Materials:  
Associated landscape features:

Original use: Residential  
Current use: Cottage  
Landscape type: Continuing  
Design/Style: Vernacular  
Construction date: Late 19th/early 20th century  
Historical period in which constructed: Union  
Theme: Historical settlement pattern

**Historical information:**

**Heritage Status:**

Previous status under National Monuments Act:

Current status under National Heritage Resources Act: Older than 60  
Responsible heritage authority: HWC

Approved grading:

Suggested grading: 3C

Significance: Historical and contextual significance. Contribution to streetscape

Constraints and Opportunities:

Heritage Management Recommendations:

Ongoing repair and maintenance  
Formal protection in terms of zoning scheme regulations (Grade 3C)

- Conserve wherever possible
- Retain historical fabric wherever possible (exterior only)
- Conserve and enhance contribution to overall character and streetscape (predominantly public/private interface)
- HWC permit of approval required for any demolition, alteration or change in planning status
- Demolition only to be considered if appropriate adaptive reuses cannot be established



Proposed conservation/Special areas:

**References/Sources:**

**Site name:** Stanford House    Type of resource: Building  
Location: 3419 AD: S, E  
Erf/Farm : 1053/  
Address: Cnr Disa and Caledon Str Stanford

**Description:**

Cottage with verandah  
Materials:  
Associated landscape features:

Original use: Residential  
Current use: Cottage  
Landscape type:  
Design/Style: Vernacular  
Construction date: Early 20th century  
Historical period in which constructed: Union  
Theme: Historical settlement pattern

**Historical information:**

**Heritage Status:**

Previous status under National Monuments Act:

Current status under National Heritage Resources Act: Older than 60  
Responsible heritage authority: HWC

Significance:

Constraints and Opportunities:

Heritage Management Recommendations:

Ongoing repair and maintenance  
Formal protection in terms of zoning scheme regulations (Grade 3C)

- Conserve wherever possible
- Retain historical fabric wherever possible (exterior only)
- Conserve and enhance contribution to overall character and streetscape (predominantly public/private interface)
- HWC permit of approval required for any demolition, alteration or change in planning status
- Demolition only to be considered if appropriate adaptive reuses cannot be established



Approved grading:

Suggested grading: 3C

Proposed conservation/Special areas:

**References/Sources:**

**Site name:** Stanford House    Type of resource: Building  
**Location:** 3419 AD: S, E  
**Erf/Farm :** 418/  
**Address:** Stanford

**Description:**

**Materials:** Brick; corrugated iron  
**Associated landscape features:**

**Original use:** Residential  
**Current use:** Cottage  
**Landscape type:** Continuing  
**Design/Style:** Vernacular  
**Construction date:** Early 20th century  
**Historical period in which constructed:** Union  
**Theme:** Historical settlement pattern

**Historical information:**

**Heritage Status:**

Previous status under National Monuments Act:

Current status under National Heritage Resources Act: Older than 60  
Responsible heritage authority: HWC

Significance: Some intrinsic and contextual significance

Constraints and Opportunities:

Heritage Management Recommendations:

Ongoing repair and maintenance  
Formal protection in terms of zoning scheme regulations (Grade 3C)

- Conserve wherever possible
- Retain historical fabric wherever possible (exterior only)
- Conserve and enhance contribution to overall character and streetscape (predominantly public/private interface)
- HWC permit of approval required for any demolition, alteration or change in planning status
- Demolition only to be considered if appropriate adaptive reuses cannot be established

Proposed conservation/Special areas:



Approved grading:

Suggested grading: 3C

**References/Sources:**

**Site name:** Stanford House    Type of resource: Building  
Location: 3419 AD: S, E  
Erf/Farm : 184/  
Address: Longmarket Str Stanford

**Description:**

Ungraded  
Materials:  
Associated landscape features:

Original use:  
Current use:  
Landscape type:  
Design/Style:  
Construction date:  
Historical period in which constructed:  
Theme:

**Historical information:**

**Heritage Status:**

Previous status under National Monuments Act:

Current status under National Heritage Resources Act: Older than 60  
Responsible heritage authority: HWC

Approved grading:

Suggested grading:

Significance: Not conservation worthy

Constraints and Opportunities:

Heritage Management Recommendations:

Ungraded  
Formal protection in terms of zoning scheme regulations (Ungraded)

- Demolition could be considered
- HWC permit of approval required for demolitionUngraded

Formal protection in terms of zoning scheme regulations (Ungraded)

- Demolition could be considered
- HWC permit of approval required for demolition

Proposed conservation/Special areas:

**References/Sources:**

**Site name:** Stanford Milkwood forest    Type of resource: Natural resource  
Location: 3419 AD: 34 26' 12.58" S, 19 27' 8.29" E Google Earth  
Erf/Farm : /  
Address: Stanford

**Description:**

Materials:  
Associated landscape features:

Original use: Milkwood forest  
Current use: Recreational  
Landscape type: Natural  
Design/Style:  
Construction date:  
Historical period in which constructed:  
Theme: Biodiversity  
Natural amenity

**Historical information:**

**Heritage Status:**

Previous status under National Monuments Act:

Current status under National Heritage Resources Act:  
Responsible heritage authority: HWC

Approved grading:

Suggested grading:

Significance:

Constraints and Opportunities:

Heritage Management Recommendations:  
Ongoing repair and maintenance  
Formal protection in terms of zoning scheme regulations (Grade 3A)

- Conserve
- Remedial action to enhance significance
- Minimal intervention
- Interpretation
- HWC permit of approval required for any demolition, alteration or change in planning status

Proposed conservation/Special areas:

**References/Sources:**

**Site name:** Stanford House    Type of resource: Building  
Location: 3419 AD: S, E  
Erf/Farm : 219/  
Address: Longmarket Str Stanford

**Description:**

Ungraded  
Materials:  
Associated landscape features:

Original use:  
Current use:  
Landscape type:  
Design/Style:  
Construction date:  
Historical period in which constructed:  
Theme:

**Historical information:**

**Heritage Status:**

Previous status under National Monuments Act:

Current status under National Heritage Resources Act: Older than 60  
Responsible heritage authority: HWC

Approved grading:

Suggested grading:

Significance:

Constraints and Opportunities:

Heritage Management Recommendations:

Ungraded  
Formal protection in terms of zoning scheme regulations (Ungraded)

- Demolition could be considered
- HWC permit of approval required for

Proposed conservation/Special areas:

**References/Sources:**

**Site name:** Stanford House    Type of resource: Building  
Location: 3419 AD: S, E  
Erf/Farm : 218/  
Address: Longmarket Str Stanford

**Description:**

Ungraded  
Materials:  
Associated landscape features:

Original use:  
Current use:  
Landscape type:  
Design/Style:  
Construction date:  
Historical period in which constructed:  
Theme:

**Historical information:**

**Heritage Status:**

Previous status under National Monuments Act:

Current status under National Heritage Resources Act: Older than 60  
Responsible heritage authority:

Approved grading:

Suggested grading:

Significance:

Constraints and Opportunities:

Heritage Management Recommendations:

Ungraded  
Formal protection in terms of zoning scheme regulations (Ungraded)

- Demolition could be considered
- HWC permit of approval required for

Proposed conservation/Special areas:

**References/Sources:**

**Site name:** Stanford House    Type of resource: Building  
Location: 3419 AD: S, E  
Erf/Farm : 199/  
Address: Longmarket Str Stanford

**Description:**

Ungraded  
Materials:  
Associated landscape features:

Original use:  
Current use:  
Landscape type:  
Design/Style:  
Construction date:  
Historical period in which constructed:  
Theme:

**Historical information:**

**Heritage Status:**

Previous status under National Monuments Act:

Current status under National Heritage Resources Act: Older than 60  
Responsible heritage authority:

Approved grading:

Suggested grading:

Significance:

Constraints and Opportunities:

Heritage Management Recommendations:

Ungraded  
Formal protection in terms of zoning scheme regulations (Ungraded)

- Demolition could be considered
- HWC permit of approval required for

Proposed conservation/Special areas:

**References/Sources:**

**Site name:** Stanford House    Type of resource: Building  
Location: 3419 AD: S, E  
Erf/Farm : 202/  
Address: Longmarket Str Stanford

**Description:**

Ungraded  
Materials:  
Associated landscape features:

Original use:  
Current use:  
Landscape type:  
Design/Style:  
Construction date:  
Historical period in which constructed:  
Theme:

**Historical information:**

**Heritage Status:**

Previous status under National Monuments Act:

Current status under National Heritage Resources Act: Older than 60  
Responsible heritage authority:

Approved grading:

Suggested grading:

Significance:

Constraints and Opportunities:

Heritage Management Recommendations:

Ungraded  
Formal protection in terms of zoning scheme regulations (Ungraded)

- Demolition could be considered
- HWC permit of approval required for

Proposed conservation/Special areas:

**References/Sources:**

**Site name:** Stanford House    Type of resource: Building  
Location: 3419 AD: S, E  
Erf/Farm : 204/  
Address: Bezuidenhout Str Stanford

**Description:**

Ungraded  
Materials:  
Associated landscape features:

Original use:  
Current use:  
Landscape type:  
Design/Style:  
Construction date:  
Historical period in which constructed:  
Theme:

**Historical information:**

**Heritage Status:**

Previous status under National Monuments Act:

Current status under National Heritage Resources Act: Older than 60  
Responsible heritage authority: HWC

Approved grading:

Suggested grading:

Significance:

Constraints and Opportunities:

Heritage Management Recommendations:

Ungraded  
Formal protection in terms of zoning scheme regulations (Ungraded)

- Demolition could be considered
- HWC permit of approval required for

Proposed conservation/Special areas:

**References/Sources:**

**Site name:** Stanford House    Type of resource: Building  
Location: 3419 AD: S, E  
Erf/Farm : 201/  
Address: Bezuidenhout Str Stanford

**Description:**

Ungraded  
Materials:  
Associated landscape features:

Original use:  
Current use:  
Landscape type:  
Design/Style:  
Construction date:  
Historical period in which constructed:  
Theme:

**Historical information:**

**Heritage Status:**

Previous status under National Monuments Act:

Current status under National Heritage Resources Act: Older than 60  
Responsible heritage authority:

Approved grading:

Suggested grading:

Significance:

Constraints and Opportunities:

Heritage Management Recommendations:

Ungraded  
Formal protection in terms of zoning scheme regulations (Ungraded)

- Demolition could be considered  
- HWC permit of approval required for  
Proposed conservation/Special areas:

**References/Sources:**

**Site name:** Stanford House    Type of resource: Building  
Location: 3419 AD: S, E  
Erf/Farm : 192/  
Address: Bezuidenhout Str Stanford

**Description:**

Ungraded  
Materials:  
Associated landscape features:

Original use:  
Current use:  
Landscape type:  
Design/Style:  
Construction date:  
Historical period in which constructed:  
Theme:

**Historical information:**

**Heritage Status:**

Previous status under National Monuments Act:

Current status under National Heritage Resources Act: Older than 60  
Responsible heritage authority:

Approved grading:

Suggested grading:

Significance:

Constraints and Opportunities:

Heritage Management Recommendations:

Ungraded  
Formal protection in terms of zoning scheme regulations (Ungraded)

- Demolition could be considered
- HWC permit of approval required for

Proposed conservation/Special areas:

**References/Sources:**

**Site name:** Stanford House    Type of resource: Building  
Location: 3419 AD: S, E  
Erf/Farm : 189/  
Address: Bezuidenhout Str Stanford

**Description:**

Ungraded  
Materials:  
Associated landscape features:

Original use:  
Current use:  
Landscape type:  
Design/Style:  
Construction date:  
Historical period in which constructed:  
Theme:

**Historical information:**

**Heritage Status:**

Previous status under National Monuments Act:

Current status under National Heritage Resources Act: Older than 60  
Responsible heritage authority:

Approved grading:

Suggested grading:

Significance:

Constraints and Opportunities:

Heritage Management Recommendations:

Ungraded  
Formal protection in terms of zoning scheme regulations (Ungraded)

- Demolition could be considered
- HWC permit of approval required for

Proposed conservation/Special areas:

**References/Sources:**

**Site name:** Stanford House    Type of resource: Building  
Location: 3419 AD: S, E  
Erf/Farm : 185/  
Address: Bezuidenhout Str Stanford

**Description:**

Ungraded  
Materials:  
Associated landscape features:

Original use:  
Current use:  
Landscape type:  
Design/Style:  
Construction date:  
Historical period in which constructed:  
Theme:

**Historical information:**

**Heritage Status:**

Previous status under National Monuments Act:

Current status under National Heritage Resources Act: Older than 60  
Responsible heritage authority:

Approved grading:

Suggested grading:

Significance:

Constraints and Opportunities:

Heritage Management Recommendations:

Ungraded  
Formal protection in terms of zoning scheme regulations (Ungraded)

- Demolition could be considered
- HWC permit of approval required for

Proposed conservation/Special areas:

**References/Sources:**

**Site name:** Stanford House    Type of resource: Building  
Location: 3419 AD: S, E  
Erf/Farm : 316/  
Address: Bezuidenhout Str Stanford

**Description:**

Ungraded  
Materials:  
Associated landscape features:

Original use:  
Current use:  
Landscape type:  
Design/Style:  
Construction date:  
Historical period in which constructed:  
Theme:

**Historical information:**

**Heritage Status:**

Previous status under National Monuments Act:

Current status under National Heritage Resources Act: Older than 60  
Responsible heritage authority:

Approved grading:

Suggested grading:

Significance:

Constraints and Opportunities:

Heritage Management Recommendations:

Ungraded  
Formal protection in terms of zoning scheme regulations (Ungraded)

- Demolition could be considered
- HWC permit of approval required for

Proposed conservation/Special areas:

**References/Sources:**

**Site name:** Stanford House    Type of resource: Building  
Location: 3419 AD: S, E  
Erf/Farm : 322/  
Address: Bezuidenhout Str Stanford

**Description:**

Ungraded  
Materials:  
Associated landscape features:

Original use:  
Current use:  
Landscape type:  
Design/Style:  
Construction date:  
Historical period in which constructed:  
Theme:

**Historical information:**

**Heritage Status:**

Previous status under National Monuments Act:

Current status under National Heritage Resources Act: Older than 60  
Responsible heritage authority:

Approved grading:

Suggested grading:

Significance:

Constraints and Opportunities:

Heritage Management Recommendations:

Ungraded  
Formal protection in terms of zoning scheme regulations (Ungraded)

- Demolition could be considered
- HWC permit of approval required for

Proposed conservation/Special areas:

**References/Sources:**

**Site name:** Stanford House    Type of resource: Building  
Location: 3419 AD: S, E  
Erf/Farm : 273/  
Address: Bezuidenhout Str Stanford

**Description:**

Ungraded  
Materials:  
Associated landscape features:

Original use:  
Current use:  
Landscape type:  
Design/Style:  
Construction date:  
Historical period in which constructed:  
Theme:

**Historical information:**

**Heritage Status:**

Previous status under National Monuments Act:

Current status under National Heritage Resources Act: Older than 60  
Responsible heritage authority:

Approved grading:

Suggested grading:

Significance:

Constraints and Opportunities:

Heritage Management Recommendations:

Ungraded  
Formal protection in terms of zoning scheme regulations (Ungraded)

- Demolition could be considered
- HWC permit of approval required for

Proposed conservation/Special areas:

**References/Sources:**

**Site name:** Stanford House    Type of resource: Building  
Location: 3419 AD: S, E  
Erf/Farm : Re/230/  
Address: Bezuidenhout Str Stanford

**Description:**

Ungraded  
Materials:  
Associated landscape features:

Original use:  
Current use:  
Landscape type:  
Design/Style:  
Construction date:  
Historical period in which constructed:  
Theme:

**Historical information:**

**Heritage Status:**

Previous status under National Monuments Act:

Current status under National Heritage Resources Act: Older than 60  
Responsible heritage authority:

Approved grading:

Suggested grading:

Significance:

Constraints and Opportunities:

Heritage Management Recommendations:

Ungraded  
Formal protection in terms of zoning scheme regulations (Ungraded)

- Demolition could be considered
- HWC permit of approval required for

Proposed conservation/Special areas:

**References/Sources:**

**Site name:** Stanford House    Type of resource: Building  
Location: 3419 AD: S, E  
Erf/Farm : 233/  
Address: Bezuidenhout Str Stanford

**Description:**

Ungraded  
Materials:  
Associated landscape features:

Original use:  
Current use:  
Landscape type:  
Design/Style:  
Construction date:  
Historical period in which constructed:  
Theme:

**Historical information:**

**Heritage Status:**

Previous status under National Monuments Act:

Current status under National Heritage Resources Act: Older than 60  
Responsible heritage authority:

Approved grading:

Suggested grading:

Significance:

Constraints and Opportunities:

Heritage Management Recommendations:

Ungraded  
Formal protection in terms of zoning scheme regulations (Ungraded)

- Demolition could be considered
- HWC permit of approval required for

Proposed conservation/Special areas:

**References/Sources:**

**Site name:** Stanford House    Type of resource: Building  
Location: 3419 AD: S, E  
Erf/Farm : 672/  
Address: Bezuidenhout Str Stanford

**Description:**

Ungraded  
Materials:  
Associated landscape features:

Original use:  
Current use:  
Landscape type:  
Design/Style:  
Construction date:  
Historical period in which constructed:  
Theme:

**Historical information:**

**Heritage Status:**

Previous status under National Monuments Act:

Current status under National Heritage Resources Act: Older than 60  
Responsible heritage authority:

Approved grading:

Suggested grading:

Significance:

Constraints and Opportunities:

Heritage Management Recommendations:

Ungraded  
Formal protection in terms of zoning scheme regulations (Ungraded)

- Demolition could be considered
- HWC permit of approval required for

Proposed conservation/Special areas:

**References/Sources:**

**Site name:** Stanford House    Type of resource: Building  
Location: 3419 AD: S, E  
Erf/Farm : 245/  
Address: Bezuidenhout Str Stanford

**Description:**

Ungraded  
Materials:  
Associated landscape features:

Original use:  
Current use:  
Landscape type:  
Design/Style:  
Construction date:  
Historical period in which constructed:  
Theme:

**Historical information:**

**Heritage Status:**

Previous status under National Monuments Act:

Current status under National Heritage Resources Act: Older than 60  
Responsible heritage authority: HWC

Approved grading:

Suggested grading:

Significance:

Constraints and Opportunities:

Heritage Management Recommendations:

Ungraded  
Formal protection in terms of zoning scheme regulations (Ungraded)

- Demolition could be considered
- HWC permit of approval required for

Proposed conservation/Special areas:

**References/Sources:**

**Site name:** Stanford House    Type of resource: Building  
Location: 3419 AD: S, E  
Erf/Farm : 246/  
Address: Bezuidenhout Str Stanford

**Description:**

Ungraded  
Materials:  
Associated landscape features:

Original use:  
Current use:  
Landscape type:  
Design/Style:  
Construction date:  
Historical period in which constructed:  
Theme:

**Historical information:**

**Heritage Status:**

Previous status under National Monuments Act:

Current status under National Heritage Resources Act: Older than 60  
Responsible heritage authority: HWC

Approved grading:

Suggested grading:

Significance:

Constraints and Opportunities:

Heritage Management Recommendations:

Ungraded  
Formal protection in terms of zoning scheme regulations (Ungraded)

- Demolition could be considered
- HWC permit of approval required for

Proposed conservation/Special areas:

**References/Sources:**

**Site name:** Stanford House    Type of resource: Building  
Location: 3419 AD: S, E  
Erf/Farm : 249/  
Address: Bezuidenhout Str Stanford

**Description:**

Ungraded  
Materials:  
Associated landscape features:

Original use:  
Current use:  
Landscape type:  
Design/Style:  
Construction date:  
Historical period in which constructed:  
Theme:

**Historical information:**

**Heritage Status:**

Previous status under National Monuments Act:

Current status under National Heritage Resources Act: Older than 60  
Responsible heritage authority:

Approved grading:

Suggested grading:

Significance:

Constraints and Opportunities:

Heritage Management Recommendations:

Ungraded  
Formal protection in terms of zoning scheme regulations (Ungraded)

- Demolition could be considered
- HWC permit of approval required for

Proposed conservation/Special areas:

**References/Sources:**

**Site name:** Stanford House    Type of resource: Building  
Location: 3419 AD: S, E  
Erf/Farm : 254/  
Address: Bezuidenhout Str Stanford

**Description:**

Ungraded  
Materials:  
Associated landscape features:

Original use:  
Current use:  
Landscape type:  
Design/Style:  
Construction date:  
Historical period in which constructed:  
Theme:

**Historical information:**

**Heritage Status:**

Previous status under National Monuments Act:

Current status under National Heritage Resources Act: Older than 60  
Responsible heritage authority: HWC

Approved grading:

Suggested grading:

Significance:

Constraints and Opportunities:

Heritage Management Recommendations:

Ungraded  
Formal protection in terms of zoning scheme regulations (Ungraded)

- Demolition could be considered
- HWC permit of approval required for

Proposed conservation/Special areas:

**References/Sources:**

**Site name:** Stanford House    Type of resource: Building  
Location: 3419 AD: S, E  
Erf/Farm : 261/  
Address: Bezuidenhout Str Stanford

**Description:**

Ungraded  
Materials:  
Associated landscape features:

Original use:  
Current use:  
Landscape type:  
Design/Style:  
Construction date:  
Historical period in which constructed:  
Theme:

**Historical information:**

**Heritage Status:**

Previous status under National Monuments Act:

Current status under National Heritage Resources Act: Older than 60  
Responsible heritage authority: HWC

Approved grading:

Suggested grading:

Significance:

Constraints and Opportunities:

Heritage Management Recommendations:

Ungraded  
Formal protection in terms of zoning scheme regulations (Ungraded)

- Demolition could be considered
- HWC permit of approval required for

Proposed conservation/Special areas:

**References/Sources:**

**Site name:** Stanford House    Type of resource: Building  
Location: 3419 AD: S, E  
Erf/Farm : 269/  
Address: Bezuidenhout Str Stanford

**Description:**

Ungraded  
Materials:  
Associated landscape features:

Original use:  
Current use:  
Landscape type:  
Design/Style:  
Construction date:  
Historical period in which constructed:  
Theme:

**Historical information:**

**Heritage Status:**

Previous status under National Monuments Act:

Current status under National Heritage Resources Act: Older than 60  
Responsible heritage authority: HWC

Approved grading:

Suggested grading:

Significance:

Constraints and Opportunities:

Heritage Management Recommendations:

Ungraded  
Formal protection in terms of zoning scheme regulations (Ungraded)

- Demolition could be considered
- HWC permit of approval required for

Proposed conservation/Special areas:

**References/Sources:**

**Site name:** Stanford House    Type of resource: Building  
Location: 3419 AD: S, E  
Erf/Farm : 270/  
Address: Bezuidenhout Str Stanford

**Description:**

Ungraded  
Materials:  
Associated landscape features:

Original use:  
Current use:  
Landscape type:  
Design/Style:  
Construction date:  
Historical period in which constructed:  
Theme:

**Historical information:**

**Heritage Status:**

Previous status under National Monuments Act:

Current status under National Heritage Resources Act: Older than 60  
Responsible heritage authority: HWC

Approved grading:

Suggested grading:

Significance:

Constraints and Opportunities:

Heritage Management Recommendations:

Ungraded  
Formal protection in terms of zoning scheme regulations (Ungraded)

- Demolition could be considered
- HWC permit of approval required for

Proposed conservation/Special areas:

**References/Sources:**

**Site name:** Stanford House    Type of resource: Building  
Location: 3419 AD: S, E  
Erf/Farm : 585/  
Address: Daneel Str Stanford

**Description:**

Ungraded  
Materials:  
Associated landscape features:

Original use:  
Current use:  
Landscape type:  
Design/Style:  
Construction date:  
Historical period in which constructed:  
Theme:

**Historical information:**

**Heritage Status:**

Previous status under National Monuments Act:

Current status under National Heritage Resources Act: Older than 60  
Responsible heritage authority: HWC

Approved grading:

Suggested grading:

Significance:

Constraints and Opportunities:

Heritage Management Recommendations:

Ungraded  
Formal protection in terms of zoning scheme regulations (Ungraded)

- Demolition could be considered
- HWC permit of approval required for

Proposed conservation/Special areas:

**References/Sources:**

**Site name:** Stanford House    Type of resource: Building  
Location: 3419 AD: S, E  
Erf/Farm : 243/  
Address: Daneel Str Stanford

**Description:**

Ungraded  
Materials:  
Associated landscape features:

Original use:  
Current use:  
Landscape type:  
Design/Style:  
Construction date:  
Historical period in which constructed:  
Theme:

**Historical information:**

**Heritage Status:**

Previous status under National Monuments Act:

Current status under National Heritage Resources Act: Older than 60  
Responsible heritage authority: HWC

Approved grading:

Suggested grading:

Significance:

Constraints and Opportunities:

Heritage Management Recommendations:

Ungraded  
Formal protection in terms of zoning scheme regulations (Ungraded)

- Demolition could be considered
- HWC permit of approval required for

Proposed conservation/Special areas:

**References/Sources:**

**Site name:** Stanford House    Type of resource: Building  
Location: 3419 AD: S, E  
Erf/Farm : 244/  
Address: Daneel Str Stanford

**Description:**

Ungraded  
Materials:  
Associated landscape features:

Original use:  
Current use:  
Landscape type:  
Design/Style:  
Construction date:  
Historical period in which constructed:  
Theme:

**Historical information:**

**Heritage Status:**

Previous status under National Monuments Act:

Current status under National Heritage Resources Act: Older than 60  
Responsible heritage authority: HWC

Approved grading:

Suggested grading:

Significance:

Constraints and Opportunities:

Heritage Management Recommendations:

Ungraded  
Formal protection in terms of zoning scheme regulations (Ungraded)

- Demolition could be considered
- HWC permit of approval required for

Proposed conservation/Special areas:

**References/Sources:**

**Site name:** Stanford House    Type of resource: Building  
Location: 3419 AD: S, E  
Erf/Farm : 248/  
Address: Daneel Str Stanford

**Description:**

Ungraded  
Materials:  
Associated landscape features:

Original use:  
Current use:  
Landscape type:  
Design/Style:  
Construction date:  
Historical period in which constructed:  
Theme:

**Historical information:**

**Heritage Status:**

Previous status under National Monuments Act:

Current status under National Heritage Resources Act: Older than 60  
Responsible heritage authority: HWC

Approved grading:

Suggested grading:

Significance:

Constraints and Opportunities:

Heritage Management Recommendations:

Ungraded  
Formal protection in terms of zoning scheme regulations (Ungraded)

- Demolition could be considered
- HWC permit of approval required for

Proposed conservation/Special areas:

**References/Sources:**

**Site name:** Stanford House    Type of resource: Building  
Location: 3419 AD: S, E  
Erf/Farm : 252/  
Address: Daneel Str Stanford

**Description:**

Ungraded  
Materials:  
Associated landscape features:

Original use:  
Current use:  
Landscape type:  
Design/Style:  
Construction date:  
Historical period in which constructed:  
Theme:

**Historical information:**

**Heritage Status:**

Previous status under National Monuments Act:

Current status under National Heritage Resources Act: Older than 60  
Responsible heritage authority: HWC

Approved grading:

Suggested grading:

Significance:

Constraints and Opportunities:

Heritage Management Recommendations:

Ungraded  
Formal protection in terms of zoning scheme regulations (Ungraded)

- Demolition could be considered
- HWC permit of approval required for

Proposed conservation/Special areas:

**References/Sources:**

**Site name:** Stanford House    Type of resource: Building  
Location: 3419 AD: S, E  
Erf/Farm : 263/  
Address: Daneel Str Stanford

**Description:**

Ungraded  
Materials:  
Associated landscape features:

Original use:  
Current use:  
Landscape type:  
Design/Style:  
Construction date:  
Historical period in which constructed:  
Theme:

**Historical information:**

**Heritage Status:**

Previous status under National Monuments Act:

Current status under National Heritage Resources Act: Older than 60  
Responsible heritage authority: HWC

Approved grading:

Suggested grading:

Significance:

Constraints and Opportunities:

Heritage Management Recommendations:

Ungraded  
Formal protection in terms of zoning scheme regulations (Ungraded)

- Demolition could be considered
- HWC permit of approval required for

Proposed conservation/Special areas:

**References/Sources:**

**Site name:** Stanford House    Type of resource: Building  
Location: 3419 AD: S, E  
Erf/Farm : 1771/  
Address: Daneel Str Stanford

**Description:**

Ungraded  
Materials:  
Associated landscape features:

Original use:  
Current use:  
Landscape type:  
Design/Style:  
Construction date:  
Historical period in which constructed:  
Theme:

**Historical information:**

**Heritage Status:**

Previous status under National Monuments Act:

Current status under National Heritage Resources Act: Older than 60  
Responsible heritage authority: HWC

Approved grading:

Suggested grading:

Significance:

Constraints and Opportunities:

Heritage Management Recommendations:

Ungraded  
Formal protection in terms of zoning scheme regulations (Ungraded)

- Demolition could be considered
- HWC permit of approval required for

Proposed conservation/Special areas:

**References/Sources:**

**Site name:** Stanford House    Type of resource: Building  
Location: 3419 AD: S, E  
Erf/Farm : 271/  
Address: Daneel Str Stanford

**Description:**

Ungraded  
Materials:  
Associated landscape features:

Original use:  
Current use:  
Landscape type:  
Design/Style:  
Construction date:  
Historical period in which constructed:  
Theme:

**Historical information:**

**Heritage Status:**

Previous status under National Monuments Act:

Current status under National Heritage Resources Act: Older than 60  
Responsible heritage authority: HWC

Approved grading:

Suggested grading:

Significance:

Constraints and Opportunities:

Heritage Management Recommendations:

Ungraded  
Formal protection in terms of zoning scheme regulations (Ungraded)

- Demolition could be considered
- HWC permit of approval required for

Proposed conservation/Special areas:

**References/Sources:**

**Site name:** Stanford House    Type of resource: Building  
Location: 3419 AD: S, E  
Erf/Farm : 275/  
Address: Daneel Str Stanford

**Description:**

Ungraded  
Materials:  
Associated landscape features:

Original use:  
Current use:  
Landscape type:  
Design/Style:  
Construction date:  
Historical period in which constructed:  
Theme:

**Historical information:**

**Heritage Status:**

Previous status under National Monuments Act:

Current status under National Heritage Resources Act: Older than 60  
Responsible heritage authority: HWC

Approved grading:

Suggested grading:

Significance:

Constraints and Opportunities:

Heritage Management Recommendations:

Ungraded  
Formal protection in terms of zoning scheme regulations (Ungraded)

- Demolition could be considered
- HWC permit of approval required for

Proposed conservation/Special areas:

**References/Sources:**

**Site name:** Stanford House    Type of resource: Building  
Location: 3419 AD: S, E  
Erf/Farm : 276/  
Address: Daneel Str Stanford

**Description:**

Ungraded  
Materials:  
Associated landscape features:

Original use:  
Current use:  
Landscape type:  
Design/Style:  
Construction date:  
Historical period in which constructed:  
Theme:

**Historical information:**

**Heritage Status:**

Previous status under National Monuments Act:

Current status under National Heritage Resources Act: Older than 60  
Responsible heritage authority: HWC

Approved grading:

Suggested grading:

Significance:

Constraints and Opportunities:

Heritage Management Recommendations:

Ungraded  
Formal protection in terms of zoning scheme regulations (Ungraded)

- Demolition could be considered
- HWC permit of approval required for

Proposed conservation/Special areas:

**References/Sources:**

**Site name:** Stanford House    Type of resource: Building  
Location: 3419 AD: S, E  
Erf/Farm : 279/  
Address: Daneel Str Stanford

**Description:**

Ungraded  
Materials:  
Associated landscape features:

Original use:  
Current use:  
Landscape type:  
Design/Style:  
Construction date:  
Historical period in which constructed:  
Theme:

**Historical information:**

**Heritage Status:**

Previous status under National Monuments Act:

Current status under National Heritage Resources Act: Older than 60  
Responsible heritage authority: HWC

Approved grading:

Suggested grading:

Significance:

Constraints and Opportunities:

Heritage Management Recommendations:

Ungraded  
Formal protection in terms of zoning scheme regulations (Ungraded)

- Demolition could be considered
- HWC permit of approval required for

Proposed conservation/Special areas:

**References/Sources:**

**Site name:** Stanford House    Type of resource: Building  
Location: 3419 AD: S, E  
Erf/Farm : 280/  
Address: Daneel Str Stanford

**Description:**

Ungraded  
Materials:  
Associated landscape features:

Original use:  
Current use:  
Landscape type:  
Design/Style:  
Construction date:  
Historical period in which constructed:  
Theme:

**Historical information:**

**Heritage Status:**

Previous status under National Monuments Act:

Current status under National Heritage Resources Act: Older than 60  
Responsible heritage authority: HWC

Approved grading:

Suggested grading:

Significance:

Constraints and Opportunities:

Heritage Management Recommendations:

Ungraded  
Formal protection in terms of zoning scheme regulations (Ungraded)

- Demolition could be considered
- HWC permit of approval required for

Proposed conservation/Special areas:

**References/Sources:**

**Site name:** Stanford House    Type of resource: Building  
Location: 3419 AD: S, E  
Erf/Farm : 272/  
Address: Daneel Str Stanford

**Description:**

Ungraded  
Materials:  
Associated landscape features:

Original use:  
Current use:  
Landscape type:  
Design/Style:  
Construction date:  
Historical period in which constructed:  
Theme:

**Historical information:**

**Heritage Status:**

Previous status under National Monuments Act:

Current status under National Heritage Resources Act: Older than 60  
Responsible heritage authority: HWC

Approved grading:

Suggested grading:

Significance:

Constraints and Opportunities:

Heritage Management Recommendations:

Ungraded  
Formal protection in terms of zoning scheme regulations (Ungraded)

- Demolition could be considered
- HWC permit of approval required for

Proposed conservation/Special areas:

**References/Sources:**

**Site name:** Stanford House    Type of resource: Building  
Location: 3419 AD: S, E  
Erf/Farm : 736/  
Address: Shortmarket Str Stanford

**Description:**

Ungraded  
Materials:  
Associated landscape features:

Original use:  
Current use:  
Landscape type:  
Design/Style:  
Construction date:  
Historical period in which constructed:  
Theme:

**Historical information:**

**Heritage Status:**

Previous status under National Monuments Act:

Current status under National Heritage Resources Act: Older than 60  
Responsible heritage authority: HWC

Approved grading:

Suggested grading:

Significance:

Constraints and Opportunities:

Heritage Management Recommendations:

Ungraded  
Formal protection in terms of zoning scheme regulations (Ungraded)

- Demolition could be considered
- HWC permit of approval required for

Proposed conservation/Special areas:

**References/Sources:**

**Site name:** Stanford House    Type of resource: Building  
Location: 3419 AD: S, E  
Erf/Farm : 127/  
Address: Shortmarket Str Stanford

**Description:**

Ungraded  
Materials:  
Associated landscape features:

Original use:  
Current use:  
Landscape type:  
Design/Style:  
Construction date:  
Historical period in which constructed:  
Theme:

**Historical information:**

**Heritage Status:**

Previous status under National Monuments Act:

Current status under National Heritage Resources Act: Older than 60  
Responsible heritage authority: HWC

Approved grading:

Suggested grading:

Significance:

Constraints and Opportunities:

Heritage Management Recommendations:

Ungraded  
Formal protection in terms of zoning scheme regulations (Ungraded)

- Demolition could be considered
- HWC permit of approval required for

Proposed conservation/Special areas:

**References/Sources:**

**Site name:** Stanford House    Type of resource: Building  
Location: 3419 AD: S, E  
Erf/Farm : 562/  
Address: Shortmarket Str Stanford

**Description:**

Ungraded  
Materials:  
Associated landscape features:

Original use:  
Current use:  
Landscape type:  
Design/Style:  
Construction date:  
Historical period in which constructed:  
Theme:

**Historical information:**

**Heritage Status:**

Previous status under National Monuments Act:

Current status under National Heritage Resources Act: Older than 60  
Responsible heritage authority: HWC

Approved grading:

Suggested grading:

Significance:

Constraints and Opportunities:

Heritage Management Recommendations:

Ungraded  
Formal protection in terms of zoning scheme regulations (Ungraded)

- Demolition could be considered
- HWC permit of approval required for

Proposed conservation/Special areas:

**References/Sources:**

**Site name:** Stanford House    Type of resource: Building  
Location: 3419 AD: S, E  
Erf/Farm : 582/  
Address: Shortmarket Str Stanford

**Description:**

Ungraded  
Materials:  
Associated landscape features:

Original use:  
Current use:  
Landscape type:  
Design/Style:  
Construction date:  
Historical period in which constructed:  
Theme:

**Historical information:**

**Heritage Status:**

Previous status under National Monuments Act:

Current status under National Heritage Resources Act: Older than 60  
Responsible heritage authority: HWC

Approved grading:

Suggested grading:

Significance:

Constraints and Opportunities:

Heritage Management Recommendations:

Ungraded  
Formal protection in terms of zoning scheme regulations (Ungraded)

- Demolition could be considered
- HWC permit of approval required for

Proposed conservation/Special areas:

**References/Sources:**

**Site name:** Stanford House    Type of resource: Building  
Location: 3419 AD: S, E  
Erf/Farm : 581/  
Address: Shortmarket Str Stanford

**Description:**

Ungraded  
Materials:  
Associated landscape features:

Original use:  
Current use:  
Landscape type:  
Design/Style:  
Construction date:  
Historical period in which constructed:  
Theme:

**Historical information:**

**Heritage Status:**

Previous status under National Monuments Act:

Current status under National Heritage Resources Act: Older than 60  
Responsible heritage authority: HWC

Approved grading:

Suggested grading:

Significance:

Constraints and Opportunities:

Heritage Management Recommendations:

Ungraded  
Formal protection in terms of zoning scheme regulations (Ungraded)

- Demolition could be considered
- HWC permit of approval required for

Proposed conservation/Special areas:

**References/Sources:**

**Site name:** Stanford House    Type of resource: Building  
Location: 3419 AD: S, E  
Erf/Farm : 552/  
Address: Shortmarket Str Stanford

**Description:**

Ungraded  
Materials:  
Associated landscape features:

Original use:  
Current use:  
Landscape type:  
Design/Style:  
Construction date:  
Historical period in which constructed:  
Theme:

**Historical information:**

**Heritage Status:**

Previous status under National Monuments Act:

Current status under National Heritage Resources Act: Older than 60  
Responsible heritage authority: HWC

Approved grading:

Suggested grading:

Significance:

Constraints and Opportunities:

Heritage Management Recommendations:

Ungraded  
Formal protection in terms of zoning scheme regulations (Ungraded)

- Demolition could be considered
- HWC permit of approval required for

Proposed conservation/Special areas:

**References/Sources:**

**Site name:** Stanford House    Type of resource: Building  
Location: 3419 AD: S, E  
Erf/Farm : 79/  
Address: Church Str Stanford

**Description:**

Ungraded  
Materials:  
Associated landscape features:

Original use:  
Current use:  
Landscape type:  
Design/Style:  
Construction date:  
Historical period in which constructed:  
Theme:

**Historical information:**

**Heritage Status:**

Previous status under National Monuments Act:

Current status under National Heritage Resources Act: Older than 60  
Responsible heritage authority: HWC

Approved grading:

Suggested grading:

Significance:

Constraints and Opportunities:

Heritage Management Recommendations:

Ungraded  
Formal protection in terms of zoning scheme regulations (Ungraded)

- Demolition could be considered
- HWC permit of approval required for

Proposed conservation/Special areas:

**References/Sources:**

**Site name:** Stanford House    Type of resource: Building  
Location: 3419 AD: S, E  
Erf/Farm : 81/  
Address: Church Str Stanford

**Description:**

Ungraded  
Materials:  
Associated landscape features:

Original use:  
Current use:  
Landscape type:  
Design/Style:  
Construction date:  
Historical period in which constructed:  
Theme:

**Historical information:**

**Heritage Status:**

Previous status under National Monuments Act:

Current status under National Heritage Resources Act: Older than 60  
Responsible heritage authority: HWC

Approved grading:

Suggested grading:

Significance:

Constraints and Opportunities:

Heritage Management Recommendations:

Ungraded  
Formal protection in terms of zoning scheme regulations (Ungraded)

- Demolition could be considered
- HWC permit of approval required for

Proposed conservation/Special areas:

**References/Sources:**

**Site name:** Stanford House    Type of resource: Building  
Location: 3419 AD: S, E  
Erf/Farm : 91/  
Address: Church Str Stanford

**Description:**

Ungraded  
Materials:  
Associated landscape features:

Original use:  
Current use:  
Landscape type:  
Design/Style:  
Construction date:  
Historical period in which constructed:  
Theme:

**Historical information:**

**Heritage Status:**

Previous status under National Monuments Act:

Current status under National Heritage Resources Act: Older than 60  
Responsible heritage authority: HWC

Approved grading:

Suggested grading:

Significance:

Constraints and Opportunities:

Heritage Management Recommendations:

Ungraded  
Formal protection in terms of zoning scheme regulations (Ungraded)

- Demolition could be considered
- HWC permit of approval required for

Proposed conservation/Special areas:

**References/Sources:**

**Site name:** Stanford House    Type of resource: Building  
Location: 3419 AD: S, E  
Erf/Farm : 2172/  
Address: Church Str Stanford

**Description:**

Ungraded  
Materials:  
Associated landscape features:

Original use:  
Current use:  
Landscape type:  
Design/Style:  
Construction date:  
Historical period in which constructed:  
Theme:

**Historical information:**

**Heritage Status:**

Previous status under National Monuments Act:

Current status under National Heritage Resources Act: Older than 60  
Responsible heritage authority: HWC

Approved grading:

Suggested grading:

Significance:

Constraints and Opportunities:

Heritage Management Recommendations:

Ungraded  
Formal protection in terms of zoning scheme regulations (Ungraded)

- Demolition could be considered
- HWC permit of approval required for

Proposed conservation/Special areas:

**References/Sources:**

**Site name:** Stanford House    Type of resource: Building  
Location: 3419 AD: S, E  
Erf/Farm : 55/  
Address: Caledon Str Stanford

**Description:**

Ungraded  
Materials:  
Associated landscape features:

Original use:  
Current use:  
Landscape type:  
Design/Style:  
Construction date:  
Historical period in which constructed:  
Theme:

**Historical information:**

**Heritage Status:**

Previous status under National Monuments Act:

Current status under National Heritage Resources Act: Older than 60  
Responsible heritage authority: HWC

Approved grading:

Suggested grading:

Significance:

Constraints and Opportunities:

Heritage Management Recommendations:

Ungraded  
Formal protection in terms of zoning scheme regulations (Ungraded)

- Demolition could be considered
- HWC permit of approval required for

Proposed conservation/Special areas:

**References/Sources:**

**Site name:** Stanford House    Type of resource: Building  
Location: 3419 AD: S, E  
Erf/Farm : 583/  
Address: Caledon Str Stanford

**Description:**

Ungraded  
Materials:  
Associated landscape features:

Original use:  
Current use:  
Landscape type:  
Design/Style:  
Construction date:  
Historical period in which constructed:  
Theme:

**Historical information:**

**Heritage Status:**

Previous status under National Monuments Act:

Current status under National Heritage Resources Act: Older than 60  
Responsible heritage authority: HWC

Approved grading:

Suggested grading:

Significance:

Constraints and Opportunities:

Heritage Management Recommendations:

Ungraded  
Formal protection in terms of zoning scheme regulations (Ungraded)

- Demolition could be considered
- HWC permit of approval required for

Proposed conservation/Special areas:

**References/Sources:**

**Site name:** Stanford House    Type of resource: Building  
Location: 3419 AD: S, E  
Erf/Farm : 303/  
Address: Du Toit Str Stanford

**Description:**

Ungraded  
Materials:  
Associated landscape features:

Original use:  
Current use:  
Landscape type:  
Design/Style:  
Construction date:  
Historical period in which constructed:  
Theme:

**Historical information:**

**Heritage Status:**

Previous status under National Monuments Act:

Current status under National Heritage Resources Act: Older than 60  
Responsible heritage authority: HWC

Approved grading:

Suggested grading:

Significance:

Constraints and Opportunities:

Heritage Management Recommendations:

Ungraded  
Formal protection in terms of zoning scheme regulations (Ungraded)

- Demolition could be considered
- HWC permit of approval required for

Proposed conservation/Special areas:

**References/Sources:**

**Site name:** Stanford House    Type of resource: Building  
Location: 3419 AD: S, E  
Erf/Farm : 408/  
Address: Queen Victoria Str Stanford

**Description:**

Ungraded  
Materials:  
Associated landscape features:

Original use:  
Current use:  
Landscape type:  
Design/Style:  
Construction date:  
Historical period in which constructed:  
Theme:

**Historical information:**

**Heritage Status:**

Previous status under National Monuments Act:

Current status under National Heritage Resources Act: Older than 60  
Responsible heritage authority: HWC

Approved grading:

Suggested grading:

Significance:

Constraints and Opportunities:

Heritage Management Recommendations:

Ungraded  
Formal protection in terms of zoning scheme regulations (Ungraded)

- Demolition could be considered
- HWC permit of approval required for

Proposed conservation/Special areas:

**References/Sources:**

**Site name:** Stanford House    Type of resource: Building  
Location: 3419 AD: S, E  
Erf/Farm : 193/  
Address: Queen Victoria Str Stanford

**Description:**

Ungraded  
Materials:  
Associated landscape features:

Original use:  
Current use:  
Landscape type:  
Design/Style:  
Construction date:  
Historical period in which constructed:  
Theme:

**Historical information:**

**Heritage Status:**

Previous status under National Monuments Act:

Current status under National Heritage Resources Act: Older than 60  
Responsible heritage authority: HWC

Approved grading:

Suggested grading:

Significance:

Constraints and Opportunities:

Heritage Management Recommendations:

Ungraded  
Formal protection in terms of zoning scheme regulations (Ungraded)

- Demolition could be considered
- HWC permit of approval required for

Proposed conservation/Special areas:

**References/Sources:**

**Site name:** Stanford House    Type of resource: Building  
Location: 3419 AD: S, E  
Erf/Farm : 111/  
Address: Queen Victoria Str Stanford

**Description:**

Ungraded  
Materials:  
Associated landscape features:

Original use:  
Current use:  
Landscape type:  
Design/Style:  
Construction date:  
Historical period in which constructed:  
Theme:

**Historical information:**

**Heritage Status:**

Previous status under National Monuments Act:

Current status under National Heritage Resources Act: Older than 60  
Responsible heritage authority: HWC

Approved grading:

Suggested grading:

Significance:

Constraints and Opportunities:

Heritage Management Recommendations:

Ungraded  
Formal protection in terms of zoning scheme regulations (Ungraded)

- Demolition could be considered
- HWC permit of approval required for

Proposed conservation/Special areas:

**References/Sources:**

**Site name:** Stanford House    Type of resource: Building  
Location: 3419 AD: S, E  
Erf/Farm : 308/  
Address: Queen Victoria Str Stanford

**Description:**

Ungraded  
Materials:  
Associated landscape features:

Original use:  
Current use:  
Landscape type:  
Design/Style:  
Construction date:  
Historical period in which constructed:  
Theme:

**Historical information:**

**Heritage Status:**

Previous status under National Monuments Act:

Current status under National Heritage Resources Act: Older than 60  
Responsible heritage authority: HWC

Approved grading:

Suggested grading:

Significance:

Constraints and Opportunities:

Heritage Management Recommendations:

Ungraded  
Formal protection in terms of zoning scheme regulations (Ungraded)

- Demolition could be considered
- HWC permit of approval required for

Proposed conservation/Special areas:

**References/Sources:**

**Site name:** Stanford House    Type of resource: Building  
Location: 3419 AD: S, E  
Erf/Farm : 152/  
Address: Queen Victoria Str Stanford

**Description:**

Ungraded  
Materials:  
Associated landscape features:

Original use:  
Current use:  
Landscape type:  
Design/Style:  
Construction date:  
Historical period in which constructed:  
Theme:

**Historical information:**

**Heritage Status:**

Previous status under National Monuments Act:

Current status under National Heritage Resources Act: Older than 60  
Responsible heritage authority: HWC

Approved grading:

Suggested grading:

Significance:

Constraints and Opportunities:

Heritage Management Recommendations:

Ungraded  
Formal protection in terms of zoning scheme regulations (Ungraded)

- Demolition could be considered
- HWC permit of approval required for

Proposed conservation/Special areas:

**References/Sources:**

**Site name:** Stanford House    Type of resource: Building  
Location: 3419 AD: S, E  
Erf/Farm : 1657/  
Address: Morton Str Stanford

**Description:**

Ungraded  
Materials:  
Associated landscape features:

Original use:  
Current use:  
Landscape type:  
Design/Style:  
Construction date:  
Historical period in which constructed:  
Theme:

**Historical information:**

**Heritage Status:**

Previous status under National Monuments Act:

Current status under National Heritage Resources Act: Older than 60  
Responsible heritage authority: HWC

Approved grading:

Suggested grading:

Significance:

Constraints and Opportunities:

Heritage Management Recommendations:

Ungraded  
Formal protection in terms of zoning scheme regulations (Ungraded)

- Demolition could be considered
- HWC permit of approval required for

Proposed conservation/Special areas:

**References/Sources:**

**Site name:** Stanford House    Type of resource: Building  
Location: 3419 AD: S, E  
Erf/Farm : 315/  
Address: Morton Str Stanford

**Description:**

Ungraded  
Materials:  
Associated landscape features:

Original use:  
Current use:  
Landscape type:  
Design/Style:  
Construction date:  
Historical period in which constructed:  
Theme:

**Historical information:**

**Heritage Status:**

Previous status under National Monuments Act:

Current status under National Heritage Resources Act: Older than 60  
Responsible heritage authority: HWC

Approved grading:

Suggested grading:

Significance:

Constraints and Opportunities:

Heritage Management Recommendations:

Ungraded  
Formal protection in terms of zoning scheme regulations (Ungraded)

- Demolition could be considered
- HWC permit of approval required for

Proposed conservation/Special areas:

**References/Sources:**

**Site name:** Stanford House    Type of resource: Building  
Location: 3419 AD: S, E  
Erf/Farm : 393/  
Address: Morton Str Stanford

**Description:**

Ungraded  
Materials:  
Associated landscape features:

Original use:  
Current use:  
Landscape type:  
Design/Style:  
Construction date:  
Historical period in which constructed:  
Theme:

**Historical information:**

**Heritage Status:**

Previous status under National Monuments Act:

Current status under National Heritage Resources Act: Older than 60  
Responsible heritage authority: HWC

Approved grading:

Suggested grading:

Significance:

Constraints and Opportunities:

Heritage Management Recommendations:

Ungraded  
Formal protection in terms of zoning scheme regulations (Ungraded)

- Demolition could be considered
- HWC permit of approval required for

Proposed conservation/Special areas:

**References/Sources:**

**Site name:** Stanford House    Type of resource: Building  
Location: 3419 AD: S, E  
Erf/Farm : 396/  
Address: Buiten Str Stanford

**Description:**

Ungraded  
Materials:  
Associated landscape features:

Original use:  
Current use:  
Landscape type:  
Design/Style:  
Construction date:  
Historical period in which constructed:  
Theme:

**Historical information:**

**Heritage Status:**

Previous status under National Monuments Act:

Current status under National Heritage Resources Act: Older than 60  
Responsible heritage authority: HWC

Approved grading:

Suggested grading:

Significance:

Constraints and Opportunities:

Heritage Management Recommendations:

Ungraded  
Formal protection in terms of zoning scheme regulations (Ungraded)

- Demolition could be considered
- HWC permit of approval required for

Proposed conservation/Special areas:

**References/Sources:**

**Site name:** Stanford House    Type of resource: Building  
Location: 3419 AD: S, E  
Erf/Farm : 408/  
Address: Buiten Str Stanford

**Description:**

Ungraded  
Materials:  
Associated landscape features:

Original use:  
Current use:  
Landscape type:  
Design/Style:  
Construction date:  
Historical period in which constructed:  
Theme:

**Historical information:**

**Heritage Status:**

Previous status under National Monuments Act:

Current status under National Heritage Resources Act: Older than 60  
Responsible heritage authority: HWC

Approved grading:

Suggested grading:

Significance:

Constraints and Opportunities:

Heritage Management Recommendations:

Ungraded  
Formal protection in terms of zoning scheme regulations (Ungraded)

- Demolition could be considered
- HWC permit of approval required for

Proposed conservation/Special areas:

**References/Sources:**

**Site name:** Stanford House    Type of resource: Building  
Location: 3419 AD: S, E  
Erf/Farm : 407/  
Address: Buiten Str Stanford

**Description:**

Ungraded  
Materials:  
Associated landscape features:

Original use:  
Current use:  
Landscape type:  
Design/Style:  
Construction date:  
Historical period in which constructed:  
Theme:

**Historical information:**

**Heritage Status:**

Previous status under National Monuments Act:

Current status under National Heritage Resources Act: Older than 60  
Responsible heritage authority: HWC

Approved grading:

Suggested grading:

Significance:

Constraints and Opportunities:

Heritage Management Recommendations:

Ungraded  
Formal protection in terms of zoning scheme regulations (Ungraded)

- Demolition could be considered
- HWC permit of approval required for

Proposed conservation/Special areas:

**References/Sources:**

**Site name:** Stanford House    Type of resource: Building  
Location: 3419 AD: S, E  
Erf/Farm : 11/  
Address: Buiten Str Stanford

**Description:**

Ungraded  
Materials:  
Associated landscape features:

Original use:  
Current use:  
Landscape type:  
Design/Style:  
Construction date:  
Historical period in which constructed:  
Theme:

**Historical information:**

**Heritage Status:**

Previous status under National Monuments Act:

Current status under National Heritage Resources Act: Older than 60  
Responsible heritage authority: HWC

Approved grading:

Suggested grading:

Significance:

Constraints and Opportunities:

Heritage Management Recommendations:

Ungraded  
Formal protection in terms of zoning scheme regulations (Ungraded)

- Demolition could be considered
- HWC permit of approval required for

Proposed conservation/Special areas:

**References/Sources:**

**Site name:** Stanford House    Type of resource: Building  
Location: 3419 AD: S, E  
Erf/Farm : 1/  
Address: Buiten Str Stanford

**Description:**

Ungraded  
Materials:  
Associated landscape features:

Original use:  
Current use:  
Landscape type:  
Design/Style:  
Construction date:  
Historical period in which constructed:  
Theme:

**Historical information:**

**Heritage Status:**

Previous status under National Monuments Act:

Current status under National Heritage Resources Act: Older than 60  
Responsible heritage authority: HWC

Approved grading:

Suggested grading:

Significance:

Constraints and Opportunities:

Heritage Management Recommendations:

Ungraded  
Formal protection in terms of zoning scheme regulations (Ungraded)

- Demolition could be considered
- HWC permit of approval required for

Proposed conservation/Special areas:

**References/Sources:**

**Site name:** Stanford House    Type of resource: Building  
Location: 3419 AD: S, E  
Erf/Farm : 400/  
Address: JJ Swart Close Stanford

**Description:**

Ungraded  
Materials:  
Associated landscape features:

Original use:  
Current use:  
Landscape type:  
Design/Style:  
Construction date:  
Historical period in which constructed:  
Theme:

**Historical information:**

**Heritage Status:**

Previous status under National Monuments Act:

Current status under National Heritage Resources Act: Older than 60  
Responsible heritage authority: HWC

Approved grading:

Suggested grading:

Significance:

Constraints and Opportunities:

Heritage Management Recommendations:

Ungraded  
Formal protection in terms of zoning scheme regulations (Ungraded)

- Demolition could be considered
- HWC permit of approval required for

Proposed conservation/Special areas:

**References/Sources:**

**Site name:** Stanford House    Type of resource: Building  
Location: 3419 AD: S, E  
Erf/Farm : 401/  
Address: JJ Swart Close Stanford

**Description:**

Ungraded  
Materials:  
Associated landscape features:

Original use:  
Current use:  
Landscape type:  
Design/Style:  
Construction date:  
Historical period in which constructed:  
Theme:

**Historical information:**

**Heritage Status:**

Previous status under National Monuments Act:

Current status under National Heritage Resources Act: Older than 60  
Responsible heritage authority: HWC

Approved grading:

Suggested grading:

Significance:

Constraints and Opportunities:

Heritage Management Recommendations:

Ungraded  
Formal protection in terms of zoning scheme regulations (Ungraded)

- Demolition could be considered
- HWC permit of approval required for

Proposed conservation/Special areas:

**References/Sources:**

**Site name:** Stanford House    Type of resource: Building  
Location: 3419 AD: S, E  
Erf/Farm : 403/  
Address: JJ Swart Close Stanford

**Description:**

Ungraded  
Materials:  
Associated landscape features:

Original use:  
Current use:  
Landscape type:  
Design/Style:  
Construction date:  
Historical period in which constructed:  
Theme:

**Historical information:**

**Heritage Status:**

Previous status under National Monuments Act:

Current status under National Heritage Resources Act: Older than 60  
Responsible heritage authority: HWC

Approved grading:

Suggested grading:

Significance:

Constraints and Opportunities:

Heritage Management Recommendations:

Ungraded  
Formal protection in terms of zoning scheme regulations (Ungraded)

- Demolition could be considered
- HWC permit of approval required for

Proposed conservation/Special areas:

**References/Sources:**

**Site name:** Stanford House    Type of resource: Building  
Location: 3419 AD: S, E  
Erf/Farm : 1021/  
Address: Longmarket Str Stanford

**Description:**

Ungraded  
Materials:  
Associated landscape features:

Original use:  
Current use:  
Landscape type:  
Design/Style:  
Construction date:  
Historical period in which constructed:  
Theme:

**Historical information:**

**Heritage Status:**

Previous status under National Monuments Act:

Current status under National Heritage Resources Act: Older than 60  
Responsible heritage authority: HWC

Approved grading:

Suggested grading:

Significance:

Constraints and Opportunities:

Heritage Management Recommendations:

Ungraded  
Formal protection in terms of zoning scheme regulations (Ungraded)

- Demolition could be considered
- HWC permit of approval required for

Proposed conservation/Special areas:

**References/Sources:**

**Site name:** Stanford House    Type of resource: Building  
Location: 3419 AD: S, E  
Erf/Farm : 434/  
Address: De Bruyn Str Stanford

**Description:**

Ungraded  
Materials:  
Associated landscape features:

Original use:  
Current use:  
Landscape type:  
Design/Style:  
Construction date:  
Historical period in which constructed:  
Theme:

**Historical information:**

**Heritage Status:**

Previous status under National Monuments Act:

Current status under National Heritage Resources Act: Older than 60  
Responsible heritage authority: HWC

Approved grading:

Suggested grading:

Significance:

Constraints and Opportunities:

Heritage Management Recommendations:

Ungraded  
Formal protection in terms of zoning scheme regulations (Ungraded)

- Demolition could be considered
- HWC permit of approval required for

Proposed conservation/Special areas:

**References/Sources:**

**Site name:** Stanford House    Type of resource: Building  
Location: 3419 AD: S, E  
Erf/Farm : 224/  
Address: Bezuidenhout Stanford

**Description:**

Ungraded  
Materials:  
Associated landscape features:

Original use:  
Current use:  
Landscape type:  
Design/Style:  
Construction date:  
Historical period in which constructed:  
Theme:

**Historical information:**

**Heritage Status:**

Previous status under National Monuments Act:

Current status under National Heritage Resources Act: Older than 60  
Responsible heritage authority: HWC

Approved grading:

Suggested grading:

Significance:

Constraints and Opportunities:

Heritage Management Recommendations:

Ungraded  
Formal protection in terms of zoning scheme regulations (Ungraded)

- Demolition could be considered
- HWC permit of approval required for

Proposed conservation/Special areas:

**References/Sources:**

**Site name:** Stanford House    Type of resource: Building  
Location: 3419 AD: S, E  
Erf/Farm : 220/  
Address: Bezuidenhout Stanford

**Description:**

Ungraded  
Materials:  
Associated landscape features:

Original use:  
Current use:  
Landscape type:  
Design/Style:  
Construction date:  
Historical period in which constructed:  
Theme:

**Historical information:**

**Heritage Status:**

Previous status under National Monuments Act:

Current status under National Heritage Resources Act: Older than 60  
Responsible heritage authority: HWC

Approved grading:

Suggested grading:

Significance:

Constraints and Opportunities:

Heritage Management Recommendations:

Ungraded  
Formal protection in terms of zoning scheme regulations (Ungraded)

- Demolition could be considered
- HWC permit of approval required for

Proposed conservation/Special areas:

**References/Sources:**

**Site name:** Stanford House    Type of resource: Building  
Location: 3419 AD: S, E  
Erf/Farm : 217/  
Address: Bezuidenhout Stanford

**Description:**

Ungraded  
Materials:  
Associated landscape features:

Original use:  
Current use:  
Landscape type:  
Design/Style:  
Construction date:  
Historical period in which constructed:  
Theme:

**Historical information:**

**Heritage Status:**

Previous status under National Monuments Act:

Current status under National Heritage Resources Act: Older than 60  
Responsible heritage authority: HWC

Approved grading:

Suggested grading:

Significance:

Constraints and Opportunities:

Heritage Management Recommendations:

Ungraded  
Formal protection in terms of zoning scheme regulations (Ungraded)

- Demolition could be considered
- HWC permit of approval required for

Proposed conservation/Special areas:

**References/Sources:**

**Site name:** Stanford House    Type of resource: Building  
Location: 3419 AD: S, E  
Erf/Farm : 899/  
Address: Bezuidenhout Stanford

**Description:**

Ungraded  
Materials:  
Associated landscape features:

Original use:  
Current use:  
Landscape type:  
Design/Style:  
Construction date:  
Historical period in which constructed:  
Theme:

**Historical information:**

**Heritage Status:**

Previous status under National Monuments Act:

Current status under National Heritage Resources Act: Older than 60  
Responsible heritage authority: HWC

Approved grading:

Suggested grading:

Significance:

Constraints and Opportunities:

Heritage Management Recommendations:

Ungraded  
Formal protection in terms of zoning scheme regulations (Ungraded)

- Demolition could be considered
- HWC permit of approval required for

Proposed conservation/Special areas:

**References/Sources:**

**Site name:** Stanford House    Type of resource: Building  
Location: 3419 AD: S, E  
Erf/Farm : 2090/  
Address: Stanford

**Description:**

Ungraded  
Materials:  
Associated landscape features:

Original use:  
Current use:  
Landscape type:  
Design/Style:  
Construction date:  
Historical period in which constructed:  
Theme:

**Historical information:**

**Heritage Status:**

Previous status under National Monuments Act:

Current status under National Heritage Resources Act: Older than 60  
Responsible heritage authority: HWC

Approved grading:

Suggested grading:

Significance:

Constraints and Opportunities:

Heritage Management Recommendations:

Ungraded  
Formal protection in terms of zoning scheme regulations (Ungraded)

- Demolition could be considered
- HWC permit of approval required for

Proposed conservation/Special areas:

**References/Sources:**

**Site name:** Stanford House    Type of resource: Building  
Location: 3419 AD: S, E  
Erf/Farm : 1776/  
Address: Quick Str Stanford

**Description:**

Ungraded  
Materials:  
Associated landscape features:

Original use:  
Current use:  
Landscape type:  
Design/Style:  
Construction date:  
Historical period in which constructed:  
Theme:

**Historical information:**

**Heritage Status:**

Previous status under National Monuments Act:

Current status under National Heritage Resources Act: Older than 60  
Responsible heritage authority: HWC

Approved grading:

Suggested grading:

Significance:

Constraints and Opportunities:

Heritage Management Recommendations:

Ungraded  
Formal protection in terms of zoning scheme regulations (Ungraded)

- Demolition could be considered
- HWC permit of approval required for

Proposed conservation/Special areas:

**References/Sources:**

**Site name:** Stanford House    Type of resource: Building  
Location: 3419 AD: S, E  
Erf/Farm : 151/  
Address: Longmarket Str Stanford

**Description:**

Ungraded  
Materials:  
Associated landscape features:

Original use:  
Current use:  
Landscape type:  
Design/Style:  
Construction date:  
Historical period in which constructed:  
Theme:

**Historical information:**

**Heritage Status:**

Previous status under National Monuments Act:

Current status under National Heritage Resources Act: Older than 60  
Responsible heritage authority: HWC

Approved grading:

Suggested grading:

Significance:

Constraints and Opportunities:

Heritage Management Recommendations:

Ungraded  
Formal protection in terms of zoning scheme regulations (Ungraded)

- Demolition could be considered
- HWC permit of approval required for

Proposed conservation/Special areas:

**References/Sources:**

**Site name:** Stanford House    Type of resource: Building  
Location: 3419 AD: S, E  
Erf/Farm : 441/  
Address: Du Toit Str Stanford

**Description:**

Ungraded  
Materials:  
Associated landscape features:

Original use:  
Current use:  
Landscape type:  
Design/Style:  
Construction date:  
Historical period in which constructed:  
Theme:

**Historical information:**

**Heritage Status:**

Previous status under National Monuments Act:

Current status under National Heritage Resources Act: Older than 60  
Responsible heritage authority: HWC

Approved grading:

Suggested grading:

Significance:

Constraints and Opportunities:

Heritage Management Recommendations:

Ungraded  
Formal protection in terms of zoning scheme regulations (Ungraded)

- Demolition could be considered
- HWC permit of approval required for

Proposed conservation/Special areas:

**References/Sources:**

**Site name:** Stanford House    Type of resource: Building  
Location: 3419 AD: S, E  
Erf/Farm : 743/  
Address: Du Toit Str Stanford

**Description:**

Ungraded  
Materials:  
Associated landscape features:

Original use:  
Current use:  
Landscape type:  
Design/Style:  
Construction date:  
Historical period in which constructed:  
Theme:

**Historical information:**

**Heritage Status:**

Previous status under National Monuments Act:

Current status under National Heritage Resources Act: Older than 60  
Responsible heritage authority: HWC

Approved grading:

Suggested grading:

Significance:

Constraints and Opportunities:

Heritage Management Recommendations:

Ungraded  
Formal protection in terms of zoning scheme regulations (Ungraded)

- Demolition could be considered
- HWC permit of approval required for

Proposed conservation/Special areas:

**References/Sources:**

**Site name:** Stanford House    Type of resource: Building  
Location: 3419 AD: S, E  
Erf/Farm : 742/  
Address: Du Toit Str Stanford

**Description:**

Ungraded  
Materials:  
Associated landscape features:

Original use:  
Current use:  
Landscape type:  
Design/Style:  
Construction date:  
Historical period in which constructed:  
Theme:

**Historical information:**

**Heritage Status:**

Previous status under National Monuments Act:

Current status under National Heritage Resources Act: Older than 60  
Responsible heritage authority: HWC

Approved grading:

Suggested grading:

Significance:

Constraints and Opportunities:

Heritage Management Recommendations:

Ungraded  
Formal protection in terms of zoning scheme regulations (Ungraded)

- Demolition could be considered
- HWC permit of approval required for

Proposed conservation/Special areas:

**References/Sources:**

**Site name:** Stanford House    Type of resource: Building  
Location: 3419 AD: S, E  
Erf/Farm : 287/  
Address: Stanford

**Description:**

Ungraded  
Materials:  
Associated landscape features:

Original use:  
Current use:  
Landscape type:  
Design/Style:  
Construction date:  
Historical period in which constructed:  
Theme:

**Historical information:**

**Heritage Status:**

Previous status under National Monuments Act:

Current status under National Heritage Resources Act: Older than 60  
Responsible heritage authority: HWC

Approved grading:

Suggested grading:

Significance:

Constraints and Opportunities:

Heritage Management Recommendations:

Ungraded  
Formal protection in terms of zoning scheme regulations (Ungraded)

- Demolition could be considered
- HWC permit of approval required for

Proposed conservation/Special areas:

**References/Sources:**

**Site name:** Die Bron Die Oog Type of resource: Natural resource  
Location: 3419AD: 34 27' 6.17" S, 19 27' 12.47" E  
Erf/Farm : /  
Address: Stanford

**Description:**

Fresh water spring and associated system of irrigation furrows

Materials:

Associated landscape features: Irrigation furrows

Mechanical pump

Original use: Fresh water spring

Current use: Natural

Landscape type: Natural

Design/Style:

Construction date:

Historical period in which constructed:

Theme: Historic settlement pattern

Water

**Historical information:**

**Heritage Status:**

Previous status under National Monuments Act:

Current status under National Heritage Resources Act:

Approved grading:

Suggested grading: 3A

Responsible heritage authority:

Significance: Considerable historic, technological, environmental significance. The use of the spring was closely related to the development of Stanford during the mid 19th century and the nature of the grid iron pattern and associated lei water system.

Constraints and Opportunities: Opportunity for the incorporation into a heritage trail linking the "die oog" to the existing riverside trail. Opportunity for appropriate structure to enable viewing of spring and historical pump mechanism.

Heritage Management Recommendations:

Proposed conservation/Special areas:

**References/Sources:**

**Site name:** Stanford House    Type of resource: Building    740  
Location: 3419 AD: S, E  
Erf/Farm : 433/  
Address: 47 Langmark Str Stanford

**Description:**

Materials:  
Associated landscape features:

Original use:  
Current use:  
Landscape type:  
Design/Style:  
Construction date:  
Historical period in which constructed:  
Theme:

**Historical information:**

**Heritage Status:**

Previous status under National Monuments Act:

Current status under National Heritage Resources Act: Older than 60  
Responsible heritage authority:

Approved grading:

Suggested grading:

Significance:

Constraints and Opportunities:

Heritage Management Recommendations:

Ungraded

Formal protection in terms of zoning scheme regulations (Ungraded)

- Demolition could be considered
- HWC permit of approval required for demolition

Proposed conservation/Special areas:

**References/Sources:**

**Site name:** Stanford House    Type of resource: Building    788  
Location: 3419 AD: S, E  
Erf/Farm : 172/  
Address: 42 Bezuidenhout Str Stanford

**Description:**

Ungraded  
Materials:  
Associated landscape features:

Original use:  
Current use:  
Landscape type:  
Design/Style:  
Construction date:  
Historical period in which constructed:  
Theme:

**Historical information:**

**Heritage Status:**

Previous status under National Monuments Act:

Current status under National Heritage Resources Act: Older than 60  
Responsible heritage authority: HWC

Approved grading:

Suggested grading:

Significance:

Constraints and Opportunities:

Heritage Management Recommendations:

Ungraded  
Formal protection in terms of zoning scheme regulations (Ungraded)

- Demolition could be considered
- HWC permit of approval required for Proposed conservation/Special areas:

**References/Sources:**

**Site name:** Stanford House    Type of resource: Building  
Location: 3419 AD: S, E  
Erf/Farm : 84/  
Address: Stanford

**Description:**

Materials:  
Associated landscape features:

Original use:  
Current use:  
Landscape type:  
Design/Style:  
Construction date:  
Historical period in which constructed:  
Theme:

**Historical information:**

**Heritage Status:**

Previous status under National Monuments Act:

Current status under National Heritage Resources Act: Older than 60  
Responsible heritage authority:

Approved grading:

Suggested grading:

Significance:

Constraints and Opportunities:

Heritage Management Recommendations:

Ungraded

Formal protection in terms of zoning scheme regulations (Ungraded)

- Demolition could be considered
- HWC permit of approval required for demolition

Proposed conservation/Special areas:

**References/Sources:**