

**AGENDA of the
Portfolio Committee : Protection Services
19 October 2021
(Also the agenda for the Mayoral Committee Meeting : 28 October 2021)**

**4.
OVERSTRAND FIRE SEASON PLAN FOR FIRE & EMERGENCY SERVICES,
DISASTER MANAGEMENT AND SECURITY SERVICES**

17/8/B

NJ Michaels

Director: Protection Services

27 September 2021

(028) 313 8054

1. Executive Summary

The purpose of this report is for Council to take note of the Fire Season Plan for the Overstrand Fire & Emergency Services, Disaster Management and Security Services department. The fire season annually commences on 1 November and runs until 31 May.

2. Service Delivery and Budget Implementation Plan - IGNITE

Directorate: Protection Services
Fire & Emergency Services, Disaster Management and Security Services

3. Compliance with Strategic Priorities

Provision of democratic, accountable and ethical governance
Provision and maintenance of municipal services
Creation and maintenance of a safe and healthy environment

4. Delegated Authority

Executive Mayor

5. Legal Requirements

Constitution of the Republic of South Africa, 1996
SANS 10090: Community Protection Against Fires
Fire Brigade Services Act, Act 99 of 1987
Community Fire Safety By-Law, P.N. 6454/2007
By-laws of the Overstrand Municipality
Services Delivery and Budget Implementation Plan (SDBIP) 2021/2022

6. Background/Discussion/Evaluation/Conclusion

Background

The fire season runs annually from 1 November until 31 May. The fire season plan is annually implemented across the jurisdiction of Overstrand and

**AGENDA of the
Portfolio Committee : Protection Services
19 October 2021
(Also the agenda for the Mayoral Committee Meeting : 28 October 2021)**

highlights all the high-risk areas and operational readiness activities which took place in preparation for the fire season.

Discussion

The Fire Season Plan highlights the operational readiness and response to incidents as and when the need arises.

7. Financial Implications

None

8. Staff Implications

None

9. Comments from other Departments, Divisions and Administrations

None

10. Annexures

Annexure A: Fire & Emergency Services, Disaster Management and Security Services Fire Season Plan

RECOMMENDATION:

that the Overstrand Fire & Emergency Services, Disaster Management and Security Services Fire Season Plan **be noted**.

RESPONSIBLE OFFICIAL :

**NJ MICHAELS
L SMITH**

TARGET DATE FOR IMPLEMENTATION :

1 NOVEMBER 2021

**AGENDA of the
Portfolio Committee: Protection Services
19 October 2021
(Also the agenda for the Mayoral Committee Meeting: 28 October 2021)**

**4.
OVERSTRAND FIRE SEASON PLAN FOR FIRE & EMERGENCY SERVICES,
DISASTER MANAGEMENT AND SECURITY SERVICES**

17/8/B

NJ Michaels

Director: Protection Services

27 September 2021

(028) 313 8054

**THIS MATTER SERVED BEFORE THE JOINT PORTFOLIO COMMITTEE ON
19 OCTOBER 2021, WHICH COMMITTEE SUPPORTED THE
RECOMMENDATION**

RESPONSIBLE OFFICIAL :

**NJ MICHAELS
L SMITH**

TARGET DATE FOR IMPLEMENTATION :

1 NOVEMBER 2021



**FIRE & EMERGENCY SERVICES,
DISASTER MANAGEMENT AND
SECURITY SERVICES FIRE SEASON PLAN**

A2

Table of Contents

1.	SECTION A	4
1.1.	Definitions	4
2.	SECTION B	6
2.1.	Purpose of the Season Plan	6
2.2.	Aim of the Fire Season Plan	6
2.3.	Objectives during the Fire Season	6
3.	SECTION C	7
3.1.	Command and Control / Incident Support Senior Officials	7
3.2.	Organogram: Top Management Team	8
3.3.	Organogram: Disaster Management Team	9
3.4.	Organogram : Operations Team	10
3.5.	Organogram: Fire Safety	11
3.6.	Organogram: Safety and Security & CCTV	12
3.7.	Organogram: Incident Command Centre, Emergency Control & Support Services	13
3.8.	Proposed Incident Command Structure during emergencies	14
4.	SECTION D	15
4.1.	Operational Working Hours	15
4.2.	Shift roster duty cycle	16
4.3.	Fire Operations: Weight of Response	23
4.4.	Kleinmond Fire and Rescue station	23
4.5.	Gansbaai Fire and Rescue station	23
4.6.	Hermanus Fire and Rescue station	24
4.7.	Shift roster	24
5.	SECTION E	26
5.1.	Fire and Rescue Appliances	26
5.2.	Provincial Fire and Disaster Management Assistance	27
5.3.	Questions to ask before calling helicopters	30
5.4.	SWOT Analysis	31
6.	SECTION F	32
6.1.	Proactive activities 1 January 2021 – 31 August 2021	32
6.2.	Strategic Policy	35
6.3.	Strategic Planning	36
6.4.	Greater Overberg Fire Protection Association	36
6.5.	Overberg District Municipality and Disaster Management	36
7.	SECTION G	37

AB

- 7.1. Overstrand Municipal Area Fire Risk Areas37
- 7.2. Top Fire Risk Areas37
- 8. SECTION H41
 - 8.1. Prevention, control and management of Covid-19 during incidents41
- 9. SECTION I42
 - 9.1. Emergency Contact Numbers42

1. SECTION A

1.1. Definitions

- 1.1.1. **Branch:** That organization level having functional, geographical, or jurisdictional responsibility for major parts of the incident operations. The branch level is organizationally between Section and Division/Group in the Operations Section. And between Section and Units in the Logistics Section. Branches are identified by the use of Roman Numerals, by function, or by jurisdictional name.
- 1.1.2. **Command Staff:** The command Staff consists of the public Information Officer, Safety Officer, and Liaison Officer. They report directly to the Incident Commander.
- 1.1.3. **Disaster (Disaster Management Act, Act 57 of 2001):** When a disastrous (as per definition in the Disaster Management Act 57 of 2007) event occurs in the jurisdiction of the municipality and the Municipal Manager regards the situation as a disaster. A progressive or sudden, widespread or localised, natural or human-caused occurrence which causes or threaten to cause:
- Death, injuries or disease;
 - Damage to property , infrastructure or the environment; or
 - Disruption of the life of a community; and
 - Is of a magnitude that exceeds the ability to those affected by the disaster to cope with its effects using only their own resources.
- 1.1.4. **Division:** That organization level having responsibility for operations within a defined geographic area. The Division level is organizationally between the Strike Team and the Branch.
- 1.1.5. **Emergency:** a situation that poses an immediate risk to life, health, property or the environment and normal procurement procedures cannot be followed.
- 1.1.6. **Group:** Groups are established to divide the incident into functional areas of operation. Groups are located between Branches (when activated) and Resources in the Operations Section.
- 1.1.7. **Incident Command System:** The ICS is a management system designed to enable effective and efficient domestic incident management by integrating a combination of facilities, equipment, personnel, procedures, and communication operating within a common organizational structure, designed to enable effective and efficient domestic incident management. A key principle of ICS is its flexibility. The ICS organization may be expanded easily from a very small size for routine operations to a larger organization capable of handling catastrophic events.
- 1.1.8. **Major Incident:** When an emergency requires additional or external resources to bring the situation (**emergency**) under control. Activation of these resources is done by the Chief Fire Officer or Incident Commander after approval is granted by Director or MM(Municipal Manager)

AS

- 1.1.9. **Section:** The organization level having functional responsibility for primary segments of incident management (Operations, Planning, Finance/Administration). The Section level is organizationally between Branch and Incident Commander.
- 1.1.10. **Single Resource:** An individual piece of equipment and its personnel complement, or an established crew or team of individuals with an identified work supervisor that can be used on an incident.
- 1.1.11. **Strike Team:** Specified combinations of the same kind and type of resource, with common communications and a leader.
- 1.1.12. **Task Force:** A group of resources with common communication and its leader that may be pre-established and sent to an incident or formed at an incident.
- 1.1.13. **Unit:** The organizational element having functional responsibility for a specific incident planning, logistics, or finance/administration activity.
- 1.1.14. **Wildland Urban Interface:** Is the location where homes and structures are built among forests, shrubs or grassland (Radeoff et al. 2005)

A6

2. SECTION B

2.1. Purpose of the Season Plan

To focus on the management of potential emergency threats

2.2. Aim of the Fire Season Plan

To identify, reduce or prevent incidents from happening and soften the impact of those incidents that are inevitable.

2.3. Objectives during the Fire Season

To improve emergency preparedness in vulnerable communities and ensure appropriate response to emergencies and disaster within the Overstrand Municipality.

2.4. Functions during large incident

The call-out procedure must be followed and the Emergency Control Room will activate the additional (internal) resources at the request of the Incident Commander. The on-duty Senior Officer must inform the Chief Fire Officer, who will in turn inform the following:

- Director: Protection Services
- Municipal Manager

The Chief Fire Officer will ascertain whether there is a need to establish a JOC (Joint Operations Centre). Should a JOC be established, decisions will be taken on where it will be established, and the necessary arrangements will be made by the Incident Command Centre.

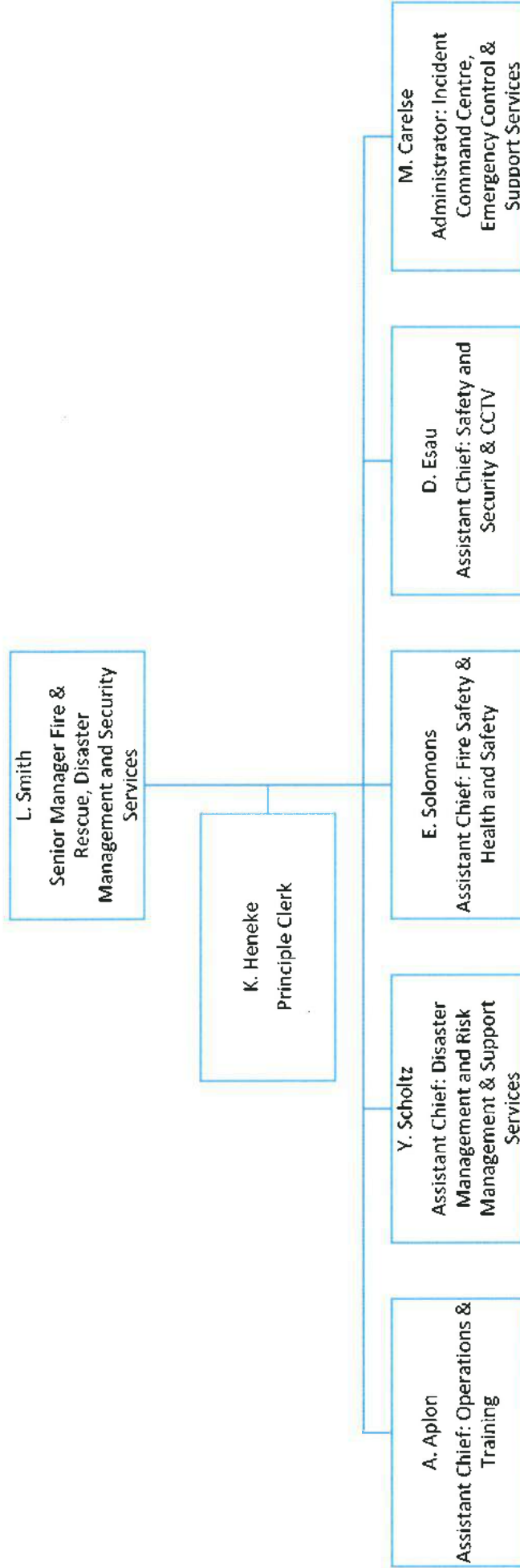
A7

3. SECTION C

3.1. Command and Control / Incident Support Senior Officials

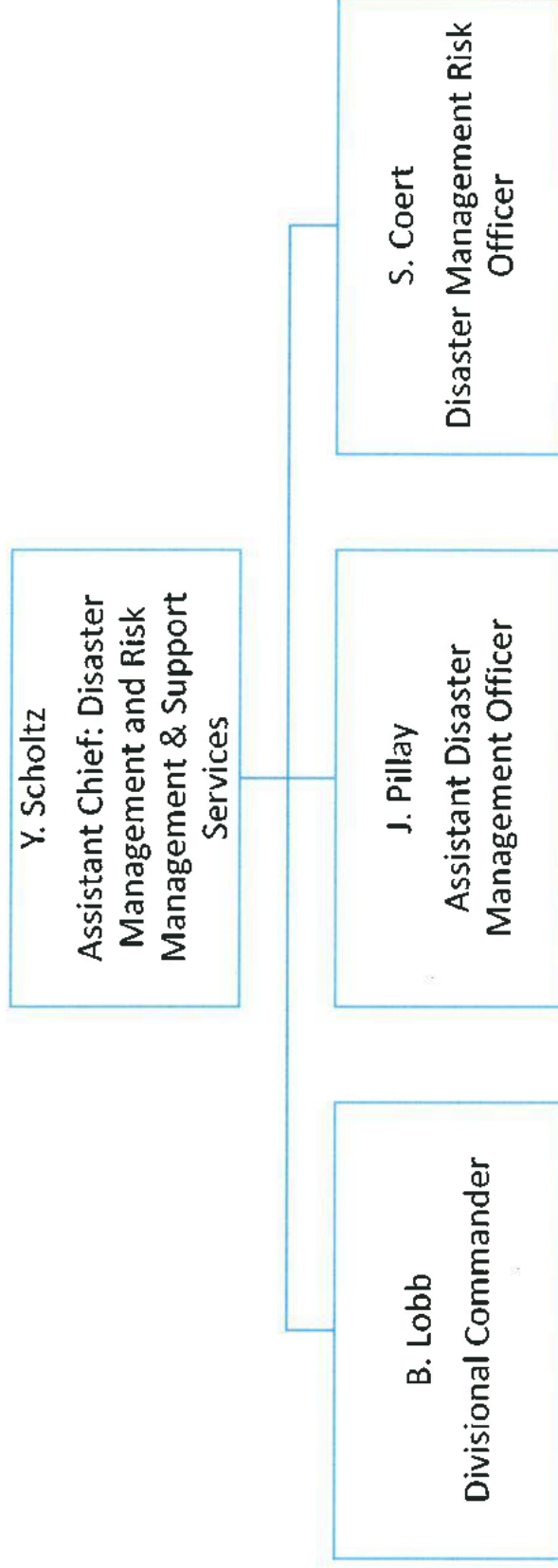
Chief Fire Officer	: Lester Smith
Assistant Chief: Disaster Management	: Yulanda Scholtz
Divisional Commander	: Brian Lobb
Assistant Disaster Management Officer	: Joan Pillay
Disaster Management Risk Officer	: Sarolyn Coert
Assistant Chief: Operations	: Angelo Aplon
Assistant Chief: Fire Safety	: Enrico Solomons
Assistant Chief: Safety & Security	: Dawie Esau
Administrator	: Meagan Carelse

3.2. Organogram: Top Management Team



As

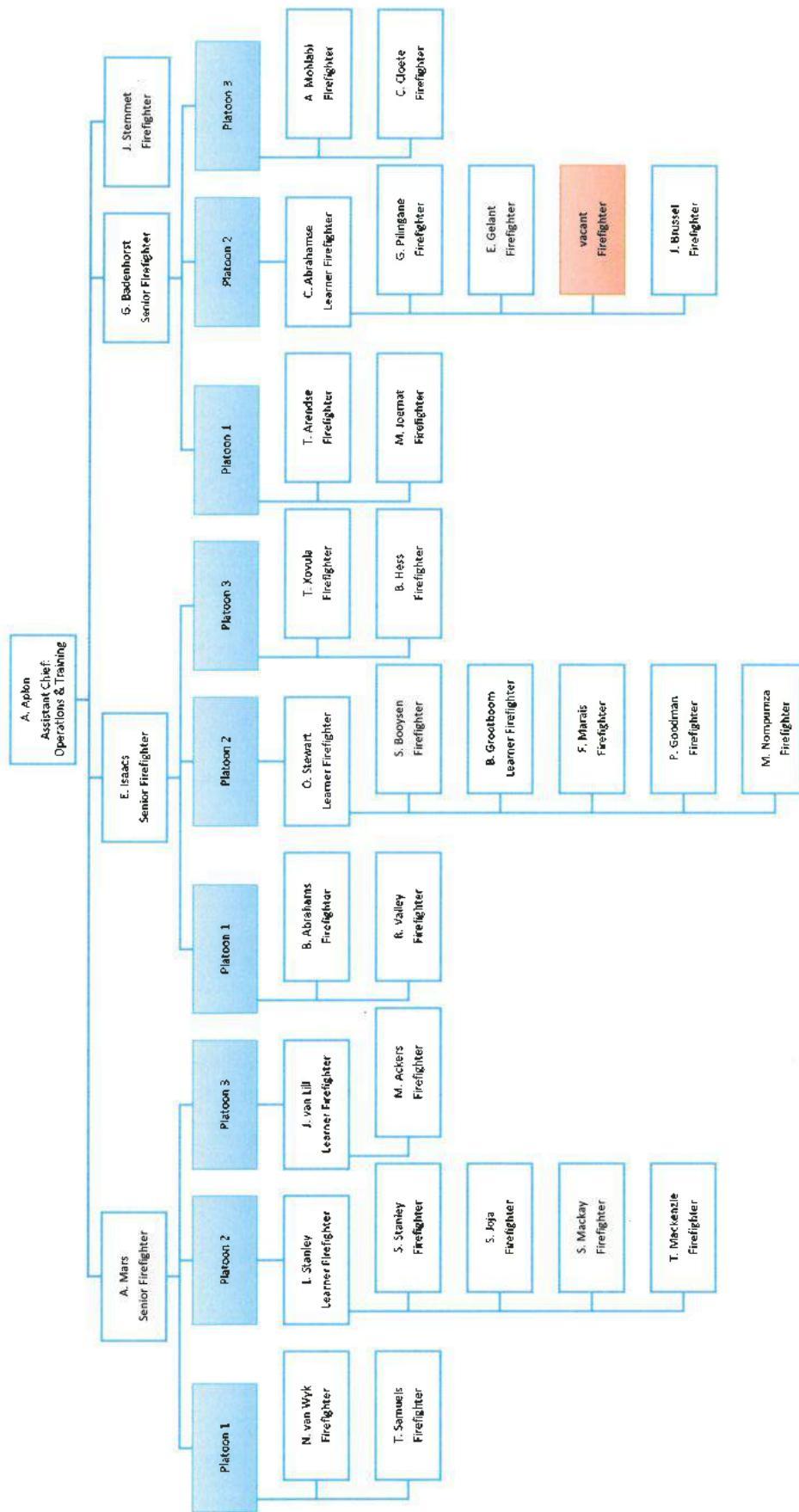
3.3. Organogram: Disaster Management Team



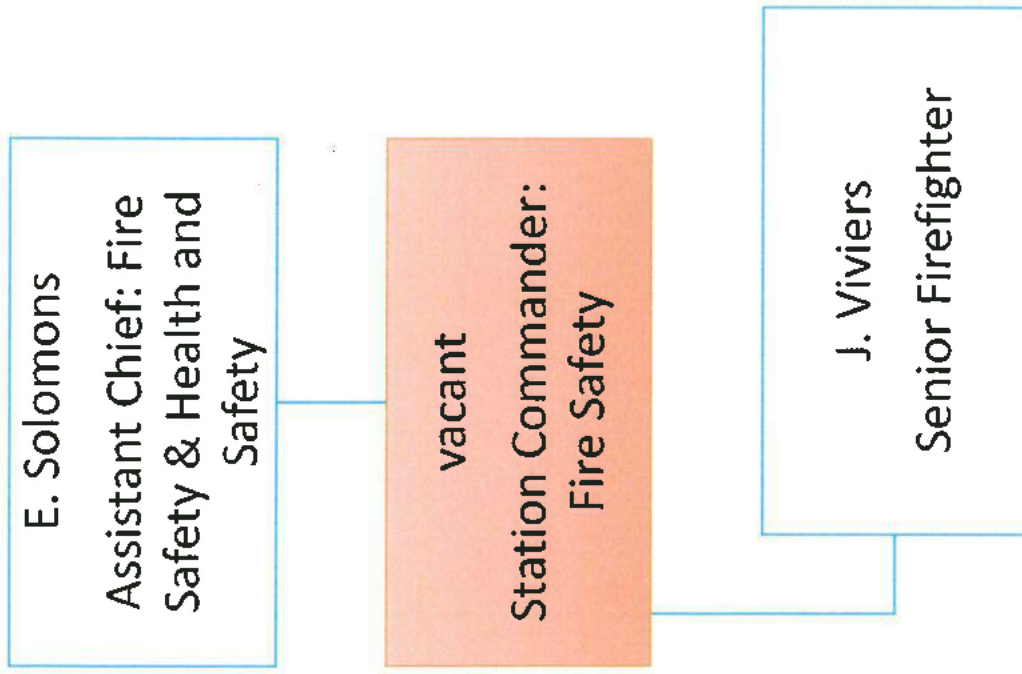
A9

A10

3.4. Organogram : Operations Team

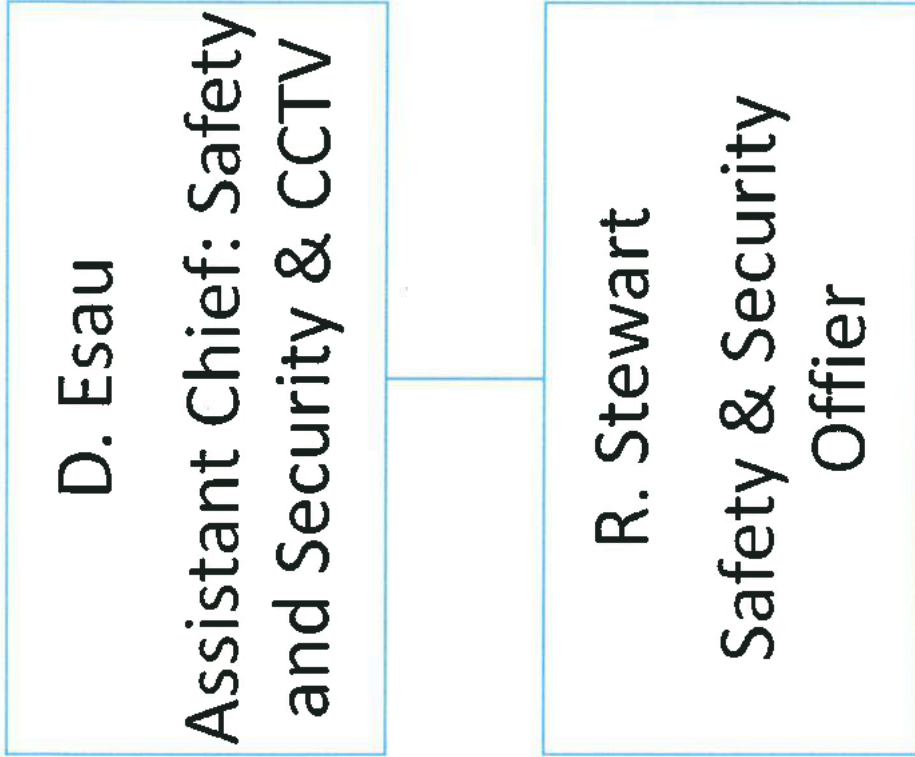


3.5. Organogram: Fire Safety

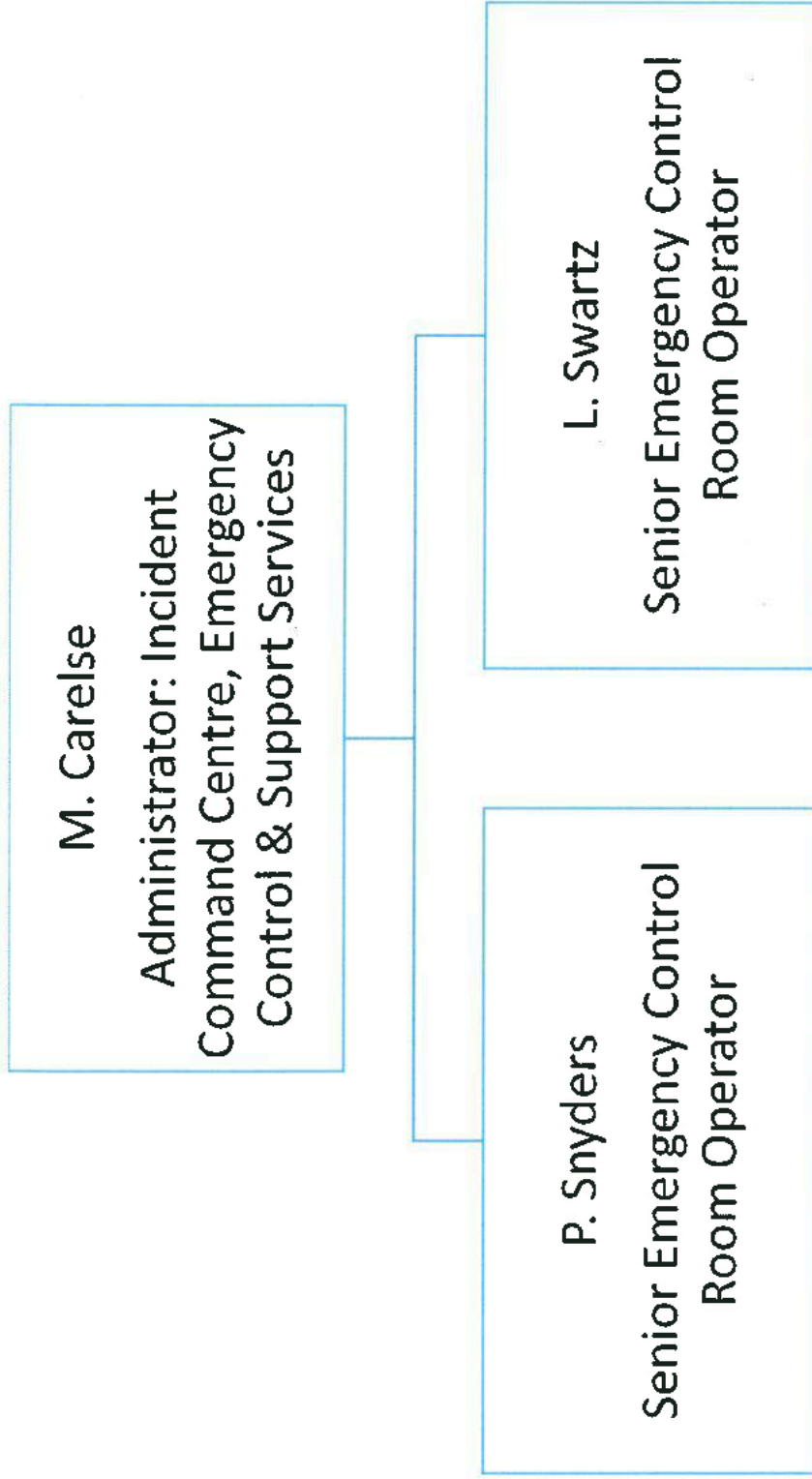


A12

3.6. Organogram: Safety and Security & CCTV



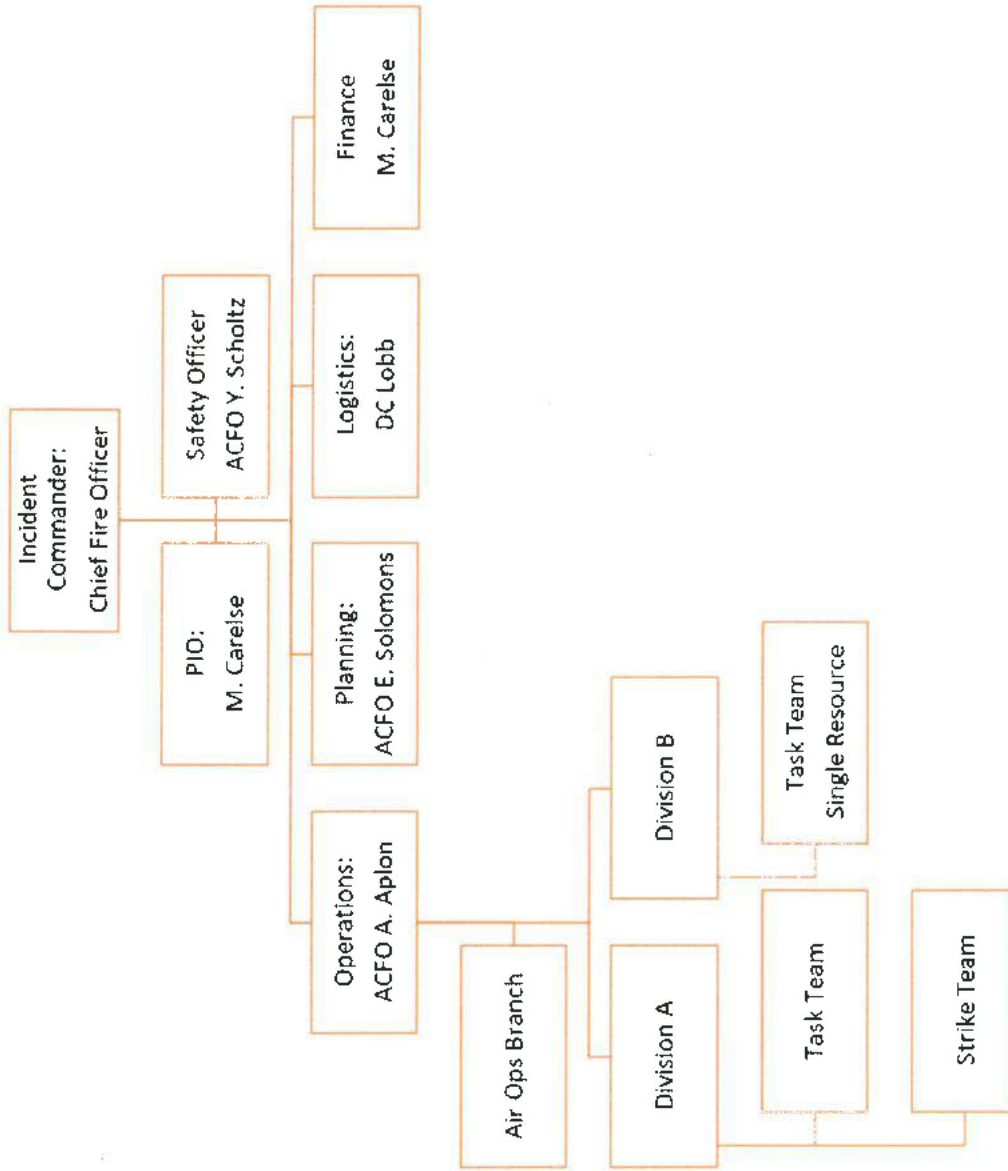
3.7. Organogram: Incident Command Centre, Emergency Control & Support Services



AB

A14

3.8. Proposed Incident Command Structure during emergencies



4. SECTION D

4.1. Operational Working Hours

Hermanus Fire Station

Shift System 24hour shifts

Gansbaai Fire Station

Shift System 24-hour shifts

Kleinmond Fire Station

Shift System 24-hour shifts

Senior Duty Officer

Assistant Chief Fire Officer or his delegated will be available during office hour. A senior officer will be on standby after hours and weekends.

A16

4.2. Shift roster duty cycle

November 2021

Monday	Tuesday	Wednesday	Thursday	Friday	Saturday	Sunday
1 B. Lobb, M. Carelse, R. Stewart, J. Viviers & L. Smith	2 B. Lobb, M. Carelse, R. Stewart, J. Viviers & L. Smith	3 B. Lobb, M. Carelse, R. Stewart, J. Viviers & L. Smith	4 B. Lobb, M. Carelse, R. Stewart, J. Viviers & L. Smith	5 B. Lobb, M. Carelse, R. Stewart, J. Viviers & L. Smith	6 B. Lobb, M. Carelse, R. Stewart, J. Viviers & L. Smith	7 B. Lobb, M. Carelse, R. Stewart, J. Viviers & L. Smith
8 A. Aplon, S. Coert, D. Esau	9 A. Aplon, S. Coert, D. Esau	10 A. Aplon, S. Coert, D. Esau	11 A. Aplon, S. Coert, D. Esau	12 A. Aplon, S. Coert, D. Esau	13 A. Aplon, S. Coert, D. Esau	14 A. Aplon, S. Coert, D. Esau
15 Y. Scholtz, M. Carelse, R. Stewart	16 Y. Scholtz, M. Carelse, R. Stewart	17 Y. Scholtz, M. Carelse, R. Stewart	18 Y. Scholtz, M. Carelse, R. Stewart	19 Y. Scholtz, M. Carelse, R. Stewart	20 Y. Scholtz, M. Carelse, R. Stewart	21 Y. Scholtz, M. Carelse, R. Stewart
22 E. Solomons, J. Pillay, D. Esau	23 E. Solomons, J. Pillay, D. Esau	24 E. Solomons, J. Pillay, D. Esau	25 E. Solomons, J. Pillay, D. Esau	26 E. Solomons, J. Pillay, D. Esau	27 E. Solomons, J. Pillay, D. Esau	28 E. Solomons, J. Pillay, D. Esau
29 B. Lobb, M. Carelse, R. Stewart, J. Viviers & L. Smith	30 B. Lobb, M. Carelse, R. Stewart, J. Viviers & L. Smith					

EVENTS

December 2021

Monday	Tuesday	Wednesday	Thursday	Friday	Saturday	Sunday
		1 B. Lobb, M. Carelse, R. Stewart, J. Viviers & L. Smith	2 E. Lobb, M. Carelse, R. Stewart, J. Viviers & L. Smith	3 B. Lobb, M. Carelse, R. Stewart, J. Viviers & L. Smith	4 B. Lobb, M. Carelse, R. Stewart, J. Viviers & L. Smith	5 B. Lobb, M. Carelse, R. Stewart, J. Viviers & L. Smith
6 A. Apion, S. Coert, D. Esau	7 A. Apion, S. Coert, D. Esau	8 A. Apion, S. Coert, D. Esau	9 A. Apion, S. Coert, D. Esau	10 A. Apion, S. Coert, D. Esau	11 A. Apion, S. Coert, D. Esau	12 A. Apion, S. Coert, D. Esau
13 Y. Scholtz, M. Carelse, R. Stewart	14 Y. Scholtz, M. Carelse, R. Stewart	15 Y. Scholtz, M. Carelse, R. Stewart	16 Y. Scholtz, M. Carelse, R. Stewart	17 Y. Scholtz, M. Carelse, R. Stewart	18 Y. Scholtz, M. Carelse, R. Stewart	19 Y. Scholtz, M. Carelse, R. Stewart
20 E. Solomons, J. Pillay, D. Esau	21 E. Solomons, J. Pillay, D. Esau	22 E. Solomons, J. Pillay, D. Esau	23 E. Solomons, J. Pillay, D. Esau	24 E. Solomons, J. Pillay, D. Esau	25 E. Solomons, J. Pillay, D. Esau	26 E. Solomons, J. Pillay, D. Esau
27 B. Lobb, M. Carelse, R. Stewart, J. Viviers & L. Smith	28 B. Lobb, M. Carelse, R. Stewart, J. Viviers & L. Smith	29 B. Lobb, M. Carelse, R. Stewart, J. Viviers & L. Smith	30 B. Lobb, M. Carelse, R. Stewart, J. Viviers & L. Smith	31 B. Lobb, M. Carelse, R. Stewart, J. Viviers & L. Smith		

16 December Day of Reconciliation
 25 December Christmas Day
 26 December Day of Goodwill
 27 December Public Holiday

EVENTS

An

A18

January 2022

Monday	Tuesday	Wednesday	Thursday	Friday	Saturday	Sunday
					1	2
A. Aplon, S. Coert, D. Esou	A. Aplon, S. Coert, D. Esou	A. Aplon, S. Coert, D. Esou	A. Aplon, S. Coert, D. Esou	A. Aplon, S. Coert, D. Esou	B. Lobb, M. Carelse, R. Stewart, J. Viviers & L. Smith	B. Lobb, M. Carelse, R. Stewart, J. Viviers & L. Smith
3	4	5	6	7	8	9
A. Aplon, S. Coert, D. Esou	A. Aplon, S. Coert, D. Esou	A. Aplon, S. Coert, D. Esou	A. Aplon, S. Coert, D. Esou	A. Aplon, S. Coert, D. Esou	A. Aplon, S. Coert, D. Esou	A. Aplon, S. Coert, D. Esou
10	11	12	13	14	15	16
Y. Scholtz, M. Carelse, R. Stewart	Y. Scholtz, M. Carelse, R. Stewart	Y. Scholtz, M. Carelse, R. Stewart	Y. Scholtz, M. Carelse, R. Stewart	Y. Scholtz, M. Carelse, R. Stewart	Y. Scholtz, M. Carelse, R. Stewart	Y. Scholtz, M. Carelse, R. Stewart
17	18	19	20	21	22	23
E. Solomons, J. Pilley, D. Esou	E. Solomons, J. Pilley, D. Esou	E. Solomons, J. Pilley, D. Esou	E. Solomons, J. Pilley, D. Esou	E. Solomons, J. Pilley, D. Esou	E. Solomons, J. Pilley, D. Esou	E. Solomons, J. Pilley, D. Esou
24	25	26	27	28	29	30
B. Lobb, M. Carelse, R. Stewart, J. Viviers & L. Smith	B. Lobb, M. Carelse, R. Stewart, J. Viviers & L. Smith	B. Lobb, M. Carelse, R. Stewart, J. Viviers & L. Smith	B. Lobb, M. Carelse, R. Stewart, J. Viviers & L. Smith	B. Lobb, M. Carelse, R. Stewart, J. Viviers & L. Smith	B. Lobb, M. Carelse, R. Stewart, J. Viviers & L. Smith	B. Lobb, M. Carelse, R. Stewart, J. Viviers & L. Smith
31						
A. Aplon, S. Coert, D. Esou						

1 January New Year's Day

EVENTS

February 2022

Monday	Tuesday	Wednesday	Thursday	Friday	Saturday	Sunday
	1 A. Aplon, S. Coert, D. Esau	2 A. Aplon, S. Coert, D. Esau	3 A. Aplon, S. Coert, D. Esau	4 A. Aplon, S. Coert, D. Esau	5 A. Aplon, S. Coert, D. Esau	6 A. Aplon, S. Coert, D. Esau
7 Y. Scholtz, M. Carelse, R. Stewart	8 Y. Scholtz, M. Carelse, R. Stewart	9 Y. Scholtz, M. Carelse, R. Stewart	10 Y. Scholtz, M. Carelse, R. Stewart	11 Y. Scholtz, M. Carelse, R. Stewart	12 Y. Scholtz, M. Carelse, R. Stewart	13 Y. Scholtz, M. Carelse, R. Stewart
14 E. Solomons, J. Pillay, D. Esau	15 E. Solomons, J. Pillay, D. Esau	16 E. Solomons, J. Pillay, D. Esau	17 E. Solomons, J. Pillay, D. Esau	18 E. Solomons, J. Pillay, D. Esau	19 E. Solomons, J. Pillay, D. Esau	20 E. Solomons, J. Pillay, D. Esau
21 B. Lobb, M. Carelse, R. Stewart, J. Viviers & L. Smith	22 B. Lobb, M. Carelse, R. Stewart, J. Viviers & L. Smith	23 B. Lobb, M. Carelse, R. Stewart, J. Viviers & L. Smith	24 B. Lobb, M. Carelse, R. Stewart, J. Viviers & L. Smith	25 B. Lobb, M. Carelse, R. Stewart, J. Viviers & L. Smith	26 B. Lobb, M. Carelse, R. Stewart, J. Viviers & L. Smith	27 B. Lobb, M. Carelse, R. Stewart, J. Viviers & L. Smith
28 A. Aplon, S. Coert, D. Esau						

EVENTS

A19

March 2022

Monday	Tuesday	Wednesday	Thursday	Friday	Saturday	Sunday
	1 A. Aplon, S. Coert, D. Esau	2 A. Aplon, S. Coert, D. Esau	3 A. Aplon, S. Coert, D. Esau	4 A. Aplon, S. Coert, D. Esau	5 A. Aplon, S. Coert, D. Esau	6 A. Aplon, S. Coert, D. Esau
7 Y. Scholtz, M. Carelse, R. Stewart	8 Y. Scholtz, M. Carelse, R. Stewart	9 Y. Scholtz, M. Carelse, R. Stewart	10 Y. Scholtz, M. Carelse, R. Stewart	11 Y. Scholtz, M. Carelse, R. Stewart	12 Y. Scholtz, M. Carelse, R. Stewart	13 Y. Scholtz, M. Carelse, R. Stewart
14 E. Solomons, J. Pillay, D. Esau	15 E. Solomons, J. Pillay, D. Esau	16 E. Solomons, J. Pillay, D. Esau	17 E. Solomons, J. Pillay, D. Esau	18 E. Solomons, J. Pillay, D. Esau	19 E. Solomons, J. Pillay, D. Esau	20 E. Solomons, J. Pillay, D. Esau
21 B. Lobb, M. Carelse, R. Stewart, J. Viviers & L. Smith	22 B. Lobb, M. Carelse, R. Stewart, J. Viviers & L. Smith	23 B. Lobb, M. Carelse, R. Stewart, J. Viviers & L. Smith	24 B. Lobb, M. Carelse, R. Stewart, J. Viviers & L. Smith	25 B. Lobb, M. Carelse, R. Stewart, J. Viviers & L. Smith	26 B. Lobb, M. Carelse, R. Stewart, J. Viviers & L. Smith	27 B. Lobb, M. Carelse, R. Stewart, J. Viviers & L. Smith
28 A. Aplon, S. Coert, D. Esau	29 A. Aplon, S. Coert, D. Esau	30 A. Aplon, S. Coert, D. Esau	31 A. Aplon, S. Coert, D. Esau			

21 March Human Rights Day

EVENTS

April 2022

Monday	Tuesday	Wednesday	Thursday	Friday	Saturday	Sunday
				1 A. Aplon, S. Coert, D. Esau	2 A. Aplon, S. Coert, D. Esau	3 A. Aplon, S. Coert, D. Esau
4 Y. Scholtz, M. Carelse, R. Stewart	5 Y. Scholtz, M. Carelse, R. Stewart	6 Y. Scholtz, M. Carelse, R. Stewart	7 Y. Scholtz, M. Carelse, R. Stewart	8 Y. Scholtz, M. Carelse, R. Stewart	9 Y. Scholtz, M. Carelse, R. Stewart	10 Y. Scholtz, M. Carelse, R. Stewart
11 E. Solomons, J. Pillay, D. Esau	12 E. Solomons, J. Pillay, D. Esau	13 E. Solomons, J. Pillay, D. Esau	14 E. Solomons, J. Pillay, D. Esau	15 E. Solomons, J. Pillay D. Esau	16 E. Solomons, J. Pillay, D. Esau	17 E. Solomons, J. Pillay, D. Esau
18 B. Lobb, M. Carelse, R. Stewart, J. Viviers & L. Smith	19 B. Lobb, M. Carelse, R. Stewart, J. Viviers & L. Smith	20 B. Lobb, M. Carelse, R. Stewart, J. Viviers & L. Smith	21 B. Lobb, M. Carelse, R. Stewart, J. Viviers & L. Smith	22 B. Lobb, M. Carelse, R. Stewart, J. Viviers & L. Smith	23 B. Lobb, M. Carelse, R. Stewart, J. Viviers & L. Smith	24 B. Lobb, M. Carelse, R. Stewart, J. Viviers & L. Smith
25 A. Aplon, S. Coert, D. Esau	26 A. Aplon, S. Coert, D. Esau	27 A. Aplon, S. Coert, D. Esau	28 A. Aplon, S. Coert, D. Esau	29 A. Aplon, S. Coert, D. Esau	30 A. Aplon, S. Coert, D. Esau	

15 April Good Friday
18 April Family Day
27 April Freedom Day

EVENTS

A21

May 2022

Monday	Tuesday	Wednesday	Thursday	Friday	Saturday	Sunday
						1 A. Aplon, S. Coert, D. Esau
2 Y. Scholtz, M. Carelse, R. Stewart	3 Y. Scholtz, M. Carelse, R. Stewart	4 Y. Scholtz, M. Carelse, R. Stewart	5 Y. Scholtz, M. Carelse, P. Stewart	6 Y. Scholtz, M. Carelse, R. Stewart	7 Y. Scholtz, M. Carelse, R. Stewart	8 Y. Scholtz, M. Carelse, P. Stewart
9 E. Solomons, J. Pillay D. Esau	10 E. Solomons, J. Pillay D. Esau	11 E. Solomons, J. Pillay D. Esau	12 E. Solomons, J. Pillay D. Esau	13 E. Solomons, J. Pillay D. Esau	14 E. Solomons, J. Pillay D. Esau	15 E. Solomons, J. Pillay D. Esau
16 S. Lobb, M. Carelse, R. Stewart, J. Viviers & L. Smith	17 S. Lobb, M. Carelse, R. Stewart, J. Viviers & L. Smith	18 S. Lobb, M. Carelse, R. Stewart, J. Viviers & L. Smith	19 S. Lobb, M. Carelse, R. Stewart, J. Viviers & L. Smith	20 S. Lobb, M. Carelse, R. Stewart, J. Viviers & L. Smith	21 S. Lobb, M. Carelse, R. Stewart, J. Viviers & L. Smith	22 S. Lobb, M. Carelse, R. Stewart, J. Viviers & L. Smith
23 A. Aplon, S. Coert, D. Esau	24 A. Aplon, S. Coert, D. Esau	25 A. Aplon, S. Coert, D. Esau	26 A. Aplon, S. Coert, D. Esau	27 A. Aplon, S. Coert, D. Esau	28 A. Aplon, S. Coert, D. Esau	29 A. Aplon, S. Coert, D. Esau
30	31					

1 May Workers Day
2 May Public Holiday

EVENTS

A23

4.3. Fire Operations: Weight of Response

4.4. Kleinmond Fire and Rescue station

All available fire engines will be placed at strategic points during New Year's Eve celebrations and mid and post festive season from 3 December 2021 until 9 January 2022, at Pringle Bay, Rooi Els, Betty's Bay and Kleinmond Main beaches with staff compliment

6x Firefighters
 3x Reservists
 8x Volunteer firefighters
 3x EPWP Team Assistants

Kleinmond / Hangklip	1-2 turnout	Resources Refer to fleet
Working hours	24-hour shift	Refer to roster
Standby	24-hours	Additional standby for 24-hours after the end of a shift
Additional staff compliment	<ul style="list-style-type: none"> • Community Volunteer firefighters • Betty's Bay • Pringle Bay 	

4.5. Gansbaai Fire and Rescue station

All available fire engines will be placed at strategic points during New Year's Eve celebrations and mid and post season from 3 December 2021 until 9 January 2022, at Uilenkraalmond, Stanfordsbaai, Franskraal and Pearly Beach with staff compliment

6x Firefighters
 3x Reservist in Gansbaai and 1x Reservices in Stanford
 4x EPWP Team Assistant

Greater Gansbaai	1-2 turnout	Resources Refer to fleet
Working hours	24-hour shift	Refer to roster
Standby	24-hours	Additional standby for 24-hours after the end of a shift

4.6. Hermanus Fire and Rescue station

All available fire engines will be placed at strategic points during New Year's Eve celebrations and mid and post season from 3 December 2021 until 9 January 2022, at Grotto beach, Fisherhaven, Municipal Stores and Hawston Community Pool with staff compliment

- 1x Chief Fire Officer
- 3x Assistant Chiefs
- 1x Station Commander: Fire Safety
- 3x Senior Firefighters
- 15x Firefighters
- 1x Learner Firefighter
- 6x EPWP Team Assistant
- 1x Reservist
- 3x Disaster Management staff to respond to incidents as and when required
- 1x Incident Command Centre staff to respond to incidents as and when required

4.7. Shift roster

	Sunday 10/31/2021	Monday 11/1/2021	Tuesday 11/2/2021	Wednesday 11/3/2021	Thursday 11/4/2021	Friday 11/5/2021	Saturday 11/6/2021
WEEK 1	PLATOON 1	PLATOON 2	PLATOON 3	PLATOON 1	PLATOON 2	PLATOON 3	PLATOON 1
	Sunday 11/7/2021	Monday 11/8/2021	Tuesday 11/9/2021	Wednesday 11/10/2021	Thursday 11/11/2021	Friday 11/12/2021	Saturday 11/13/2021
WEEK 2	PLATOON 3	PLATOON 1	PLATOON 2	PLATOON 3	PLATOON 1	PLATOON 2	PLATOON 3
	Sunday 11/14/2021	Monday 11/15/2021	Tuesday 11/16/2021	Wednesday 11/17/2021	Thursday 11/18/2021	Friday 11/19/2021	Saturday 11/20/2021
WEEK 3	PLATOON 2	PLATOON 3	PLATOON 1	PLATOON 2	PLATOON 3	PLATOON 1	PLATOON 2

	Sunday 11/21/2021	Monday 11/22/2021	Tuesday 11/23/2021	Wednesday 11/24/2021	Thursday 11/25/2021	Friday 11/26/2021	Saturday 11/27/2021
WEEK 1	PLATOON 1	PLATOON 2	PLATOON 3	PLATOON 1	PLATOON 2	PLATOON 3	PLATOON 1
	Sunday 2021/11/28	Monday 11/29/2021	Tuesday 11/30/2021	Wednesday 12/1/2021	Thursday 12/2/2021	Friday 12/3/2021	Saturday 12/4/2021
WEEK 2	PLATOON 3	PLATOON 1	PLATOON 2	PLATOON 3	PLATOON 1	PLATOON 2	PLATOON 3
	Sunday 2021/12/05	Monday 12/6/2021	Tuesday 12/7/2021	Wednesday 12/8/2021	Thursday 12/9/2021	Friday 12/10/2021	Saturday 12/11/2021
WEEK 3	PLATOON 2	PLATOON 3	PLATOON 1	PLATOON 2	PLATOON 3	PLATOON 1	PLATOON 2

	Sunday 12/12/2021	Monday 12/13/2021	Tuesday 12/14/2021	Wednesday 12/15/2021	Thursday 12/16/2021	Friday 12/17/2021	Saturday 12/18/2021
WEEK 1	PLATOON 1	PLATOON 2	PLATOON 3	PLATOON 1	PLATOON 2	PLATOON 3	PLATOON 1
	Sunday 12/19/2021	Monday 12/20/2021	Tuesday 12/21/2021	Wednesday 12/22/2021	Thursday 12/23/2021	Friday 12/24/2021	Saturday 12/25/2021
WEEK 2	PLATOON 3	PLATOON 1	PLATOON 2	PLATOON 3	PLATOON 1	PLATOON 2	PLATOON 3
	Sunday 12/26/2021	Monday 12/27/2021	Tuesday 12/28/2021	Wednesday 12/29/2021	Thursday 12/30/2021	Friday 12/31/2021	Saturday 1/1/2022
WEEK 3	PLATOON 2	PLATOON 3	PLATOON 1	PLATOON 2	PLATOON 3	PLATOON 1	PLATOON 2

A25

	Sunday 1/2/2022	Monday 1/3/2022	Tuesday 1/4/2022	Wednesday 1/5/2022	Thursday 1/6/2022	Friday 1/7/2022	Saturday 1/8/2022
WEEK 1	PLATOON 1	PLATOON 2	PLATOON 3	PLATOON 1	PLATOON 2	PLATOON 3	PLATOON 1
	Sunday 1/9/2022	Monday 1/10/2022	Tuesday 1/11/2022	Wednesday 1/12/2022	Thursday 1/13/2022	Friday 1/14/2022	Saturday 1/15/2022
WEEK 2	PLATOON 3	PLATOON 1	PLATOON 2	PLATOON 3	PLATOON 1	PLATOON 2	PLATOON 3
	Sunday 1/16/2022	Monday 1/17/2022	Tuesday 1/18/2022	Wednesday 1/19/2022	Thursday 1/20/2022	Friday 1/21/2022	Saturday 1/22/2022
WEEK 3	PLATOON 2	PLATOON 3	PLATOON 1	PLATOON 2	PLATOON 3	PLATOON 1	PLATOON 2

	Sunday 1/23/2022	Monday 1/24/2022	Tuesday 1/25/2022	Wednesday 1/26/2022	Thursday 1/27/2022	Friday 1/28/2022	Saturday 1/29/2022
WEEK 1	PLATOON 1	PLATOON 2	PLATOON 3	PLATOON 1	PLATOON 2	PLATOON 3	PLATOON 1
	Sunday 1/30/2022	Monday 1/31/2022	Tuesday 2/1/2022	Wednesday 2/2/2022	Thursday 2/3/2022	Friday 2/4/2022	Saturday 2/5/2022
WEEK 2	PLATOON 3	PLATOON 1	PLATOON 2	PLATOON 3	PLATOON 1	PLATOON 2	PLATOON 3
	Sunday 2/6/2022	Monday 2/7/2022	Tuesday 2/8/2022	Wednesday 2/9/2022	Thursday 2/10/2022	Friday 2/11/2022	Saturday 2/12/2022
WEEK 3	PLATOON 2	PLATOON 3	PLATOON 1	PLATOON 2	PLATOON 3	PLATOON 1	PLATOON 2

	Sunday 2/13/2022	Monday 2/14/2022	Tuesday 2/15/2022	Wednesday 2/16/2022	Thursday 2/17/2022	Friday 2/18/2022	Saturday 2/19/2022
WEEK 1	PLATOON 1	PLATOON 2	PLATOON 3	PLATOON 1	PLATOON 2	PLATOON 3	PLATOON 1
	Sunday 2/20/2022	Monday 2/21/2022	Tuesday 2/22/2022	Wednesday 2/23/2022	Thursday 2/24/2022	Friday 2/25/2022	Saturday 2/26/2022
WEEK 2	PLATOON 3	PLATOON 1	PLATOON 2	PLATOON 3	PLATOON 1	PLATOON 2	PLATOON 3
	Sunday 2/27/2022	Monday 2/28/2022	Tuesday 3/1/2022	Wednesday 3/2/2022	Thursday 3/3/2022	Friday 3/4/2022	Saturday 3/5/2022
WEEK 3	PLATOON 2	PLATOON 3	PLATOON 1	PLATOON 2	PLATOON 3	PLATOON 1	PLATOON 2

	Sunday 3/6/2022	Monday 3/7/2022	Tuesday 3/8/2022	Wednesday 3/9/2022	Thursday 3/10/2022	Friday 3/11/2022	Saturday 3/12/2022
WEEK 1	PLATOON 1	PLATOON 2	PLATOON 3	PLATOON 1	PLATOON 2	PLATOON 3	PLATOON 1
	Sunday 3/13/2022	Monday 3/14/2022	Tuesday 3/15/2022	Wednesday 3/16/2022	Thursday 3/17/2022	Friday 3/18/2022	Saturday 3/19/2022
WEEK 2	PLATOON 3	PLATOON 1	PLATOON 2	PLATOON 3	PLATOON 1	PLATOON 2	PLATOON 3
	Sunday 3/20/2022	Monday 3/21/2022	Tuesday 3/22/2022	Wednesday 3/23/2022	Thursday 3/24/2022	Friday 3/25/2022	Saturday 3/26/2022
WEEK 3	PLATOON 2	PLATOON 3	PLATOON 1	PLATOON 2	PLATOON 3	PLATOON 1	PLATOON 2

	Sunday 3/27/2022	Monday 3/28/2022	Tuesday 3/29/2022	Wednesday 3/30/2022	Thursday 3/31/2022	Friday 4/1/2022	Saturday 4/2/2022
WEEK 1	PLATOON 1	PLATOON 2	PLATOON 3	PLATOON 1	PLATOON 2	PLATOON 3	PLATOON 1
	Sunday 4/3/2022	Monday 4/4/2022	Tuesday 4/5/2022	Wednesday 4/6/2022	Thursday 4/7/2022	Friday 4/8/2022	Saturday 4/9/2022
WEEK 2	PLATOON 3	PLATOON 1	PLATOON 2	PLATOON 3	PLATOON 1	PLATOON 2	PLATOON 3
	Sunday 4/10/2022	Monday 4/11/2022	Tuesday 4/12/2022	Wednesday 4/13/2022	Thursday 4/14/2022	Friday 4/15/2022	Saturday 4/16/2022
WEEK 3	PLATOON 2	PLATOON 3	PLATOON 1	PLATOON 2	PLATOON 3	PLATOON 1	PLATOON 2

	Sunday 4/17/2022	Monday 4/18/2022	Tuesday 4/19/2022	Wednesday 4/20/2022	Thursday 4/21/2022	Friday 4/22/2022	Saturday 4/23/2022
WEEK 1	PLATOON 1	PLATOON 2	PLATOON 3	PLATOON 1	PLATOON 2	PLATOON 3	PLATOON 1
	Sunday 4/24/2022	Monday 4/25/2022	Tuesday 4/26/2022	Wednesday 4/27/2022	Thursday 4/28/2022	Friday 4/29/2022	Saturday 4/30/2022
WEEK 2	PLATOON 3	PLATOON 1	PLATOON 2	PLATOON 3	PLATOON 1	PLATOON 2	PLATOON 3
	Sunday 5/1/2022	Monday 5/2/2022	Tuesday 5/3/2022	Wednesday 5/4/2022	Thursday 5/5/2022	Friday 5/6/2022	Saturday 5/7/2022
WEEK 3	PLATOON 2	PLATOON 3	PLATOON 1	PLATOON 2	PLATOON 3	PLATOON 1	PLATOON 2

A26

5. SECTION E

5.1. Fire and Rescue Appliances

CALL SIGN	REG NUMBER	STATUS	LOCATION	DESCRIPTION	CLASS	Model Year
COMMAND VEHICLES						
Delta 1	CEM 23400	On run	Hermanus	Nissan Navara 2.5 TD LWB 4X4	Mobile Command Vehicle – Disaster Management	2015
CV 1	CEM 44444	On run	Hermanus	Ford Ranger DC 4X4	Mobile Command Vehicle	2018
MAJOR PUMPERS						
Engine 1-1	CEM 37463	On run	Hermanus	Mercedes Benz Ateco 1328	Major Pumper type I	2014
Engine 2-1	CEM 7532	On run	Gansbaai	Iveco (4X4)	Major Pumper type III	2019
Engine 3-1	CEM 10226	On run	Kleinmond	Mercedes Benz Ateco 1328	Major Pumper type III	2009
PUMPERS						
Pump 1	CEM 30714	On run	Kleinmond	Toyota Hino 4X4	All Terrain Appliance	2018
Pump 2	Chassis #2	Off run	Unallocated	Isuzu FTS 750	All Terrain Appliance	2019
Pump 3	CEM 2869	On run	Gansbaai	Tata 713C 4X4	All Terrain Appliance	2006
Pump 4	CEM 14827	OFF RUN	Gansbaai	Mercedes 1617/48 Ecoliner Truck	All Terrain Appliance	1997
Pump 5	Chassis #3	Off run	Unallocated	Isuzu FTS 750	All Terrain Appliance	2019
Pump 6	CEM 1626	On run	Pringle Bay	Mercedes Buffel	All Terrain Appliance	1982
Pump 7	Chassis #1	Off run	Unallocated	Isuzu FTS 750	All Terrain Appliance	2019
RESCUE VEHICLE						
Rescue 1	CEM27756	On ff	Hermanus	Ford Ranger 2x2	Utility Vehicle	2019
SKID UNITS						
Alpha 1	CEM 44284	On run	Hermanus	Toyota Landcruiser	Skid Unit	2018
Alpha 2	CEM 32828	On run	Hermanus	Toyota Landcruiser	Skid Unit	2011
Alpha 3	CEM 28939	On run	Kleinmond/ Pringlebay	Toyota Landcruiser	Skid Unit	2019
Alpha 4	CEM 12594	Off-run	Hermanus	Ford Ranger Subercab 2.2 4x4	Skid Unit	2020
Alpha 5	CEM 14938	On run	Gansbaai	Toyota Hilux 2.7i 4x4	Skid Unit	2006
Alpha 6	CEM 23784	On run	Kleinmond	Nissan Hardbody NP300 4X4	Skid Unit	2011
Alpha 7	CEM 6556	Off-run	Hermanus	Ford Ranger Supercab 2.2 4x4	Skid unit	2020
SUPPORT VEHICLES						
SV01	CEM 38652	On run	Hermanus	Volkswagen Polo Vivo 1.4	Support Vehicle	2015
SV02	CEM 47688	On run	Hermanus	Volkswagen Polo Sedan	Support Vehicle	2019
SV03	CEM 42054	On run	Kleinmond	Nissan NP 300	Utility Vehicle	2017
SV04	CEM 30870	On Run	Hermanus	Ford Ranger Single Cab	Utility Vehicle	2019
SV05	CEM 8219	On run	Hermanus	Ford Ranger XL 4x2 DC	Support Vehicle	2021
SV06	CAM 13012	On run	Bettiesbay	Nissan Hardbody 2.0 4x2 1-ton LDV	Bakkie Unit	2007
SV07	CAM 22989	On run	Gansbaai	Nissan LWB 1-ton 2000CC	Utility Vehicle	2007
SV08	CEM 11565	On run	Hermanus	Ford Ranger XL 4x2 DC	Utility Vehicle	2021

SV09	CEM 13116	On run	Hermanus	Ford Ranger XL 4x2 DC	Utility Vehicle	2021
TRAILERS						
Tango 1	CAM 4600		Kleinmond	Trailer – Rope Rescue		
Tango 2	CAM 4601		Gansbaai	Trailer – Hazmat		
Tango 3	CAM 1266		Gansbaai	Trailer – Portable dam		
Tango 4	CEM 3366		Betty's bay	Trailer- Skid unit		
Tango 5	CEM 25651		Baardskeerderbos	Trailer -Skid Unit		
Tango 6	CAM 30979		Hermanus	Trailer – SCBA compressor		
NB: Senior Officers must utilize marked municipal vehicles with the necessary radio communication for Command and Control of incidents during major incidents. Due to the nature of our inherent fire risk and history of fire related incidents, incident commanders must use municipal vehicles to communicate with other agencies, e.g. WOF, ODM, SAPS, WCEMS etc.						

5.2. Provincial Fire and Disaster Management Assistance

5.2.1. Available aerial resources from 1 December 2021 – 30 April 2022

- AT 802 (Aerial Tractor)
- Huey Helicopter
- Spotter
- Black Hawk Chopper

The Western Cape Provincial Government Fire Brigade Services will assist with aerial support for the initial fire attack with a combination of aerial resources via the ODM. After approval they will cover the costs for the first hour of initial attack aerial firefighting. Aerial resources will be available for extended fire attack operations.

5.2.2. Municipal Boundary and Helicopter Fly Zone

Please see Service Level Agreement between Overstrand Fire & Emergency Services, Disaster Management and Security Services and Overberg Fire and Rescue Services

5.2.3. Possible funding implications & deviation

- Additional shift from 1 November 2020 until 31 May 2021 to man strategic points (16, 24, 25, 26, 27, & 31 December 2020 and 1 -3 January 2021)
- Additional overtime and standby for Senior Officers and Firefighters (Extended incidents)
- Working for Fire Resources (Western Cape Province) Fire Suppressing Support (Ground/ Aerial) and or Transport for Work for Fire Personnel.
- Food rations (extended incidents or on request of Chief Fire Officer/ Incident Commander.
- Additional logistical support from Overstrand Municipal department and/ or other external resources.

5.2.4. Ground Team Firefighting Resources

- Walker Bay Working on Fire Ground crew
- Bredasdorp Working on Fire Ground crew
- Kleinmond Working on Fire Ground crew

- Available Specialized Ground Teams

5.2.5. Call out Procedures

In an emergency, (a situation that poses an immediate risk to life, health, property or the environment) the normal procurement procedures cannot be followed. The following call out procedure for additional resource are:

Air or ground Support request (on emergency) from Chief Fire Officer / Incident Commander to Director: Protection Services / Municipal Manager for approval or approval for overspending. On approval the Chief Fire Officer / Incident Commander will contact District or Provincial Fire Management to dispatch requested resources to location and manage these resources and keep Director / MM informed.

All air and ground support after the necessary approval, resources can be requested via Bredasdorp Dispatch:

Bredasdorp Dispatch	
Fire Line	082 312 9507
Admin Line	028 425 1690
E-Mail Address	Dispatch.bredasdorp@wofire.co.za

Stellenbosch Dispatch	
Fire Line	060 961 8847
Admin Line	021 880 2639
E-mail Address	dispatch.stb.wc@wofire.co.za

Please take note of Brigade Order 05/09/2016

It is the responsibility of the Incident Commander, at particularly large and / or extended incident(s) to inform the office of the Fire Chief that additional resources were utilized to assist Overstrand Fire Services with fire suppression and / or other activities.

The office of the Fire Chief must be informed of additional resources utilized one day after the resources has been utilized: for each day that the resource was utilized.

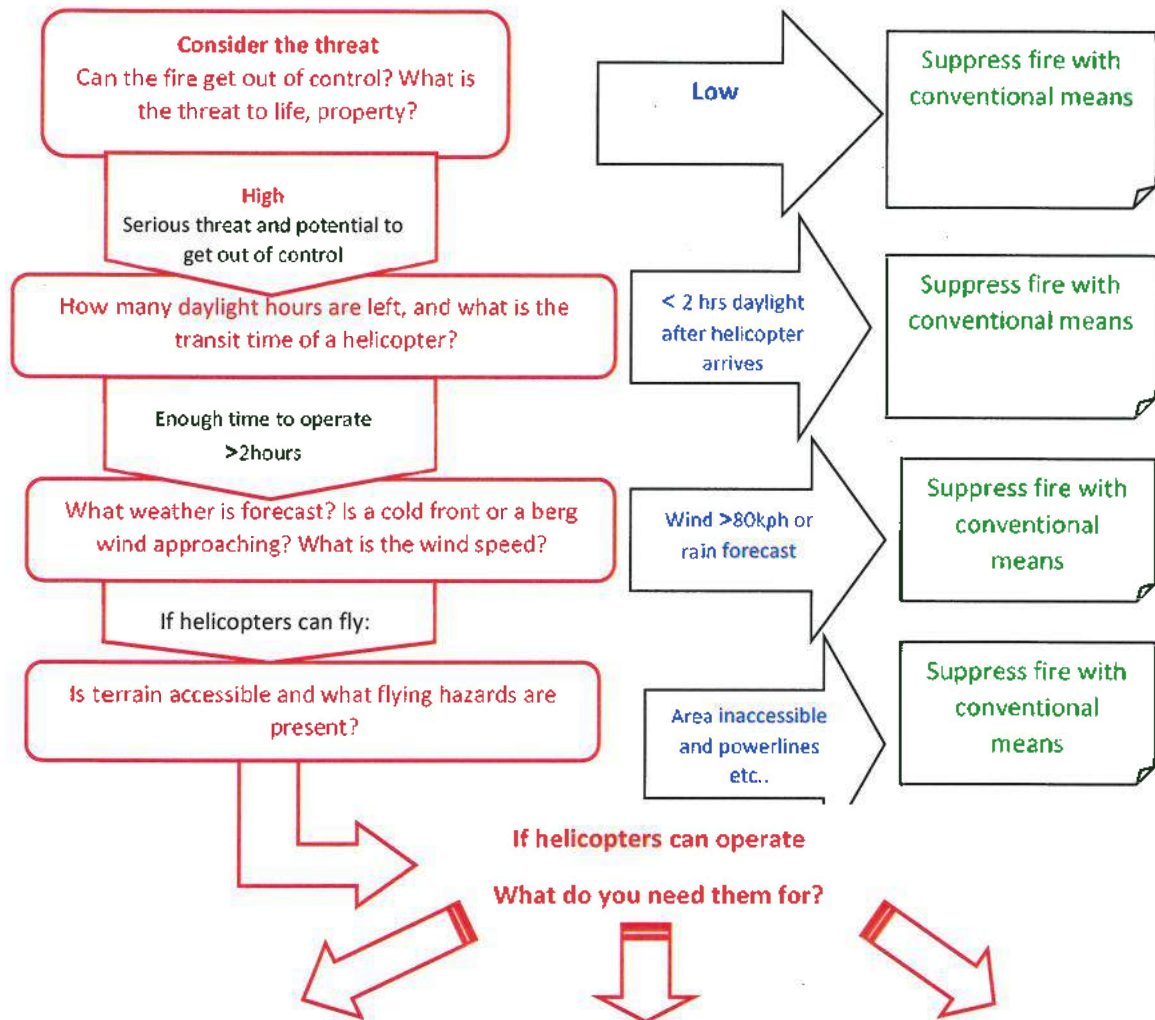
The accepted method to inform the office of the Fire Chief is per email to lestersmith@overstrand.gov.za and firesec@overstrand.gov.za or mcarelse@overstrand.gov.za

The following information will form the base of the email informing the Chief Fire Officer of the resources utilized:

- I. The incident reference number (and fire "name")
- II. The date the resource was utilized

- III. The reason why additional resources were requested
- IV. The type of resource utilized, eg ground teams, aerial, digger loader etc. Include the name of the company
- V. In the event that WOF was utilized, state which team and how the team arrived at the incident
- VI. All other information which is deemed relevant to the situation

5.3. Questions to ask before calling helicopters



Reconnaissance	Trooping	HAFS
<ol style="list-style-type: none"> 1) Prepare LZ for briefing 2) Prepare flight plan 3) Check air to ground comms 4) Check onboard comms 5) Take maps, pens, and camera. 	<ol style="list-style-type: none"> 1) Prepare LZ 2) Appoint emplaning and deplaning officers 3) Brief fire fighters 4) Brief air crew on drop LZ's 	<ol style="list-style-type: none"> 1) Is the potential damage sufficient to warrant extensive expenditure? 2) Are there sufficient firefighters on the fire line? 3) Are adequate water sources close by? 4) Is aviation fuel available? 5) Do you have ground to air comms and other necessary equipment? <p>If answers to above are yes – proceed.</p> <ul style="list-style-type: none"> • Prepare LZ's • Undertake briefings • Appoint ground crew, AAB, check comms.

5.4. SWOT Analysis

Strengths

- Dynamic Leadership
- In the process of addressing Infrastructure, Vehicles, Personnel, Training
- Strong Organizational Structure
- Command Structure (ICS Principles)
- Disciplined Fire Fighters
- 24/7 Available Fire, Rescue and Disaster Management Service
- Hermanus Fire Station Shift System
- All available Fire Engines will be place at strategic point during New Year's eve celebration and in Mid and Post season from 13 December 2019 until 10 January 2020
 - at Pringle Bay, Rooi Els, Betty's Bay, Kleinmond Main beaches,
 - Grotto Beach, Fisherhaven , Municipal Stores and the Pools at Hawston, as well as
 - Uilenkraalsmond, Stanfordsbaai, Franskraal and Pearly Beach with staff compliment.

Opportunities

- Each veld fire incident provides an opportunity to reduce fuel (vegetation)
- Festive season period offers a unique opportunity to apply skills and gain experience in the fire, rescue and disaster management environment
- Opportunity to Create an Safe Environment for Communities, Visitors and Tourists

Weakness

- Limited Infrastructure
- Limited Vehicles (vehicles taken out of service)
- Condition of Vehicles (mechanical failure)
- Limited Equipment
- Condition of Equipment (deteriating equipment)
- Limited Personnel (Man Power)
- One turn out per shift
- Limited Trained Personnel
- Level of Training
- Gansbaai and Kleinmond limited shift system
- Limited Funding

Threats**Fires**

- Structural (Formal, Informal, Commercial, Industrial)
- Veld Fires

Motor vehicle/ pedestrian accidents

Boating accidents (Sea/ Lagoon)

Para-glider accidents

Hiking accidents

Drowning accidents (sea, lagoon, swimming pools, rivers)

Threat Drivers

Influx of visitors, tourists .

Weather (dry, windy, high temp), Topography (limited access) and Vegetation (age/density/type ect)

Extended Fire Season

Multiple incidents or Extended Fire Rescue and Disaster Incidents

6. SECTION F

6.1. Proactive activities 1 January 2021 – 31 August 2021

BURN PERMITS

Month	Kleinmond	Hermanus	Gansbaai	Stanford	
January	0	0	0	0	0
February	0	0	0	0	0
March	0	0	0	0	0
April	0	0	0	0	0
May	0	5	18	0	23
June	0	0	0	0	0
July	1	11	10	14	36
August	1	7	11	0	19
Total:	2	23	39	14	
Total Permits					78

FIRE RISK ASSESSMENT PLAN

Invasive Alien Plants are a serious problem which is rapidly spreading in Overstrand, impacting resident specie diversity and the ecosystem process. Without natural enemies, the invasive alien plants reproduce and spread, taking our valuable water and space from the indigenous plants. Thick alien vegetation also produce fuel loads for veldfires. There are 559 alien species listed as weeds and invaders and another 560 are listed as prohibited and may not be introduced into South Africa

Thorough risk assessments have been conducted at the following areas prior to the season with various role players such as Cape Nature, WOF, GoFPA and other internal departments:

1. Betty's Bay
2. Kleinmond (Arabella, Hangklip, Palmiet/ Dr Rasaki)
3. Afdakrivier
4. Fisherhaven
5. Sonesta
6. Hawston (new extension)
7. Municipal Farm
8. Fernkloof
9. De Kop
10. Le Bos
11. Veolia
12. Klipgat 1
13. Die Kouderievier/Nuwepos
14. Spookfontein
15. Preekstoel

PLOT CLEARING INSPECTIONS

Month		Kleinmond	Hermanus	Gansbaai	Stanford	
January	Inspections done	21	110	47	0	178
	Notices Issued	0	0	20	0	20
	Cleared by Contractor	0	0	0	0	0
	Cleared by Owner	0	0	3	0	3
February	Inspections done	70	36	119	0	225
	Notices Issued	0	0	44	0	44
	Cleared by Contractor	0	0	0	0	0
	Cleared by Owner	0	0	39	0	39
March	Inspections done	92	52	176	0	320
	Notices Issued	0	0	39	0	39
	Cleared by Contractor	0	0	4	0	4
	Cleared by Owner	0	0	35	0	35
April	Inspections done	52	56	58	0	166
	Notices Issued	0	0	40	0	40
	Cleared by Contractor	0	0	5	0	5
	Cleared by Owner	0	0	12	0	12
May	Inspections done	0	0	165	0	165
	Notices Issued	0	0	43	0	43
	Cleared by Contractor	0	0	4	0	4
	Cleared by Owner	0	0	46	0	46
June	Inspections done	46	41	81	0	168
	Notices Issued	79	0	24	0	103
	Cleared by Contractor	0	0	1	0	1
	Cleared by Owner	0	27	37	0	64
July	Inspections done	15	35	20	0	70
	Notices Issued	0	26	20	0	46
	Cleared by Contractor	0	0	0	0	0
	Cleared by Owner	24	42	68	0	134
August	Inspections done	20	24	52	203	299
	Notices Issued	0	0	19	0	19
	Cleared by Contractor	0	0	0	0	0
	Cleared by Owner	0	0	2	0	2
Total:		419	449	1223	203	
Total Permits			2294			

A34

FIRE SAFETY & AWARENESS ACTIVITIES

Month		Kleinmond	Hermanus	Gansbaai	Stanford	
January	Building Inspection	0	0	0	0	0
	Business Licenses	0	4	9	5	18
	Event Inspections	0	0	0	0	0
	Early Learning Inspections	0	0	0	0	0
	Population Certificates	0	1	0	0	1
	Fire Hydrant Inspections	0	5	0	0	5
	Flammable Storage	3	1	0	0	4
	Building Plan Screenings	0	5	5	0	10
	Town Planning Fire Safety Comments	1	8	3	1	13
	Fire Safety Compliance Certificates	1	1	0	0	2
February	Building Inspection	0	0	0	0	0
	Business Licenses	0	6	7	4	17
	Event Inspections	0	0	0	1	1
	Early Learning Inspections	0	1	0	1	2
	Population Certificates	0	0	0	1	1
	Fire Hydrant Inspections	0	0	0	0	0
	Flammable Storage	1	4	0	1	6
	Building Plan Screenings	3	12	11	0	26
	Town Planning Fire Safety Comments	1	8	1	1	11
	Fire Safety Compliance Certificates	0	1	1	0	2
March	Building Inspection	0	0	0	0	0
	Business Licenses	4	3	1	0	8
	Event Inspections	0	0	0	0	0
	Early Learning Inspections	0	8	0	1	9
	Population Certificates	0	2	0	0	2
	Fire Hydrant Inspections	24	31	0	0	55
	Flammable Storage	1	3	0	0	4
	Building Plan Screenings	6	7	1	0	14
	Town Planning Fire Safety Comments	4	5	2	3	14
	Fire Safety Compliance Certificates	1	1	4	0	6
April	Building Inspection	0	0	0	0	0
	Business Licenses	2	7	7	2	18
	Event Inspections	0	1	0	1	2
	Early Learning Inspections	0	2	0	0	2
	Population Certificates	0	0	0	0	0
	Fire Hydrant Inspections	0	4	0	0	4
	Flammable Storage	1	3	1	1	6
	Building Plan Screenings	2	3	0	0	5
	Town Planning Fire Safety Comments	1	11	2	0	14
	Fire Safety Compliance Certificates	0	3	1	0	4

May	Building Inspection	0	0	0	0	0
	Business Licenses	0	5	2	0	7
	Event Inspections	1	0	0	1	2
	Early Learning Inspections	0	1	1	0	2
	Population Certificates	1	0	1	0	2
	Fire Hydrant Inspections	50	78	46	0	174
	Flammable Storage	7	1	2	0	10
	Building Plan Screenings	9	32	17	0	58
	Town Planning Fire Safety Comments	5	19	5	1	30
	Fire Safety Compliance Certificates	0	4	0	0	4
June	Building Inspection	0	0	0	0	0
	Business Licenses	4	3	0	0	7
	Event Inspections	0	0	0	2	2
	Early Learning Inspections	2	2	0	0	4
	Population Certificates	0	0	0	0	0
	Fire Hydrant Inspections	0	0	0	0	0
	Flammable Storage	1	3	0	0	4
	Building Plan Screenings	29	42	47	0	118
	Town Planning Fire Safety Comments	2	15	5	2	24
	Fire Safety Compliance Certificates	0	3	1	0	4
July	Building Inspection	43	58	33	5	139
	Business Licenses	3	4	5	3	15
	Event Inspections	0	0	0	0	0
	Early Learning Inspections	0	1	0	1	2
	Population Certificates	0	0	0	0	0
	Fire Hydrant Inspections	0	0	0	0	0
	Flammable Storage	1	4	0	0	5
	Building Plan Screenings	0	0	0	0	0
	Town Planning Fire Safety Comments	2	13	2	0	17
	Fire Safety Compliance Certificates	0	1	1	0	2
August	Building Inspection	15	33	20	6	74
	Business Licenses	11	1	6	1	19
	Event Inspections	0	0	0	0	0
	Early Learning Inspections	0	1	0	0	1
	Population Certificates	0	0	0	0	0
	Fire Hydrant Inspections	346	321	41	0	708
	Flammable Storage	0	0	0	0	0
	Building Plan Screenings	0	0	0	0	0
	Town Planning Fire Safety Comments	3	15	5	0	23
	Fire Safety Compliance Certificates	0	1	0	1	2
Total:		591	812	296	46	
Total Permits			1745			

6.2. Strategic Policy

We are currently busy to amend our current Plot Clearing Policy to a Fire Hazards Policy, the object is to reduce the fire hazard on overgrown properties. The policy is currently in the stage before council approval.

6.3. Strategic Planning

We are working very closely with our environmental Dept. to identify Municipal properties, which will be prepared to conduct prescribe burns on the properties. The objective is to manage the veld age of the municipal properties. We hope to integrate this plan with private and state land soon. We hope to burn approximately 500ha before the end of June 2021 weather permitted. Pilot project with provincial Fire Brigade Services to compile a CAL- Fire response plan to Hemel-en-Aarde.

6.4. Greater Overberg Fire Protection Association

Constant and continue preventative planning with GOFPA and FMU leaders to reduce the risk of the outbreak and spread of wildfires. Various high trees have been identified with plans to mitigate the risks.

6.5. Overberg District Municipality and Disaster Management

Good cooperation between ODM and Overstrand have resulted in containment of cross border fires.

7. SECTION G

7.1. Overstrand Municipal Area Fire Risk Areas

Overstrand Municipal jurisdiction is geographically located within the fire-dependent fynbos biome. Alien infestation (such as Rooikrans, Port Jackson, Black wattle, etc.) Increases fire intensity together with limited firefighting capacity makes Overstrand Municipality highly vulnerable to veld fires. The following areas are regarded as our red zone areas.



7.2. Top Fire Risk Areas

Betty's Bay

- Dawidskraal area west towards Waterfalls (Blesberg)
- Blesberg (Brodie's Link / Sea Farm / Hangklip area)

Pringle Bay

- Urban interface (vacant plots and open spaces)

Kleinmond

- Heuningkloof toward Arabella (both sides of the R43)

Hermanus

- Mountain area Chanteclair (Leopard Rock via Glen Fruin towards Hermanus Adventure Centre along the Onrus Mountain towards Camphill (Peat Fire)
- Fernkloof Nature Reserve (3Damme towards Kleinrivier Mountain via Voggelgat) and Coastal area

Gansbaai

- Walkerbay Nature Reserve
- Grootbos / Platbos Flower Valley, Avuka and adjacent farms in the area

- Area between Stanford and Gansbaai (both sides of the R 43)
- Dangerpoint / Kleinbaai area
- De Damme towards Pearly Beach seaside

7.2.1. Hangklip / Kleinmond Area

Kleinmond is considered as a medium fire risk due to its sudden urban interface and limited firefighting capacity (limited vehicles and personnel)



Rooi Els

Rooi Els still considered as a medium, because of moderate fuel loads between residential structures and limited firefighting capacity as well as distance of Kleinmond Fire Station. Firefighting operations can quickly change from a house fire to a veld fire and vice versa and this under severe windy conditions could be devastating

Pringle Bay

A large part of Pringle Bay is considered a high risk this is due to limited firefighting capacity, high fuel loads between residential structures and distance of Kleinmond Fire Station.



Blesberg itself is considered as a major fire risk due to its high fuel load and density. Once again, a house fire to a veld fire and vice versa and this under severe windy conditions could be devastating

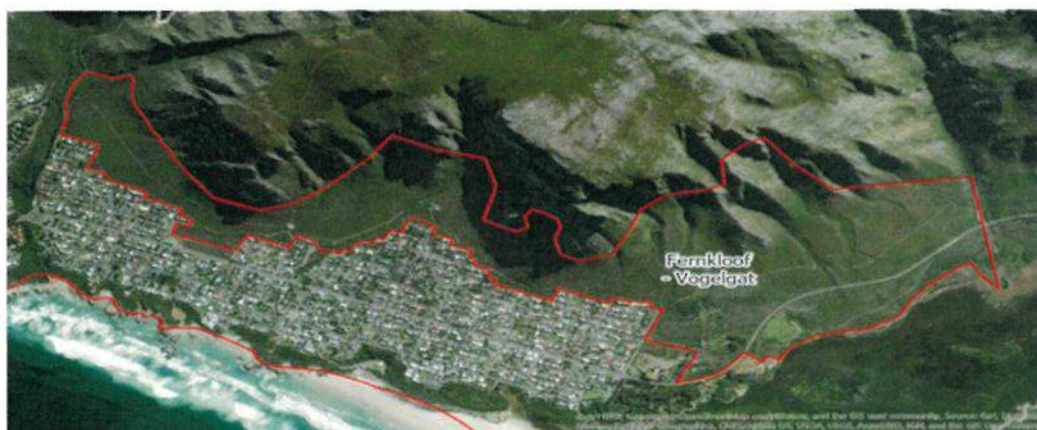
Betty's Bay

Betty's Bay as a town is extremely vulnerable to veld fires, due to high fuel loads between residential structures and little firefighting capacity, limited access to residential and distance from Kleinmond Fire Station. Again, a house fire can escalate to a veld fire and vice versa and under severe windy conditions with disastrous consequences.

**7.2.2. Fisherhaven – Hermanus**

The following areas are considered as high fire risk:

- Area around the Meerenbosch (Fisherhaven)
- Area between Hawston and Vermont
- Area from Mountain Rose Farm towards Spookfontein
- Area around Habonim and Curro School

**7.2.3. Stanford / Gansbaai Area**

- Platbos area
- Salmonsdam Nature Reserve

- Flower Valley area
- Grootbos area



- County Fair Chicken Farm area
- Wortelgat / Walkerbay area
- Kleinrivier Mountain area
- Die Damme Reserve

Stanford / Gansbaai area is experiencing rapid alien infestation, causing increases in fuel load which forms a conduit for fires and sustained / rapid fire spread.



8. SECTION H

8.1. Prevention, control and management of Covid-19 during incidents

8.1.1. Social distancing measures

Each employer/ee must arrange the workplace to ensure minimal contact between workers, and as far as practically possible, ensure that there is a minimum of 1,5m between workers while they are working, depending on the circumstances of the workplace, work environment or the nature of the sector.

Every employer must ensure that social distancing measures are implanted through supervision, both in the workplace and common place areas

8.1.2. Screening

Every employer must take measures to screen workers when they report for work to:

- Ascertain whether they have any of the symptoms associated with Covid-19
- Determine whether they suffer from the following symptoms:
 - Fever
 - Body aches
 - Redness of the eyes
 - Nausea
 - Vomiting
 - Diarrhoea
 - Fatigue, weakness or tiredness
 - **Employees who show any of the above symptoms must immediately inform his or her supervisor**
- Employers must comply with any guidelines issued by the National Department on the following:
 - Prescribed PPE (where applicable)
 - Sanitizer
 - Disinfectants
 - Hand-washing

9. SECTION I

9.1. Emergency Contact Numbers

FIRE, RESCUE AND DISASTER MANAGEMENT		
Overstrand General Control Room		028 313 8111
Protection Services Emergency Control Room		028 312 2400
<u>Name /Surname</u>	<u>Short number</u>	<u>Cell number</u>
FIRE SERVICES		
Lester Smith	6805	082 978 9493
Brian Lobb	6380	082 338 0983
Enrico Solomon	6035	076 011 5052
Yulanda Scholtz	6344	082 675 7219
Angelo Aplon	6048	079 507 7297
Dawie Esau	6234	072 575 3965
Ryan Stewart	6594	072 452 1105
Ebriam Isaacs	6319	079 139 3867
Gallie Badenhorst	6358	072 142 4488
Adam Mars	6527	071 021 6217
Sarolyn Coert	6518	081 839 0154
Joan Pillay	6516	071 683 6415
Meagan Carelse	6517	061 4266 564
DISTRICT FIRE SERVICES		
CFO R. Geldenhuys		083 273 8234
PROVINCIAL FIRE AND DISASTER MANAGEMENT		
Ettienne du Toit		021 937 6357 / 073 995 1609
GREATER OVERBERG FPA		
Louise Wessels		083 327 0477
TRAFFIC AND LEO		
Rudi Frazer	6278	082 449 6751
Xen Titus	6169	082 596 6270
Andre Lucas	6211	079 577 7572
Johan du Toit	6349	076 970 5481

OVERSTRAND ENVIRONMENTAL SERVICES		
Liezl de Villiers	6485	082 735 8910
SAPS		
Hermanus		028 313 5300
Kleinmond		028 271 8200
Gansbaai		028 384 0201
BETT'S BAY		
Jorika Rabie		072 616 8418
Liz Cartwright		074 141 7600
Betty's Bay Rate Payers Association		082 808 1564 (Bill Steyn)
Betty's Bay Neighbourhood Watch		072 015 5729
PRINGLE BAY		
Clayton Francis		072 128 9788
PEARLY BEACH		
Chris Jason van der Nest		061 353 4645